

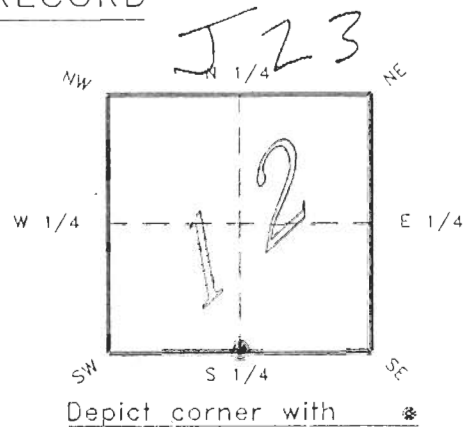
4023J23

DOC. # 0047001

FLORIDA DEPARTMENT OF NATURAL RESOURCES
CERTIFIED CORNER RECORD

CORNER DESCRIPTION:

S 1/4 corner of Section 12,
Twp 40 S., Rge 23 E.,
Tallahassee Base Meridian,
CHARLOTTE County(s), Florida.



MONUMENTATION DESCRIPTION:

Describe original monument and accessories, or subsequent restoration. Give sources of information. (If no attempt was made to search for the original monument and accessories, this information is not necessary.)

Description of corner evidence found:

CONCRETE MONUMENT WITH TOP BROKEN, REPLACED WITH CONCRETE MONUMENT.

State method(s) to determine corner location (lost corners only):

HORIZONTAL POSITION INFORMATION (if determined):

Latitude 27°00'22.00708"N Longitude 81°58'01.15965"W
Y(Northing) 296081.791 m X(Easting) 203276.154 m Zone FLW
Convergence 0°00'53.964" Scale factor 0.99994131

Coordinate determination (circle one): Field traverse GPS
Horizontal datum (circle one): NAD27 NAD83(1986) NAD83(1990) other (explain)

Order of accuracy as defined in "Standards and Specifications for Geodetic Control Networks" published by the Federal Geodetic Control Committee (circle one):
1st, 2nd, 3rd, class 1

or Minimum Technical Standards (Chapter 21HH-6, F.A.C.) ratio of closure for field data (example 1:10,000), _____ . This does not specify an order of accuracy.

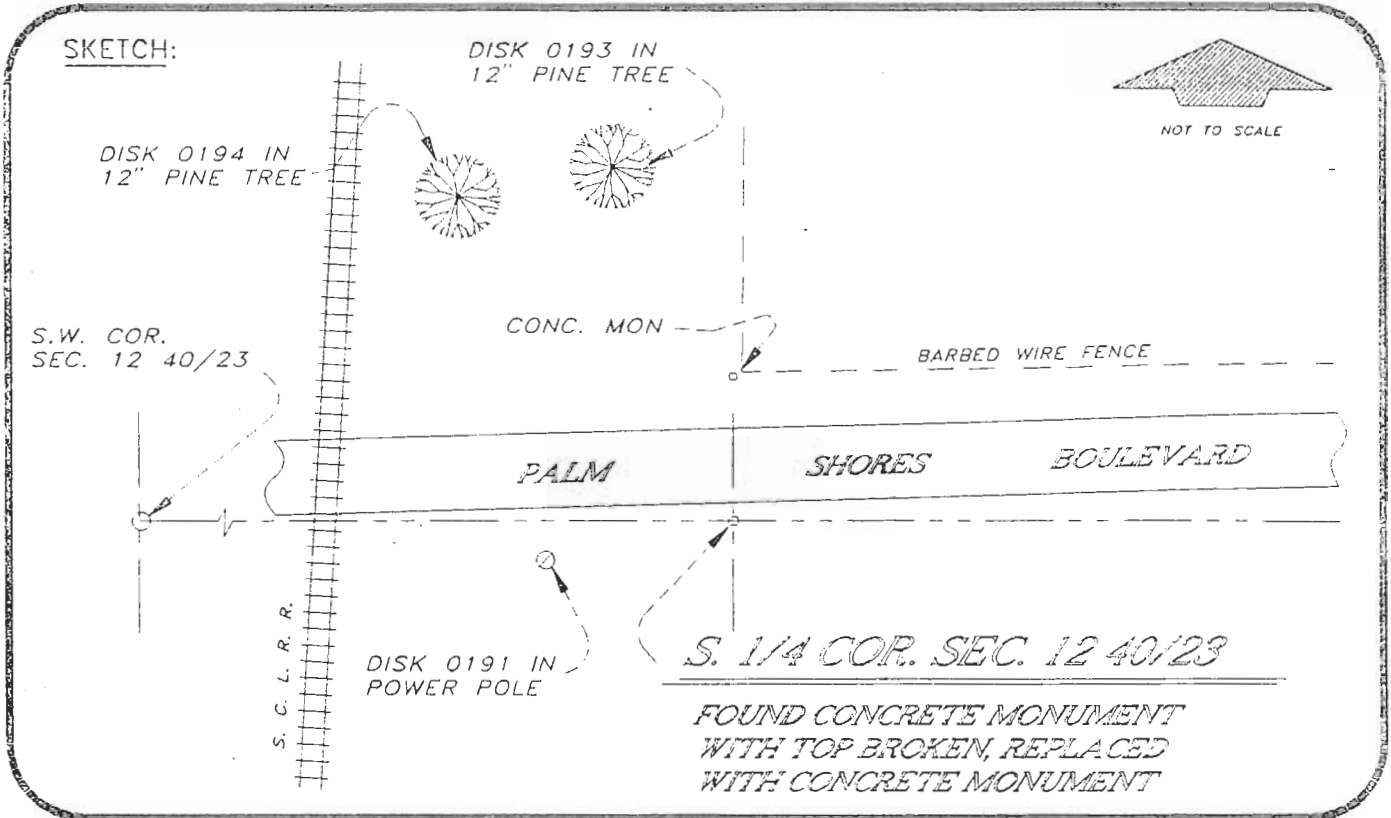
Control point(s) used for survey:

Comments:

0047001

4023J23

DOC. #



BASIS OF BEARING SOLAR OBSERVATION

REFER FB 301/27

All bearings and distances must be from the corner to the witness. Indicate whether corner was found, set, or replaced and show north arrow.

SET SURVEY MARKER POST 2.0' S'LY

REFERENCE MEASUREMENTS (at least three vicinity references must be given below even if they appear on the above sketch):

Description	Bearing	Distance
DISK 0191 IN POWER POLE	S 74°45'30" W	117.86'
DISK 0193 IN 12" PINE TREE	N 17°35'15" W	186.59'
DISK 0194 IN 12" PINE TREE	N 48°05'25" W	175.79'
CONC. MON. AT FENCE COR.	N 00°17'35" W	47.20'

SURVEYORS CERTIFICATE: I certify the monument and accessories indicated above were field located on JUNE 18, 19 93.

[Signature] PLS 4260

SIGNATURE

11-16-93

DATE

CHARLOTTE COUNTY SURVEY DEPT.

FIRM OR AGENCY

7000 FLORIDA STREET

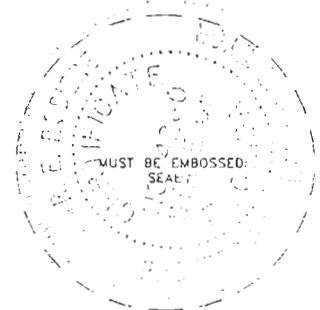
ADDRESS

PUNTA GORDA, FLA. 33950

CITY

STATE

546



SEND TO:

Department of Natural Resources
Bureau of Survey and Mapping
3900 Commonwealth Boulevard
Mail Station 105
Tallahassee, Florida 32399

DNR 53-001(16)
REV. 7/16/92
PAGE 2 OF 2

Completeness checked by: *B. Britton*

Accepted and filed: 12-1-93

B.L.M. - I.D. 13CL0012 Date

D.N.R. USE ONLY