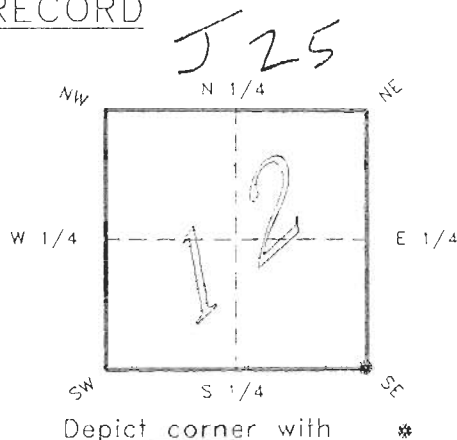


4023J25

FLORIDA DEPARTMENT OF ENVIRONMENTAL PROTECTION
CERTIFIED CORNER RECORD

CORNER DESCRIPTION:

S.E. corner of Section 12 ,
Twp 40 S. , Rge 23 E. ,
Tallahassee Base Meridian,
CHARLOTTE County(s), Florida.



MONUMENTATION DESCRIPTION:

Describe original monument and accessories, or subsequent restoration. Give sources of information. (If no attempt was made to search for the original monument and accessories, this information is not necessary.)

Description of corner evidence found:

PK NAIL AND DISK DMK "PCP"

State method(s) to determine corner location (lost corners only):

HORIZONTAL POSITION INFORMATION (if determined):

Latitude 27°00'21.28386"N Longitude 81°57'32.08131"W
Y(Northing) 296059.768 m X(Easting) 204077.784 m Zone FLW
Convergence 0°01'07.167" Scale factor 0.99994138

Coordinate determination (circle one):

Field traverse

GPS

Horizontal datum (circle one): NAD27 NAD83(1986) NAD83(1990) other (explain)

Order of accuracy as defined in "Standards and Specifications for Geodetic Control Networks" published by the Federal Geodetic Control Committee (circle one):
1st, 2nd, 3rd, class 1 ,

or Minimum Technical Standards (Chapter 21HH-6, F.A.C.) ratio of closure for field data (example 1:10,000), _____ . This does not specify an order of accuracy.

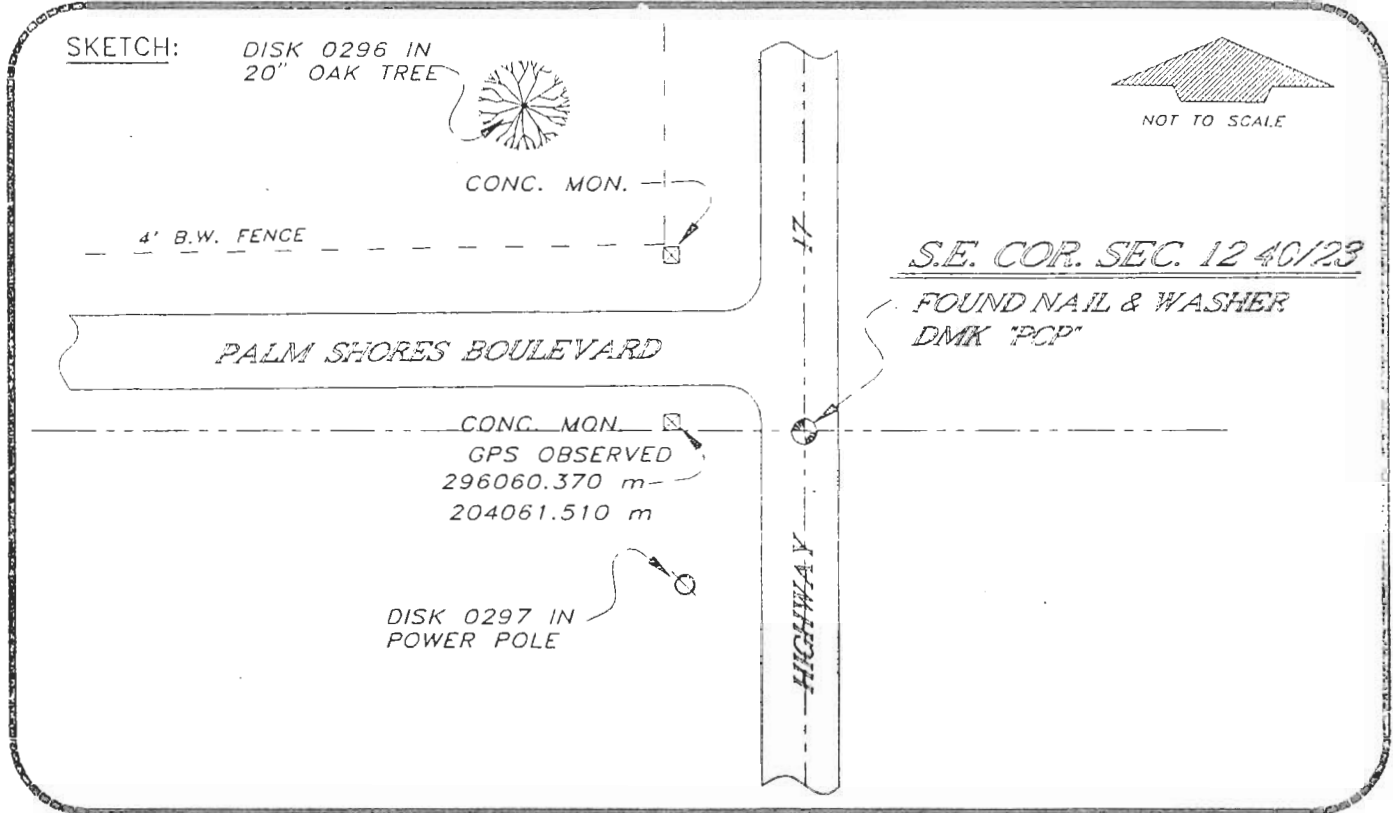
Control point(s) used for survey: *CHARLOTTE COUNTY HORIZONTAL CONTROL NETWORK INCLUDES HAYOLINE 2, PLACIDA 2, W260, PUNTAPOINT, & FLGPS 58 AS B ORDER STATIONS.*

Comments:

0047005

4023J25

DOC. #



BASIS OF BEARING GPS OBSERVATION REFER FB 301/28
 REFER: FDOT ROW MAP SEC. NO. 0104-106 SHEET 1

REFERENCE MEASUREMENTS

Description	Bearing	Distance
DISK 0296 IN 20" OAK TREE	N 42°22'13" W	184.98'
CONCRETE MONUMENT	N 43°34'03" W	77.14'
DISK 0297 IN POWER POLE	S 63°58'55" W	71.89'
CONCRETE MONUMENT	N 87°51'43" W	53.43'
	(N 87°52'50" W GRID)	

SURVEYORS CERTIFICATE: I certify the monument and accessories indicated above
 were field located on OCTOBER 5, 19 93.

[Signature]
 SIGNATURE PLS 4260

11-16-93
 DATE

CHARLOTTE COUNTY SURVEY DEPT.
 FIRM OR AGENCY

7000 FLORIDA STREET
 ADDRESS

PUNTA GORDA, FLA. 33950
 CITY STATE

546



Completeness checked by: *[Signature]*
 Accepted and filed: 12-1-93 Date
 B.L.M. - I.D. 13120718 D.N.R. USE ONLY

SEND TO:
 Department of Environmental Protection
 Bureau of Survey and Mapping
 3900 Commonwealth Boulevard
 Mail Station 105
 Tallahassee, Florida 32399