

4023L13

DOC. #

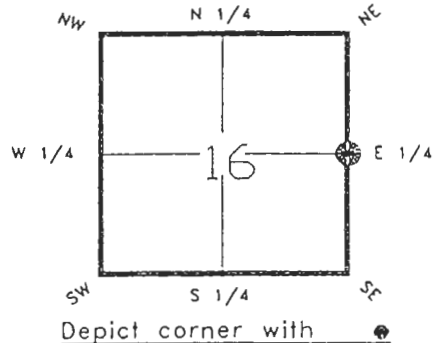
~~0045955~~

FLORIDA DEPARTMENT OF NATURAL RESOURCES
CERTIFIED CORNER RECORD

L-13

CORNER DESCRIPTION:

E. 1/4 corner of Section 16 ,
Twp 40 SOUTH , Rge 23 EAST ,
Tallahassee Base Meridian,
CHARLOTTE County(s), Florida.



MONUMENTATION DESCRIPTION:

Describe original monument and accessories, or subsequent restoration. Give sources of information. (If no attempt was made to search for the original monument and accessories, this information is not necessary.)
NONE FOUND

Description of corner evidence found:

IRON ROD BENT 0.6' BELOW SURFACE AND NAIL ON SURFACE
SET CHARLOTTE COUNTY CONCRETE MONUMENT

State method(s) to determine corner location (lost corners only):

RECEIVED

JUL 26 1993

SURVEY & MAPPING

HORIZONTAL POSITION INFORMATION (if determined):

Latitude 26°59'43.57039"N Longitude 82°00'29.81163"W
Y(Northing) 294898.425 X(Easting) 199178.085 Zone FL W
Convergence -0°00'13.532" Scale factor 0.99994118

Coordinate determination (circle one): Field traverse GPS

Horizontal datum (circle one): NAD27 NAD83(1986) NAD83(1990) other (explain)

Order of accuracy as defined in "Standards and Specifications for Geodetic Control Networks" published by the Federal Geodetic Control Committee (circle one):

1st, 2nd, 3rd, class 1 ,

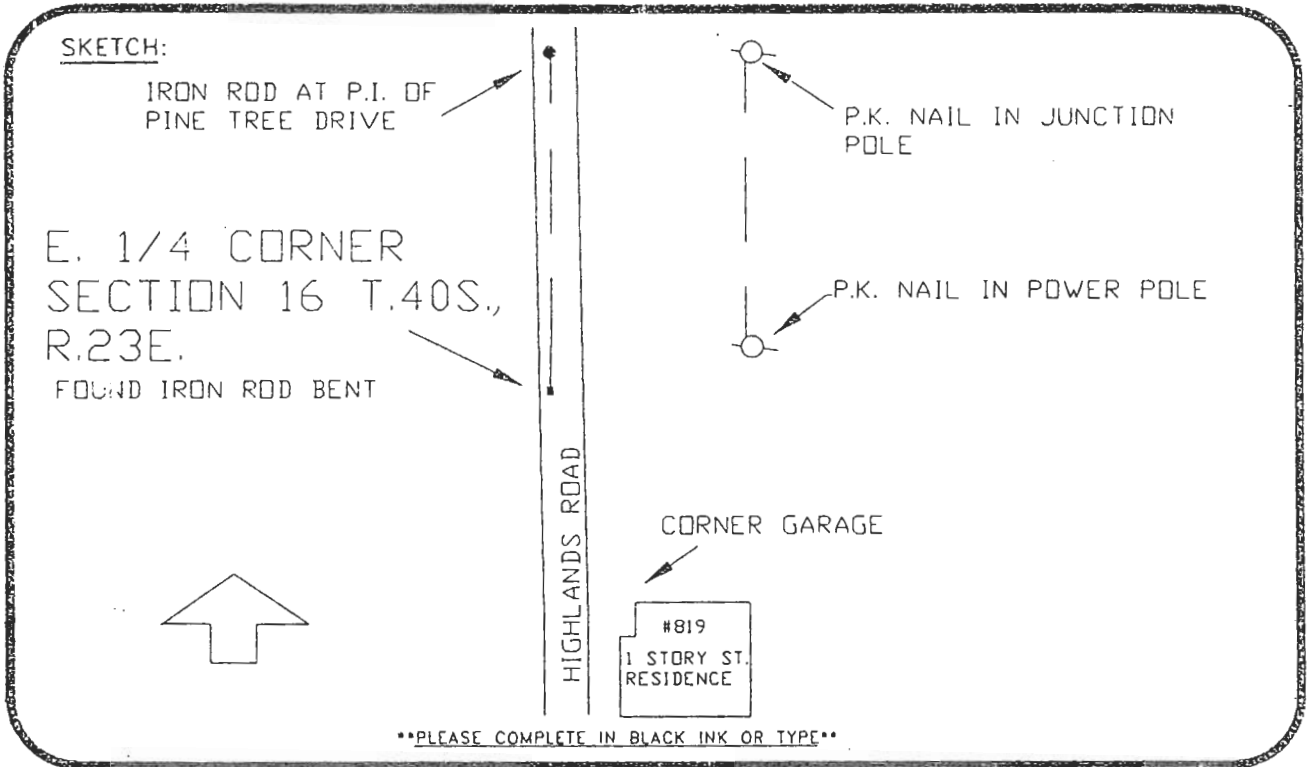
or Minimum Technical Standards (Chapter 21HH-6, F.A.C.) ratio of closure for field data (example 1:10,000), _____ . This does not specify an order of accuracy.

Control point(s) used for survey:

Comments:

0045955

DOC. #



REFER: F.B. 251-13 BASIS OF BEARING ASSUMED DATUM
 All bearings and distances must be from the corner to the witness. Indicate whether corner was found, set, or replaced and show north arrow.

REFERENCE MEASUREMENTS (at least three vicinity references must be given below even if they appear on the above sketch):

Description	Bearing	Distance
IRON ROD AT P.I. PINE TREE DR.	N.00°54'24"E.	2295.51'
P.K. NAIL IN JUNCTION POWER POLE	N.31°02'42"E.	319.00'
P.K. NAIL IN POWER POLE	N.76°42'26"E.	165.00'
N.W. CORNER GARAGE	S.21°32'23"E.	183.00'

SURVEYORS CERTIFICATE: I certify the monument and accessories indicated above were field located on FEBRUARY 19, 1991.

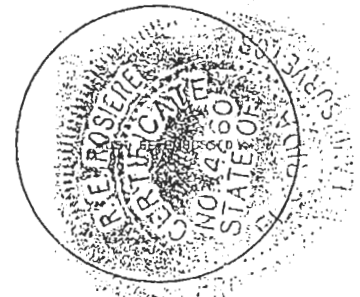
[Signature] PLS 4260
 SIGNATURE

7-12-93
 DATE

CHARLOTTE COUNTY SURVEY DEPT.
 FIRM OR AGENCY

7000 FLORIDA STREET
 ADDRESS

PUNTA GORDA, FLA. 33950
 CITY STATE



SEND TO:

Department of Natural Resources
 Bureau of Survey and Mapping
 3900 Commonwealth Boulevard
 Mail Station 105
 Tallahassee, Florida 32399

DNR 53-001(16)
 REV. 7/16/92
 PAGE 2 OF 2

Completeness checked by: GR Green
 Accepted and filed: 8-93
 B.L.M. - I.D. 1600CL15 Date
 D.N.R. USE ONLY