

4023L25

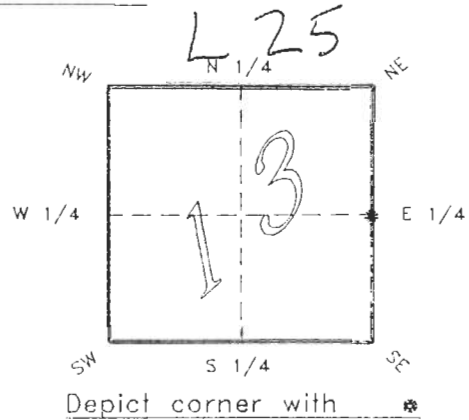
DOC. #

0047004

FLORIDA DEPARTMENT OF ENVIRONMENTAL PROTECTION
CERTIFIED CORNER RECORD

CORNER DESCRIPTION:

E. 1/4 corner of Section 13 ,
Twp 40 S. , Rge 23 E. ,
Tallahassee Base Meridian,
CHARLOTTE County(s), Florida.



MONUMENTATION DESCRIPTION:

Describe original monument and accessories, or subsequent restoration. Give sources of information. (If no attempt was made to search for the original monument and accessories, this information is not necessary.)

Description of corner evidence found:

NAIL 4.1' EAST OF CENTER HIGHWAY 17

State method(s) to determine corner location (lost corners only):

HORIZONTAL POSITION INFORMATION (if determined):

Latitude 26°59'55.11578"N Longitude 81°57'32.29649"W
Y(Northing) 295254.392 m X(Easting) 204072.114 m Zone FLW
Convergence 0°01'07.053" Scale factor 0.99994138

Coordinate determination (circle one): Field traverse GPS

Horizontal datum (circle one): NAD27 NAD83(1986) NAD83(1990) other (explain)

Order of accuracy as defined in "Standards and Specifications for Geodetic Control Networks" published by the Federal Geodetic Control Committee (circle one):
1st, 2nd, 3rd, class 1 ,

or Minimum Technical Standards (Chapter 21HH-6, F.A.C.) ratio of closure for field data (example 1:10,000), _____ . This does not specify an order of accuracy.

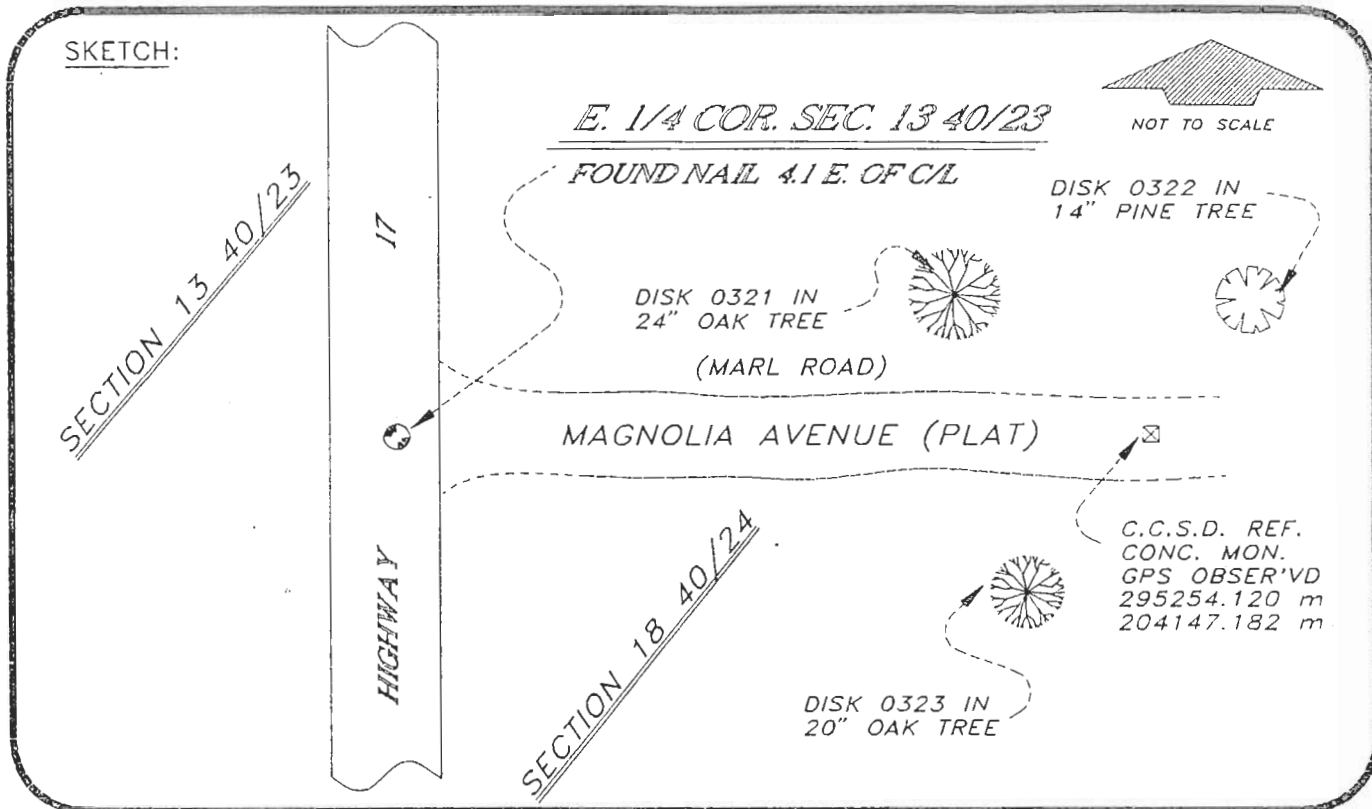
Control point(s) used for survey: *CHARLOTTE COUNTY HORIZONTAL CONTROL NETWORK INCLUDES HAVOLINE 2, PLACIDA 2, W260, PUNTAPORT, & FLGPS 58 AS B ORDER STATIONS.*

Comments:

0047004

4023L25

DOC. #



BASIS OF BEARING SOLAR OBSERVATION

REFER: FB 301/38

SET SURVEY MARKER POST 6' N'LY OF REF. MON.

REFERENCE MEASUREMENTS

| Description | Bearing | Distance |
|-----------------------|------------------------|----------|
| DISK 0321 IN 24" OAK | N 63°11'11" E | 205.55' |
| DISK 0322 IN 14" PINE | N 84°51'26" E | 294.73' |
| DISK 0323 IN 20" OAK | S 75°17'57" E | 269.49' |
| C.C.S.D. REF. MON. | S 89°46'26" E | 246.30' |
| | (S 89°47'34" W GRID) | |

SURVEYORS CERTIFICATE: I certify the monument and accessories indicated above were field located on OCTOBER 19, 19 93.

R. Rose

PLS 4260

SIGNATURE

11-16-93

DATE

CHARLOTTE COUNTY SURVEY DEPT.

FIRM OR AGENCY

7000 FLORIDA STREET

ADDRESS

PUNTA GORDA,

FLA.

33950

CITY

STATE

508



SEND TO:

Department of Environmental Protection
Bureau of Survey and Mapping
3900 Commonwealth Boulevard
Mail Station 105
Tallahassee, Florida 32399

Completeness checked by: B. Hinton

Accepted and filed: 12-1-93 Date

B.L.M. - I.D. 1300CL18 D.N.R. USE ONLY