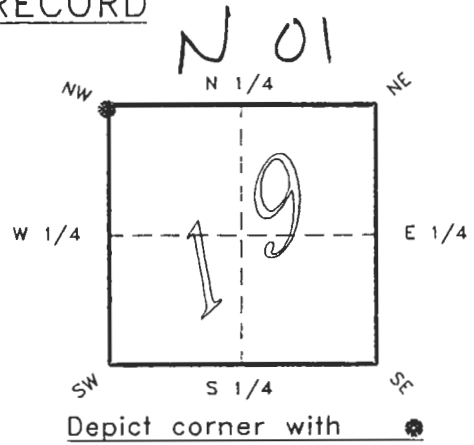


4023N01

FLORIDA DEPARTMENT OF ENVIRONMENTAL PROTECTION
CERTIFIED CORNER RECORD

CORNER DESCRIPTION:

N.W. corner of Section 19 ,
Twp 40 S. , Rge 23 E. ,
Tallahassee Base Meridian,
CHARLOTTE County(s), Florida.



MONUMENTATION DESCRIPTION:

Describe original monument and accessories, or subsequent restoration. Give sources of information. (If no attempt was made to search for the original monument and accessories, this information is not necessary.)

Description of corner evidence found:

CONCRETE MONUMENT

State method(s) to determine corner location (lost corners only):

HORIZONTAL POSITION INFORMATION (if determined):

Latitude 26°59'17.36458" N Longitude 82°03'27.69129" W

Y(Northing) 294093.173 m X(Easting) 194273.521 m Zone FLW

Convergence -0°01'34.252" Scale factor 0.99994158

Coordinate determination (circle one): Field traverse GPS

Horizontal datum (circle one): NAD27 NAD83(1986) NAD83(1990) other (explain)

Order of accuracy as defined in "Standards and Specifications for Geodetic Control Networks" published by the Federal Geodetic Control Committee (circle one):
1st, 2nd, 3rd, class 1 ,

or Minimum Technical Standards (Chapter 21HH-6, F.A.C.) ratio of closure for field data (example 1:10,000), _____ . This does not specify an order of accuracy.

Control point(s) used for survey: *CHARLOTTE COUNTY HORIZONTAL CONTROL NETWORK INCLUDES HAVOLINE 2, PLACIDA 2, W260, PUNTPORT, & FLGPS 5B AS B ORDER STATIONS.*

MAR 4 1994

Comments:

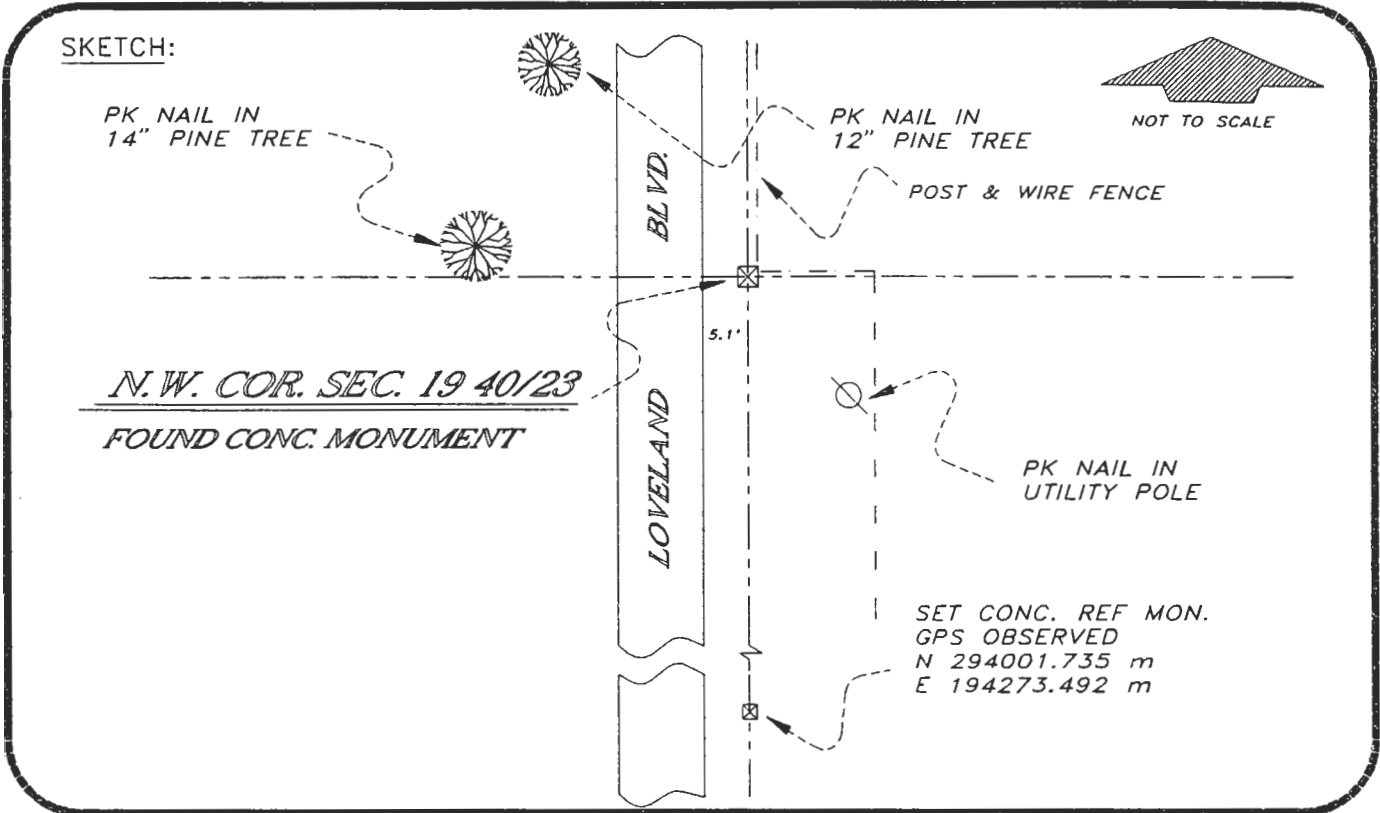
REPLACES C.C.R. DOC. # 0045957

SURVEY & MAPPING

0048021

4023N01

DOC. #



BASIS OF BEARING SOLAR OBSERVATION
SET SURVEY MARKER POST SE"LY 3.2'

REFER: FB 255/40

REFERENCE MEASUREMENTS

Description	Bearing	Distance
PK NAIL IN 12" PINE TREE	N 39°55'41" W	58.03'
PK NAIL IN 14" PINE TREE	N 84°46'31" W	51.33'
PK NAIL IN UTILITY POLE	S 33°58'14" E	23.96'
CONC. REF. MONUMENT	S 00°00'30" E (S 00°01'05" W GRID)	300.01'

SURVEYORS CERTIFICATE: I certify the monument and accessories indicated above were field located on APRIL 16, 1991.

R. P. Rose
SIGNATURE

PLS 4260

3-1-94
DATE

CHARLOTTE COUNTY SURVEY DEPT.

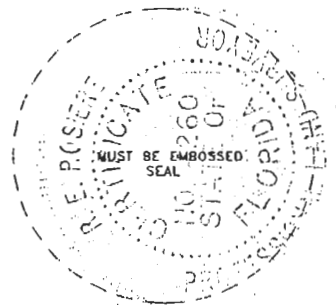
FIRM OR AGENCY

7000 FLORIDA STREET

ADDRESS

PUNTA GORDA, FLA. 33950
CITY STATE

509



SEND TO:

Department of Environmental Protection
Bureau of Survey and Mapping
3900 Commonwealth Boulevard
Mail Station 105
Tallahassee, Florida 32399

Completeness checked by: *B. Linton*
Accepted and filed: 4-1-94 Date
B.L.M. - I.D. 24131819 D.N.R. USE ONLY