

4023N20

FLORIDA DEPARTMENT OF NATURAL RESOURCES  
CERTIFIED CORNER RECORD

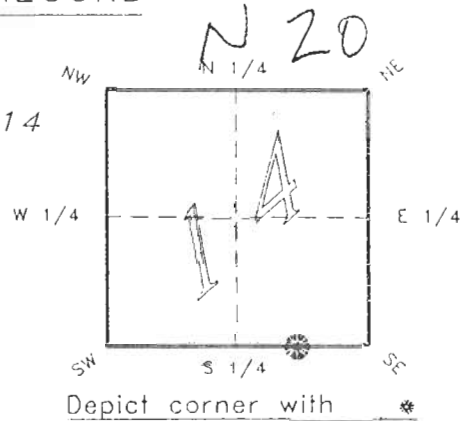
CORNER DESCRIPTION:

S.W. COR. OF S.E. 1/4, S.E. 1/4 SEC. 14

Twp 40 S., Rge 23 E.

Tallahassee Base Meridian,

CHARLOTTE County(s), Florida.



MONUMENTATION DESCRIPTION:

Describe original monument and accessories, or subsequent restoration. Give sources of information. (If no attempt was made to search for the original monument and accessories, this information is not necessary.)

Description of corner evidence found:

CONCRETE MONUMENT

State method(s) to determine corner location (lost corners only):

HORIZONTAL POSITION INFORMATION ( if determined ):

Latitude 26°59'31.04633"N Longitude 81°58'44.96801"W

Y(Northing) 294513.117 m X(Easting) 202068.718 m Zone FLW

Convergence 0°00'34.054" Scale factor 0.99994123

Coordinate determination (circle one): Field traverse  GPS

Horizontal datum (circle one): NAD27 NAD83(1986)  NAD83(1990) other (explain)

Order of accuracy as defined in "Standards and Specifications for Geodetic Control Networks" published by the Federal Geodetic Control Committee (circle one): 1st,  2nd,  3rd, class \_\_\_\_\_

or Minimum Technical Standards (Chapter 21HH-6, F.A.C.) ratio of closure for field data (example 1:10,000), \_\_\_\_\_. This does not specify an order of accuracy.

Control point(s) used for survey: CHARLOTTE COUNTY HORIZONTAL CONTROL NETWORK INCLUDES HAVOLINE 2, PLACIDA 2, W260, PUNTAPOINT, & FLGPS 58 AS B ORDER STATIONS.

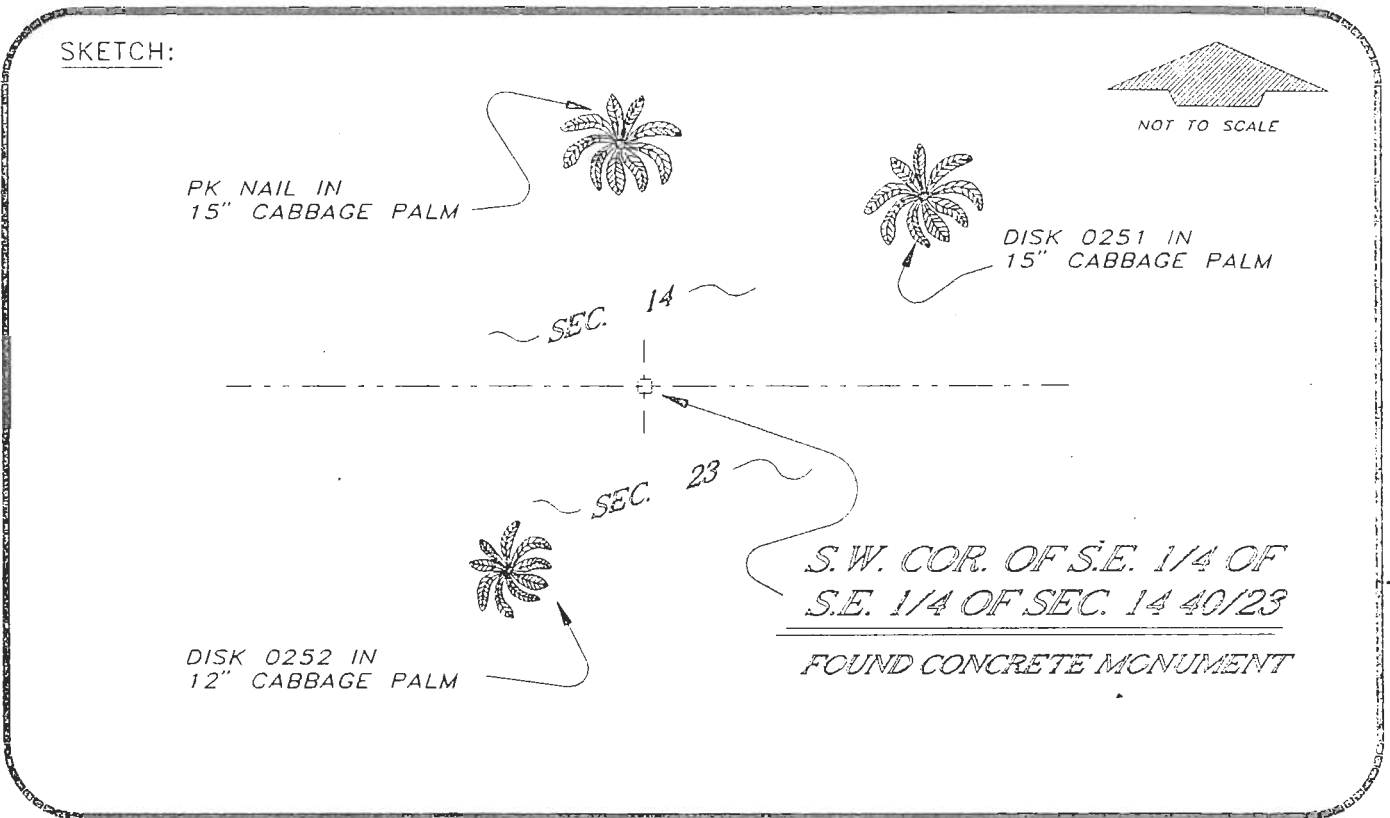
Comments:

4023N20

DOC. #

0047007

SKETCH:



*BASIS OF BEARING SOLAR OBSERVATION*      *REFER FB 251/73*  
 All bearings and distances must be from the corner to the witness. Indicate whether corner was found, set, or replaced and show north arrow.

REFERENCE MEASUREMENTS ( at least three vicinity references must be given below even if they appear on the above sketch ):

Description	Bearing	Distance
DISK 0251 IN 15" PALM	N 64°00'07" E	30.01'
DISK 0252 IN 12" PALM	S 40°57'39" W	25.39'
PK NAIL IN 15" PALM	N 03°56'26" W	23.56'

SURVEYORS CERTIFICATE: I certify the monument and accessories indicated above were field located on MARCH 11, 19 93.

[Signature] PLS 4260  
 SIGNATURE

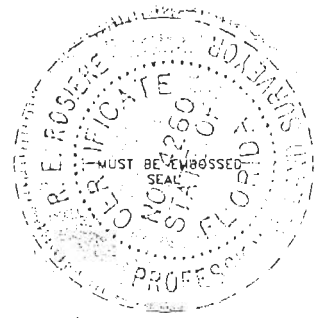
11-16-93  
 DATE

CHARLOTTE COUNTY SURVEY DEPT.  
 FIRM OR AGENCY

7000 FLORIDA STREET  
 ADDRESS

PUNTA GORDA, FLA. 33950  
 CITY STATE

508



Completeness checked by: B. Linton  
 Accepted and filed: 12-1-93 Date  
 B.L.M. - I.D. 28E00014 D.N.R. USE ONLY

SEND TO:  
 Department of Natural Resources  
 Bureau of Survey and Mapping  
 3900 Commonwealth Boulevard  
 Mail Station 105  
 Tallahassee, Florida 32399  
 DNR 53-001(16)  
 REV. 7/16/92  
 PAGE 2 OF 2