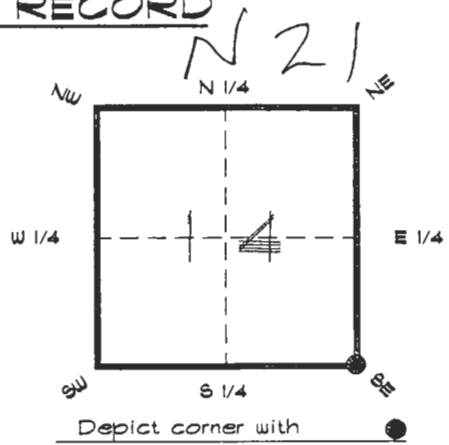


4023N21

**FLORIDA DEPARTMENT OF ENVIRONMENTAL PROTECTION  
CERTIFIED CORNER RECORD**

CORNER DESCRIPTION:

S. E. corner of Section 14 ,  
Twp 40 S. , Rge 23 E. ,  
Tallahassee Base Meridian,  
CHARLOTTE County(s), Florida.



MONUMENTATION DESCRIPTION:

Describe original monument and accessories, or subsequent restoration. Give sources of information. (If no attempt was made to search for the original monument and accessories, this information is not necessary.)

Description of corner evidence found:

*CONCRETE MONUMENT, TAPERED WITH SECTIONS LABELED IN SIDES. SET BY A. DUFFIE IN 1926 REFER TO FLAT BOOK 2 PAGE 35 C.C.P.R.*

State method(s) to determine corner location (lost corners only):

HORIZONTAL POSITION INFORMATION ( if determined ):

Latitude 26°59'30.58738" N Longitude 81°58'30.28963" W

Y(Northing) 294499.066 m X(Easting) 202473.420 m Zone FLW

Convergence 0°00'40.716" Scale factor 0.99994125

Coordinate determination (circle one): Field traverse  **GPS**

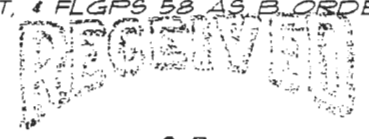
Horizontal datum (circle one): NAD27 NAD83(1986) **NAD83(1990)** other (explain)

Order of accuracy as defined in Standards and Specifications for Geodetic Control Networks published by the Federal Geodetic Control Committee (circle one): 1st, **2nd**, 3rd, class

or Minimum Technical Standards (Chapter 6IG17, F.A.C.) ratio of closure for field data (example 1:10,000), \_\_\_\_\_ . This does not specify an order of accuracy.

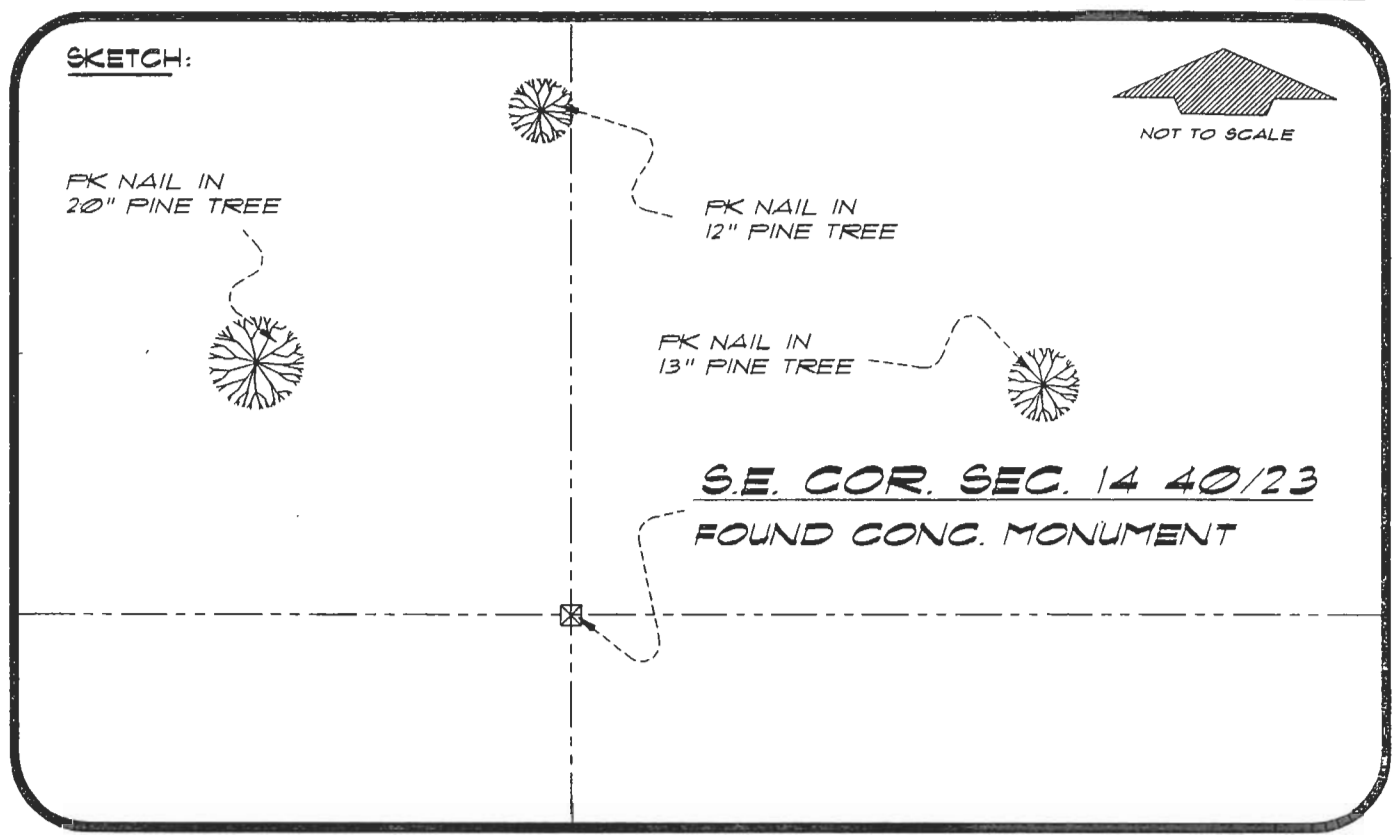
Control point(s) used for survey: *CHARLOTTE COUNTY HORIZONTAL CONTROL NETWORK INCLUDES HAYOLINE 2, PLACIDA 2, W260, PUNTPORT, & FLGPS 58 AS BORDER STATIONS.*

Comments:



MAR 23 1994

SURVEY & MAPPING



BASIS OF BEARING ASSUMED DATUM REFER: FB 251/18

SET SURVEY MARKER POST 2.8' E"LY

REFERENCE MEASUREMENTS

Description	Bearing	Distance
FK NAIL IN 12" PINE TREE	N 02°16'41" W	224.51'
FK NAIL IN 20" PINE TREE	N 48°53'31" W	156.69'
FK NAIL IN 13" PINE TREE	N 69°29'34" E	181.10'

SURVEYORS CERTIFICATE: I certify the monument and accessories indicated above were field located on FEBRUARY 7, 1991

R. P. Ross FLS 4260  
SIGNATURE

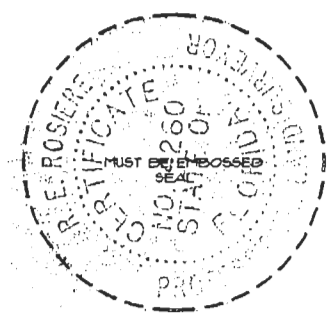
3-17-94  
DATE

CHARLOTTE COUNTY SURVEY DEPT.  
FIRM OR AGENCY

1000 FLORIDA STREET  
ADDRESS

PUNTA GORDA, FLORIDA 33950  
CITY STATE

508



**SEND TO:**

Department of Environmental Protection  
Bureau of Survey and Mapping  
3900 Commonwealth Boulevard  
Mail Station 105  
Tallahassee, Florida 32399

Completeness checked by: P. J. Juntor

Accepted and filed: 4-1-94 Date

BLM. - ID. 23141324 D.N.R. USE ONLY