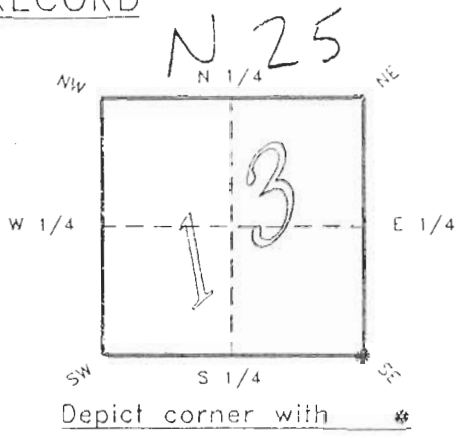


4023N25

FLORIDA DEPARTMENT OF ENVIRONMENTAL PROTECTION
CERTIFIED CORNER RECORD

CORNER DESCRIPTION:

S.E. corner of Section 13 ,
Twp 40 S. , Rge 23 E. ,
Tallahassee Base Meridian,
CHARLOTTE County(s), Florida.



MONUMENTATION DESCRIPTION:

Describe original monument and accessories, or subsequent restoration. Give sources of information. (If no attempt was made to search for the original monument and accessories, this information is not necessary.)

Description of corner evidence found:
CONCRETE MONUMENT DMK LB 3943 "PRM"

State method(s) to determine corner location (lost corners only):

HORIZONTAL POSITION INFORMATION (if determined):

Latitude 26°59'28.90293"N Longitude 81°57'32.36202"W
Y(Northing) 294447.641 m X(Easting) 204070.569 m Zone FLW
Convergence 0°01'07.006" Scale factor 0.99994138

Coordinate determination (circle one): Field traverse GPS
Horizontal datum (circle one): NAD27 NAD83(1986) NAD83(1990) other (explain)

Order of accuracy as defined in "Standards and Specifications for Geodetic Control Networks" published by the Federal Geodetic Control Committee (circle one):
1st, 2nd, 3rd, class 1 ,
or Minimum Technical Standards (Chapter 21HH-6, F.A.C.) ratio of closure for field data (example 1:10,000), _____ . This does not specify an order of accuracy.

Control point(s) used for survey: *CHARLOTTE COUNTY HORIZONTAL CONTROL NETWORK INCLUDES HAVOLINE 2, PLACIDA 2, W260, PUNTAPORT, & FLGPS 58 AS B ORDER STATIONS.*

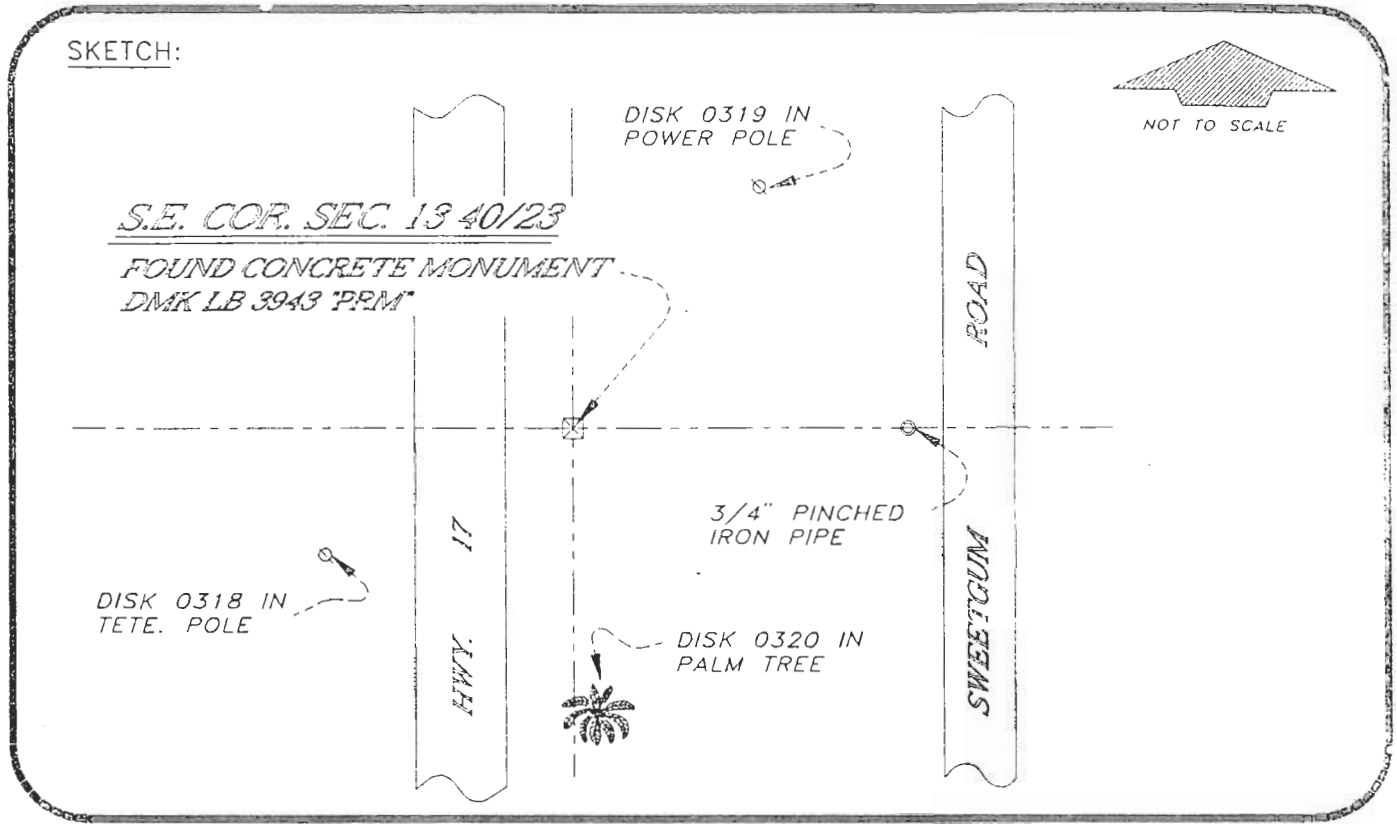
Comments:
REFER: DNR C.C.R. DOC. # 0017067

0047005

4023N25

DOC. #

SKETCH:



BASIS OF BEARING SOLAR OBSERVATION SET SURVEY MARKER POST 5.0' E'LY

REFER FB 301/19

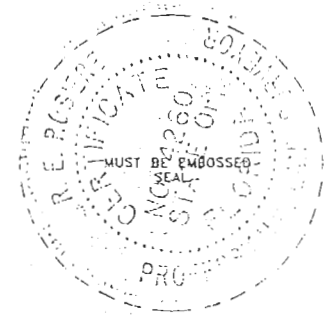
REFERENCE MEASUREMENTS

Description	Bearing	Distance
DISK 0318 IN TELE. POLE	S 67°19'20" W	56.42'
DISK 0319 IN POWER POLE	N 28°37'07" E	67.38'
3/4" PINCHED IRON PIPE	S 88°29'50" E	85.75'
DISK 0320 IN PALM TREE	S 04°46'13" E	70.54'

SURVEYORS CERTIFICATE: I certify the monument and accessories indicated above were field located on SEPTEMBER 29, 19 93

[Signature] PLS 4260
 SIGNATURE
11-16-93
 DATE
 CHARLOTTE COUNTY SURVEY DEPT.
 FIRM OR AGENCY
 7000 FLORIDA STREET
 ADDRESS
 PUNTA GORDA, FLA. 33950
 CITY STATE

508



SEND TO:

Department of Environmental Protection
Bureau of Survey and Mapping
3900 Commonwealth Boulevard
Mail Station 105
Tallahassee, Florida 32399

Completeness checked by: B. Hunter
 Accepted and filed: 12-1-93
 B.L.M. - I.D. 29131819 Date
 D.E.P. USE ONLY