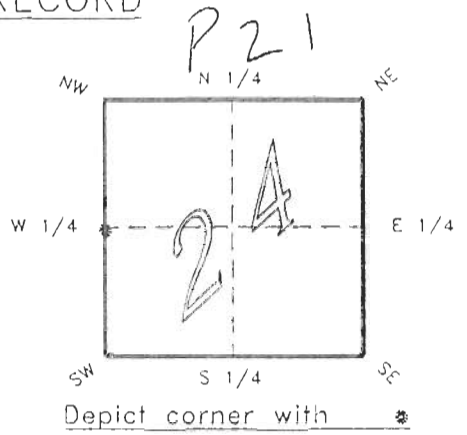


4023P21

FLORIDA DEPARTMENT OF ENVIRONMENTAL PROTECTION
CERTIFIED CORNER RECORD

CORNER DESCRIPTION:

W. 1/4 corner of Section 24 ,
Twp 40 S. , Rge 23 E. ,
Tallahassee Base Meridian,
CHARLOTTE County(s), Florida.



MONUMENTATION DESCRIPTION:

Describe original monument and accessories, or subsequent restoration. Give sources of information. (If no attempt was made to search for the original monument and accessories, this information is not necessary.)

Description of corner evidence found:

TAPERED CONCRETE MONUMENT WITH SECTIONS INSCRIBED IN SIDES AS DESCRIBED IN SURVEY BY A. DUFFIE RECORDED IN PLAT BOOK 2 PAGE 35 C.C.P.R. THIS IS A REFERENCE MONUMENT 16.50' N'LY ALONG SECTION LINE FROM POSITION OF THE TRUE CORNER.

HORIZONTAL POSITION INFORMATION (if determined): OF TRUE COR. POSITION.

Latitude 26°59'04.21701"N Longitude 81°58'30.39460"W
Y(Northing) 293687.467 m X(Easting) 202470.686 m Zone FLW
Convergence 0°00'40.658" Scale factor 0.99994125

Coordinate determination (circle one): Field traverse GPS
Horizontal datum (circle one): NAD27 NAD83(1986) NAD83(1990) other (explain)

Order of accuracy as defined in "Standards and Specifications for Geodetic Control Networks" published by the Federal Geodetic Control Committee (circle one):
1st, 2nd, 3rd, class 1

or Minimum Technical Standards (Chapter 21HH-6, F.A.C.) ratio of closure for field data (example 1:10,000), . This does not specify an order of accuracy.

Control point(s) used for survey: CHARLOTTE COUNTY HORIZONTAL CONTROL NETWORK INCLUDES HAVOLINE 2, PLACIDA 2, W260, PUNTAPORT, & FLGPS 58 AS B ORDER STATIONS.

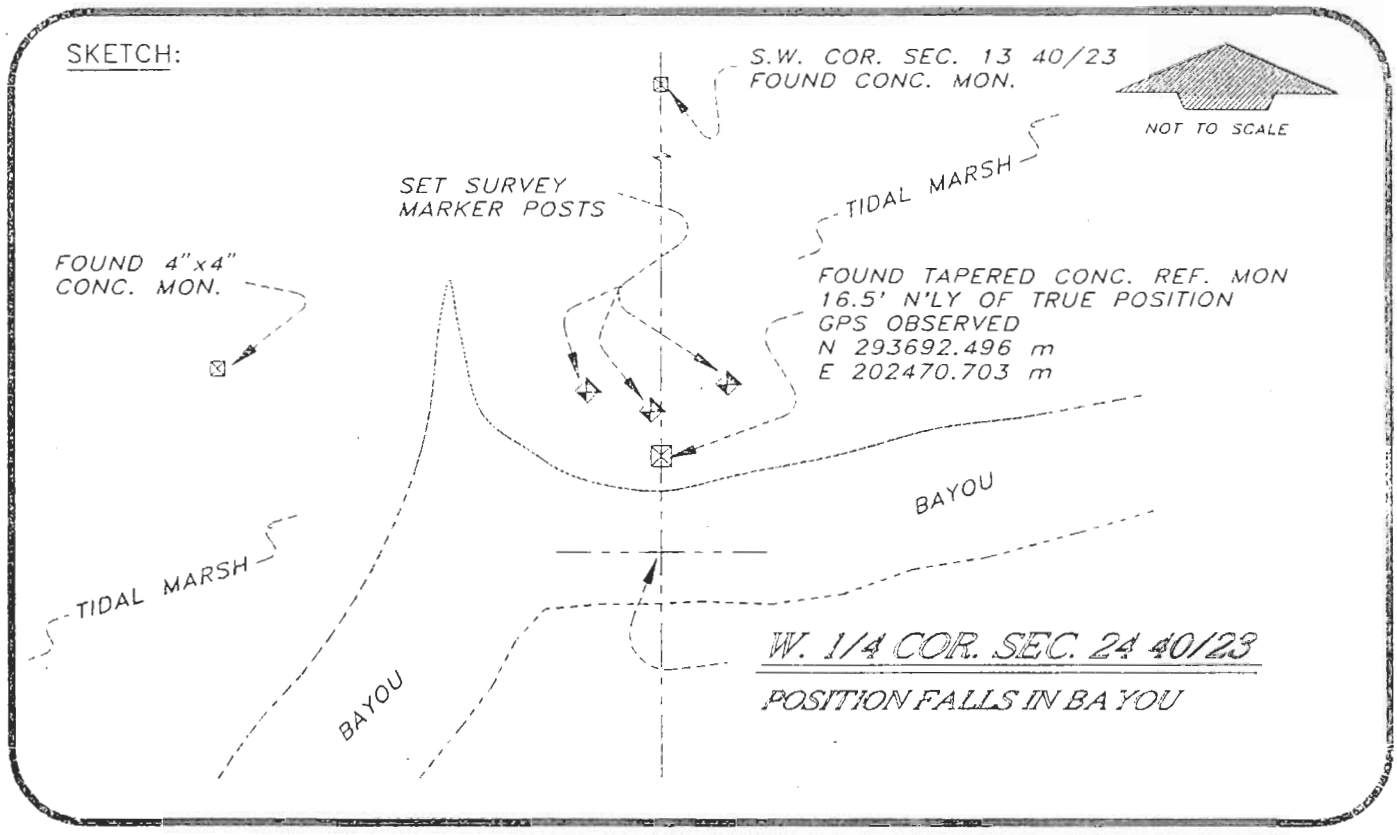
Comments:
REFER TO CCR DOC. # 0017066 FILED BY CARLTON BATES ON JUNE 26, 1983.

0047009

4023P21

DOC. #

SKETCH:

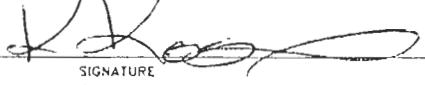


REFER FB 252/55

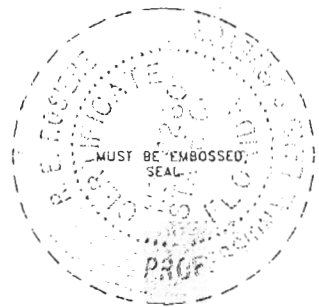
REFERENCE MEASUREMENTS REFERENCES SHOWN BELOW ARE FROM TAPERED CONCRETE MONUMENT AS NO CORNER EXISTS IN BAYOU.

Description	Bearing	Distance
4"x4" CONC. MONUMENT	N 75°30' W mag	114.26'
SURVEY MARKER POST	N 35°20' W mag	14.15'
SURVEY MARKER POST	N 10°10' W mag	4.55'
SURVEY MARKER POST	N 41°00' E mag	14.76'
SW COR. SEC. 13 40/23	N 00°12'17" E GPS	2646.38'

SURVEYORS CERTIFICATE: I certify the monument and accessories indicated above were field located on OCTOBER 1, 19 93.


 SIGNATURE _____ PLS 4260
10-20-93
 DATE _____
 CHARLOTTE COUNTY SURVEY DEPT.
 FIRM OR AGENCY _____
 7000 FLORIDA STREET
 ADDRESS _____
 PUNTA GORDA, FLA. 33950
 CITY STATE _____

508



Completeness checked by: P. Hunter
 Accepted and filed: 12-1-93 Date
 B.L.M. - I.D. 2300CL24 O.N.R. USE ONLY

SEND TO:
 Department of Environmental Protection
 Bureau of Survey and Mapping
 3900 Commonwealth Boulevard
 Mail Station 105
 Tallahassee, Florida 32399