

4023R01

DOC. #

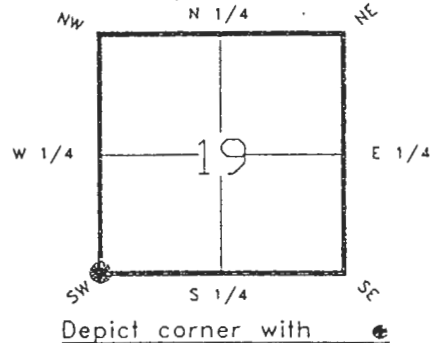
**0045966**

FLORIDA DEPARTMENT OF NATURAL RESOURCES  
CERTIFIED CORNER RECORD

R-01

CORNER DESCRIPTION:

S.W. corner of Section 19 ,  
Twp 40 S. , Rge 23 E. ,  
Tallahassee Base Meridian,  
CHARLOTTE County(s), Florida.



MONUMENTATION DESCRIPTION:

Describe original monument and accessories, or subsequent restoration. Give sources of information. (If no attempt was made to search for the original monument and accessories, this information is not necessary.)

NONE FOUND

Description of corner evidence found:

ROUND POURED CONCRETE MONUMENT

State method(s) to determine corner location (lost corners only):

JUL 26 1993

SURVEY & MAPPING

HORIZONTAL POSITION INFORMATION ( if determined ):

Latitude 26°58'24.66822"N Longitude 82°03'27.68324"W  
Y(Northing) 292471.344(M) X(Easting) 194273.002(M) Zone FL W  
Convergence -0°01'34.201" Scale factor 0.99994158

Coordinate determination (circle one):

Field traverse

**GPS**

Horizontal datum (circle one): NAD27 NAD83(1986) **NAD83(1990)** other (explain)

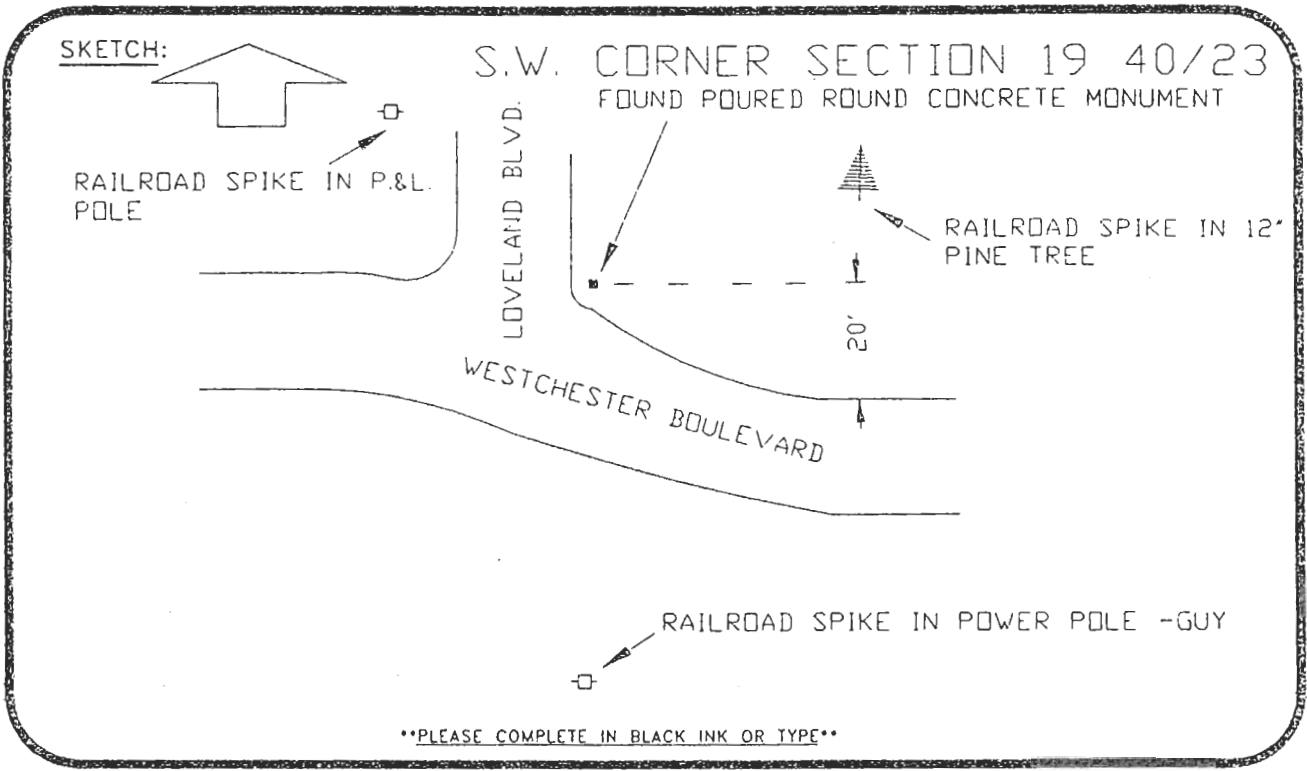
Order of accuracy as defined in "Standards and Specifications for Geodetic Control Networks" published by the Federal Geodetic Control Committee (circle one):

1st **2nd**, 3rd, class 1

or Minimum Technical Standards (Chapter 21HH-6, F.A.C.) ratio of closure for field data: (example 1:10,000), \_\_\_\_\_ . This does not specify an order of accuracy.

Control point(s) used for survey:

Comments:



SET SURVEY MARKER POST N.E.'LY 0.3' REFER: F.B. 276-32  
All bearings and distances must be from the corner to the witness. Indicate whether corner was found, set, or replaced and show north arrow.

REFERENCE MEASUREMENTS ( at least three vicinity references must be given below even if they appear on the above sketch ): BASIS OF BEARING-SOLAR OBSERVATION

Description	Bearing	Distance
RAILROAD SPIKE IN POWER POLE/GUY	S.01°01'20"W.	68.41'
RAILROAD SPIKE IN POWER POLE	N.47°44'22"W.	43.26'
RAILROAD SPIKE IN 12' PINE TREE	N.72°55'17"E.	47.77'
EDGE PAVEMENT	S.'LY 7.3' & W.'LY 4.5'	

SURVEYORS CERTIFICATE: I certify the monument and accessories indicated above were field located on DECEMBER 17, 19 91.

[Signature] PLS 4260  
SIGNATURE

July 12, 1993  
DATE

CHARLOTTE COUNTY SURVEY DEPT.  
FIRM OR AGENCY  
7000 FLORIDA STREET  
ADDRESS  
PUNTA GORDA, FLA. 33950  
CITY STATE



Completeness checked by: G.R. Green  
Accepted and filed: 8-93  
B.L.M. - I.D. 25241930 Date  
D.N.R. USE ONLY

SEND TO:  
Department of Natural Resources  
Bureau of Survey and Mapping  
3900 Commonwealth Boulevard  
Mail Station 105  
Tallahassee, Florida 32399  
DNR 53-001(16)  
REV. 7/16/92  
PAGE 2 OF 2