

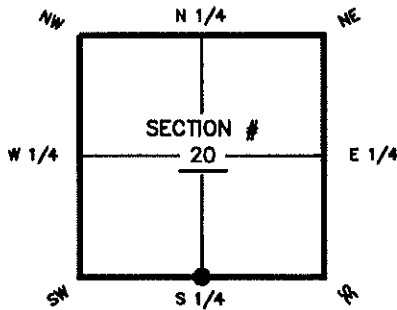
R07

FLORIDA DEPARTMENT OF ENVIRONMENTAL PROTECTION CERTIFIED CORNER RECORD

DOC. # 104065

CORNER DESCRIPTION: MONUMENTATION DESCRIPTION (EVIDENCE FOUND OR METHOD TO SET)

Depict corner with ●



SET $\frac{5}{8}$ " IRON ROD & CAP "LB 7917".
RESET PER CCR# 55500.

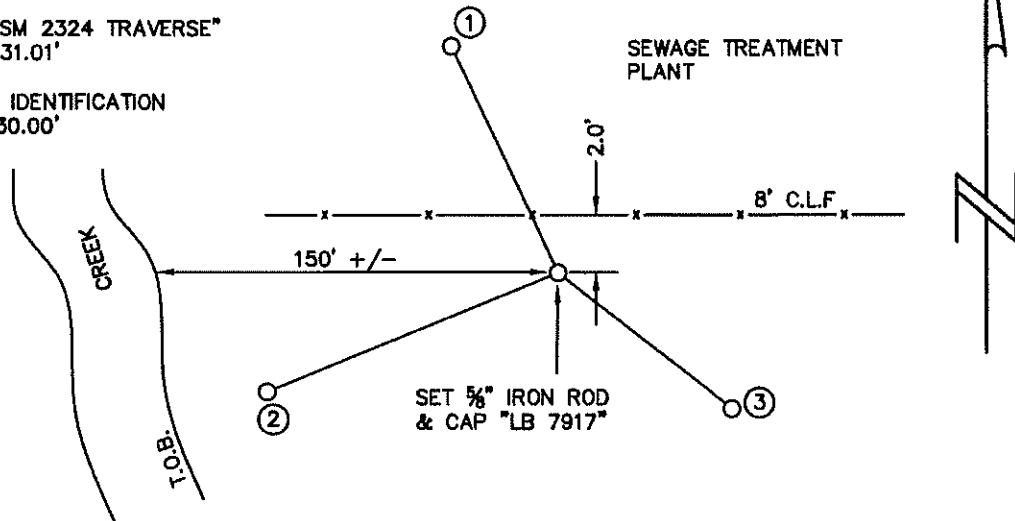
HORIZONTAL POSITION INFORMATION (if determined):

Latitude 26° 56' 24.5161" N Longitude 82° 02' 00.3023" W
Y(NORTHING-Ft.) 959531.523 X(WESTING-Ft.) 645282.782 Zone WEST
Convergence -0° 00' 54.5665" Scale factor 0.99994131

S corner of Section 20
Twp 40 S, Rge 23 E
Tallahassee Base Meridian,
HENDRY County(s), Florida

Coordinate determination (circle one): Field traverse (GPS)
Horizontal datum (circle one): NAD27 NAD83(1986) (NAD83(2007)) other (explain)
Accuracy (circle one): 1st (2nd) 3rd other _____

1. FIRC $\frac{5}{8}$ " "PSM 2324 TRAVERSE"
N 37° W - 26.97'
2. FIRC $\frac{5}{8}$ " "PSM 2324 TRAVERSE"
S 73° W - 31.01'
3. SIR $\frac{5}{8}$ ", NO IDENTIFICATION
S 45° E - 30.00'



Please complete sketch in black ink or type.

SURVEYORS CERTIFICATE:

I certify the monument and accessories indicated above were field located on 10/23/12

Ken Puppl 6126
SIGNATURE PSM NO.
McKIM & CREED, PA 7917
FIRM OR AGENCY LB NO.
5701 DIVISION DRIVE, SUITE A
ADDRESS
FORT MYERS FLORIDA 33905
CITY STATE ZIP
(239) 275-8875 3/22/13
PHONE NUMBER DATE

SEND ORIGINAL TO:
Department of Environmental Protection
Bureau of Surveying and Mapping
3900 Commonwealth Boulevard
Mall Station 105
Tallahassee, Florida 32399

D.E.P. USE ONLY	
Processed: <u>3-27-13</u>	<u>YLE</u>
B.L.M. - I.D. <u>240300</u>	
QUAD - I.D. <u>2417</u>	

EMBOSSSED SEAL OVER SIGNATURE