

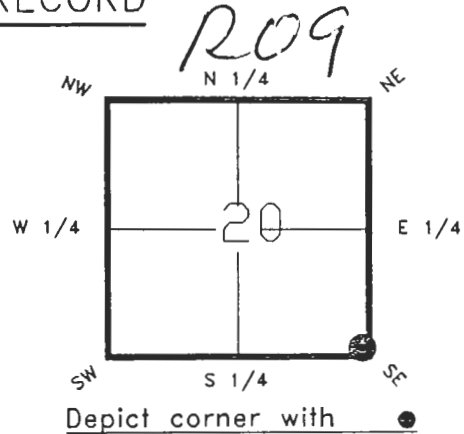
4023R09

DOC. # **0049170**

FLORIDA DEPARTMENT OF NATURAL RESOURCES  
CERTIFIED CORNER RECORD

CORNER DESCRIPTION:

S.E. corner of Section 20 ,  
Twp 40 S. , Rge 23 E. ,  
Tallahassee Base Meridian,  
CHARLOTTE County(s), Florida.



MONUMENTATION DESCRIPTION:

Describe original monument and accessories, or subsequent restoration. Give sources of information. (If no attempt was made to search for the original monument and accessories, this information is not necessary.)

NONE FOUND

Description of corner evidence found:  
CONCRETE MONUMENT (LEANING S.E.)

State method(s) to determine corner location (lost corners only):

HORIZONTAL POSITION INFORMATION ( if determined ):

Latitude 26°58'24.54056"N Longitude 82°01'32.04717"W  
Y(Northing) 292466.364(M) X(Easting) 197461.746(M) Zone FL W  
Convergence -0°00'41.750" Scale factor 0.99994126

Coordinate determination (circle one): Field traverse   GPS

Horizontal datum (circle one): NAD27 NAD83(1986)  NAD83(1990) other (explain)

Order of accuracy as defined in "Standards and Specifications for Geodetic Control Networks" published by the Federal Geodetic Control Committee (circle one):  
1st,  2nd, 3rd, class 1 ,

or Minimum Technical Standards (Chapter 21HH-6, F.A.C.) ratio of closure for field data (example 1:10,000), \_\_\_\_\_ . This does not specify an order of accuracy.

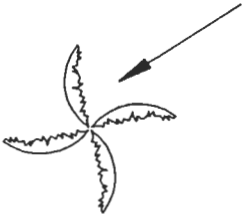
Control point(s) used for survey:

Comments:

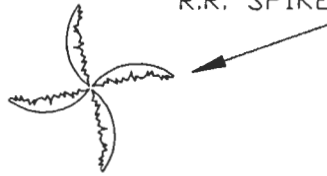
*Correction To E'y Coordinate*

SKETCH:

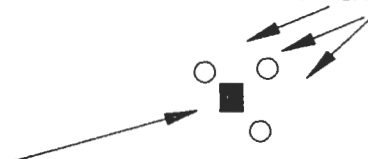
R.R. SPIKE IN 14" CABBAGE PALM



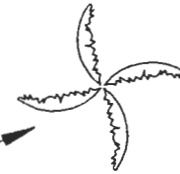
R.R. SPIKE IN 15" CABBAGE PALM



1" IRON GUARD PIPES



S.E. COR. SEC. 20 40/23  
FOUND CONCRETE MONUMENT LEANING S.E.



R.R. SPIKE IN 14" CABBAGE PALM

**\*\*PLEASE COMPLETE IN BLACK INK OR TYPE\*\***

SET SURVEY MARKER POST 4.0' S'LY REFER: F.B. 276-43

All bearings and distances must be from the corner to the witness. Indicate whether corner was found, set, or replaced and show north arrow.

BASIS OF BEARING-SOLAR OBSERVATION

REFERENCE MEASUREMENTS ( at least three vicinity references must be given below even if they appear on the above sketch ):

Description	Bearing	Distance
R.R. SPIKE IN 14' CABBAGE PALM	S.64°15'07"E.	24.47'
R.R. SPIKE IN 14' CABBAGE PALM	N.72°33'07"W.	47.79'
R.R. SPIKE IN 14' CABBAGE PALM	N.12°13'12"W.	17.42'

SURVEYORS CERTIFICATE: I certify the monument and accessories indicated above were field located on 11-02-, 19 92.

[Signature] PLS 4260

SIGNATURE

7-19-94

DATE

CHARLOTTE COUNTY SURVEY DEPT.

FIRM OR AGENCY

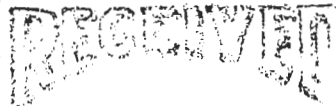
7000 FLORIDA STREET

ADDRESS

PUNTA GORDA, FLA. 33950

CITY

STATE



1111 22 1001

SURVEY & MAPPING



509

SEND TO:

Department of Natural Resources  
Bureau of Survey and Mapping  
3900 Commonwealth Boulevard  
Mail Station 105  
Tallahassee, Florida 32399

DNR 53-001(16)  
REV. 7/16/92  
PAGE 2 OF 2

Completeness checked by: [Signature]  
Accepted and filed: 8-1-94 Date  
B.L.M. - I.D. 2920128 D.N.R. USE ONLY