

4023R13

DOC. #

0045968

FLORIDA DEPARTMENT OF NATURAL RESOURCES
CERTIFIED CORNER RECORD

R-13

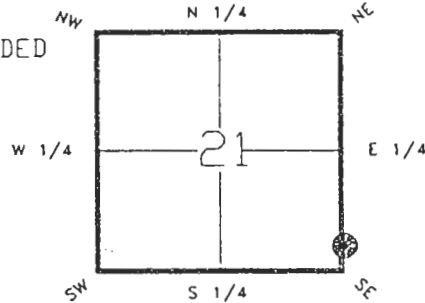
CORNER DESCRIPTION:

CORNER ON EASTERLY LINE SECTION 21 EXTENDED
corner of Section _____,

Twp 40 S. _____, Rge _____ 23 E. _____,

Tallahassee Base Meridian,

_____ CHARLOTTE _____ County(s), Florida.



Depict corner with _____

MONUMENTATION DESCRIPTION:

Describe original monument and accessories, or subsequent restoration. Give sources of information. (If no attempt was made to search for the original monument and accessories, this information is not necessary.)

Description of corner evidence found:

IRON PIPE. REPLACED WITH CHARLOTTE
COUNTY SURVEY DEPARTMENT CONCRETE MONUMENT.

State method(s) to determine corner location (lost corners only):

HORIZONTAL POSITION INFORMATION (if determined):

Latitude 26°58'26.54789"N Longitude 82°00'31.19138"W

Y(Northing) 292527.916(M) X(Easting) 199139.882(M) Zone FL W

Convergence -0°00'14.148" Scale factor 0.99994119

Coordinate determination (circle one): Field traverse GPS

Horizontal datum (circle one): NAD27 NAD83(1986) NAD83(1990) other (explain)

Order of accuracy as defined in "Standards and Specifications for Geodetic Control Networks" published by the Federal Geodetic Control Committee (circle one):
1st, 2nd, 3rd, class _____

or Minimum Technical Standards (Chapter 21HH-6, F.A.C.) ratio of closure for field data (example 1:10,000), _____ . This does not specify an order of accuracy.

Control point(s) used for survey:

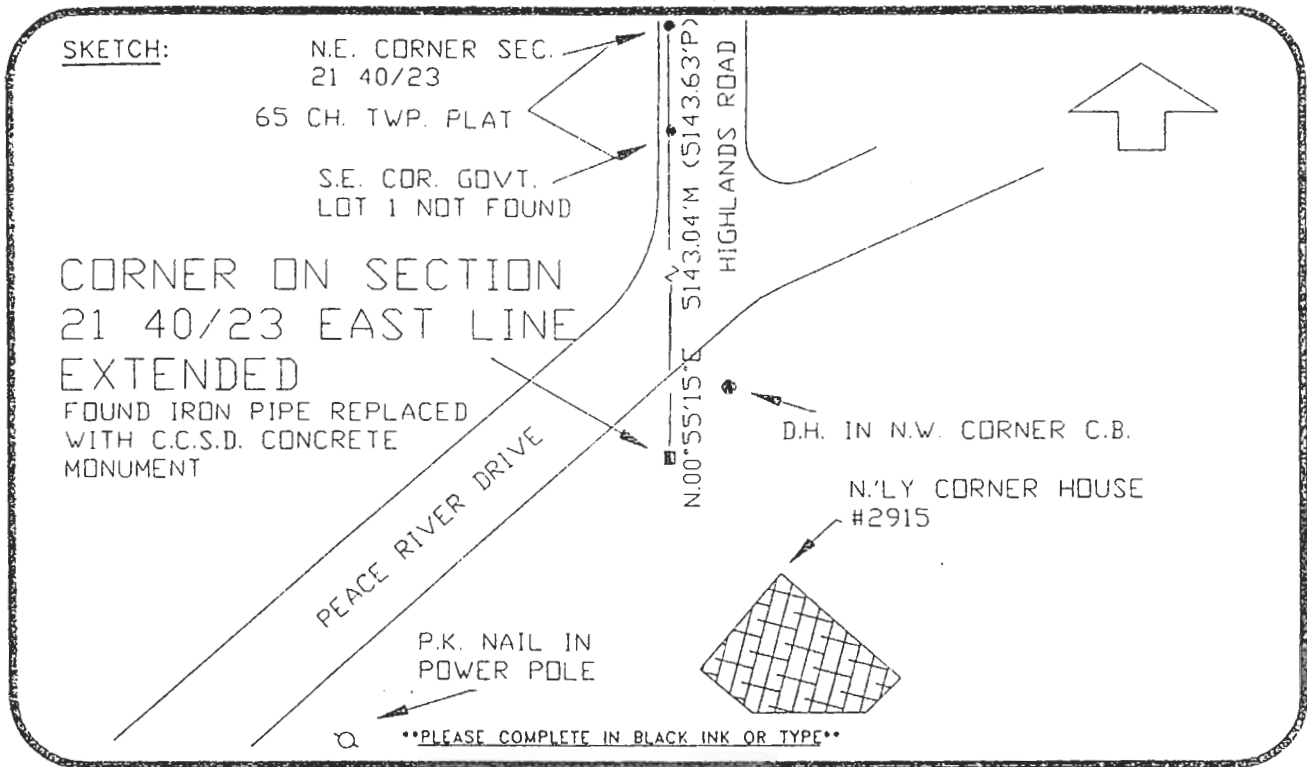
Comments:

RECEIVED

JUL 26 1993.

SURVEY & MAPPING
REV: 7/16/92
PAGE 1 OF 2

DOC. #



(REFER: HARBOUR HEIGHTS SUBDIVISION, SECTION 9, P.B.4 PG.38) REFER: 276-45
All bearings and distances must be from the corner to the witness. Indicate whether corner was found, set, or replaced and show north arrow.

SET SURVEY MARKER POST 3.0'S.'LY
REFERENCE MEASUREMENTS (at least three vicinity references must be given below even if they appear on the above sketch):

Description	Bearing	Distance
DRILL HOLE IN CATCH BASIN	N.40°01'44"E.	21.80'
N.'LY CORNER HOUSE #2915	S.44°44'15"E.	36.68'
P.K. NAIL IN POWER POLE	S.48°59'00"W.	98.51'

SURVEYORS CERTIFICATE: I certify the monument and accessories indicated above were field located on JANUARY 9, 19 92.

[Signature]
SIGNATURE PLS 4260
July 12, 1993
DATE
CHARLOTTE COUNTY SURVEY DEPT.
FIRM OR AGENCY
7000 FLORIDA STREET
ADDRESS
PUNTA GORDA, FLA. 33950
CITY STATE



SEND TO:

Department of Natural Resources
Bureau of Survey and Mapping
3900 Commonwealth Boulevard
Mail Station 105
Tallahassee, Florida 32399

DNR 53-001(16)
REV. 7/16/92
PAGE 2 OF 2

Completeness checked by: *JK Green*
Accepted and filed: *8-93*
Date
B.L.M. - I.D. *21SLW022* D.N.R. USE ONLY