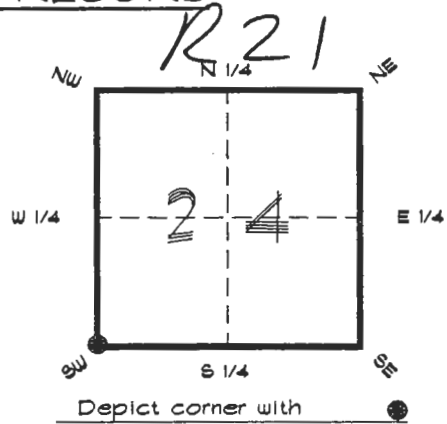


4023R21

**FLORIDA DEPARTMENT OF ENVIRONMENTAL PROTECTION**  
**CERTIFIED CORNER RECORD**

CORNER DESCRIPTION:

S. W. corner of Section 24 ,  
Twp 40 S. , Rge 23 E. ,  
Tallahassee Base Meridian,  
CHARLOTTE County(s), Florida.



MONUMENTATION DESCRIPTION:

Describe original monument and accessories, or subsequent restoration. Give sources of information. (If no attempt was made to search for the original monument and accessories, this information is not necessary.)

Description of corner evidence found:

**3"x3" CONCRETE MONUMENT WITH L.WOOD POST ADJACENT ON NORTH SIDE**

State method(s) to determine corner location (lost corners only):

HORIZONTAL POSITION INFORMATION ( if determined ):

Latitude 26°58'34.07512" N Longitude 81°58'34.61516" W

Y(Northing) 292759.770 m X(Easting) 202354.487 m Zone FLW

Convergence 0°00'38.732" Scale factor 0.99994124

Coordinate determination (circle one): Field traverse  **GPS**

Horizontal datum (circle one): NAD27 NAD83(1986) **NAD83(1990)** other (explain)

Order of accuracy as defined in Standards and Specifications for Geodetic Control Networks published by the Federal Geodetic Control Committee (circle one):

1st, **2nd**, 3rd, class 1

or Minimum Technical Standards (Chapter 6IG17, F.A.C.) ratio of closure for field data (example 1:10,000),                     . This does not specify an order of accuracy.

Control point(s) used for survey: CHARLOTTE COUNTY HORIZONTAL CONTROL NETWORK INCLUDES HAYOLINE 2, PLACIDA 2, W260, PUNTPORT, & FLGPS STATIONS.

Comments:

CORRECTION TO NORTH COORDINATE.

**RECEIVED**

**'AUG 8 1994**

**SURVEY & MAPPING**

SKETCH:

RAILROAD SPIKE IN  
BASE PEPPER TREE



S. W. COR. SEC. 24 40/23  
FOUND CONC. MONUMENT



NOT TO SCALE

RAILROAD SPIKE IN  
BASE PEPPER TREE



PK NAIL IN  
RAILROAD TIE

RIVERSIDE DRIVE  
1500' +/-

SEABOARD COAST  
LINE RAILROAD

BASIS OF BEARING SOLAR OBSERVATION

REFER: FB 251/24

SET SURVEY MARKER POST 2.4' N'LY

REFERENCE MEASUREMENTS

Description	Bearing	Distance
R.R. SPIKE IN PEPPER TREE	N 25°58'04" W	3.68'
R.R. SPIKE IN PEPPER TREE	S 76°30'39" E	35.97'
PK NAIL IN R.R. TIE	S 70°40'14" E	142.50'

SURVEYORS CERTIFICATE: I certify the monument and accessories indicated above were field located on FEBRUARY 1, 1992

*R. Rose*

PLS 4260

SIGNATURE

8-4-94

DATE

CHARLOTTE COUNTY SURVEY DEPT.

FIRM OR AGENCY

1000 FLORIDA STREET

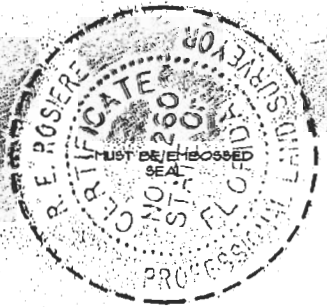
ADDRESS

PUNTA GORDA, FLORIDA 33950

CITY

STATE

508



Completeness checked by: *B. Linton*

Accepted and filed: *9-1-94* Date

BLM. - ID. *26232425* D.N.R. USE ONLY

SEND TO:

Department of Environmental Protection  
Bureau of Survey and Mapping  
3900 Commonwealth Boulevard  
Mail Station 105  
Tallahassee, Florida 32399