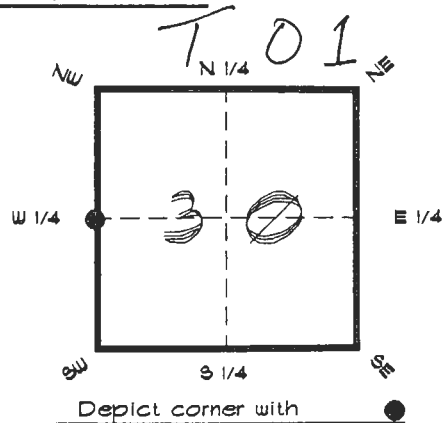


4023T01

**FLORIDA DEPARTMENT OF ENVIRONMENTAL PROTECTION
CERTIFIED CORNER RECORD**

CORNER DESCRIPTION:

W. 1/4 corner of Section 30 ,
Twp 40 S. , Rge 23 E. ,
Tallahassee Base Meridian,
CHARLOTTE County(s), Florida.



MONUMENTATION DESCRIPTION:

Describe original monument and accessories, or subsequent restoration. Give sources of information. (If no attempt was made to search for the original monument and accessories, this information is not necessary.)

Description of corner evidence found:

RAILROAD SPIKE

State method(s) to determine corner location (lost corners only):

HORIZONTAL POSITION INFORMATION (if determined):

Latitude 26°57'58.25397" N Longitude 82°03'27.76235" W
Y(Northing) 291658.398 m X(Easting) 194270.449 m Zone FLW
Convergence -0°01'34.213" Scale factor 0.99994158

Coordinate determination (circle one): Field traverse **GPS**

Horizontal datum (circle one): NAD27 NAD83(1986) **NAD83(1990)** other (explain)

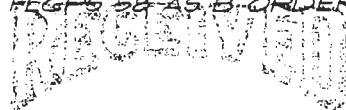
Order of accuracy as defined in Standards and Specifications for Geodetic Control Networks published by the Federal Geodetic Control Committee (circle one):

1st, **2nd**, 3rd, class 1

or Minimum Technical Standards (Chapter 6IG17, F.A.C.) ratio of closure for field data (example 1:10,000), _____ . This does not specify an order of accuracy.

Control point(s) used for survey: *CHARLOTTE COUNTY HORIZONTAL CONTROL NETWORK INCLUDES HAVOLINE 2, FLACIDA 2, W260, PUNTPORT, & FLGPS 58-AS-B-ORDER STATIONS.*

Comments:



MAR 23 1991

4023T01

DOC. #

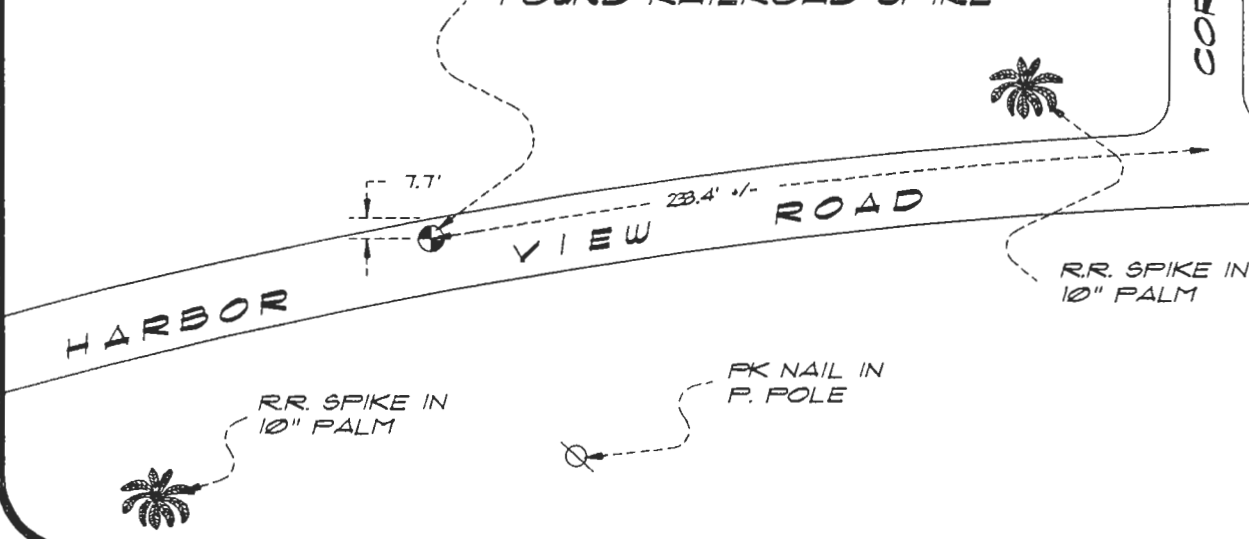
0048024

SKETCH:



W. 1/4 COR. SEC. 30 40/23
FOUND RAILROAD SPIKE

CORTEZ DRIVE



BASIS OF BEARING SOLAR OBSERVATION

REFER: FB 276/20

REFERENCE MEASUREMENTS

Description	Bearing	Distance
R.R. SPIKE IN 10" PALM	S 54°26'57" W	96.97'
R.R. SPIKE IN 10" PALM	N 76°27'22" E	187.02'
FK NAIL IN P. POLE	S 30°10'24" E	55.15'

SURVEYORS CERTIFICATE: I certify the monument and accessories indicated above were field located on NOVEMBER 12, 1992

R. Rose

PLS 4260

SIGNATURE

3-17-94

DATE

CHARLOTTE COUNTY SURVEY DEPT.

FIRM OR AGENCY

1000 FLORIDA STREET

ADDRESS

PUNTA GORDA, FLORIDA 33950

CITY

STATE

509



Completeness checked by: B. Linton
 Accepted and filed: 4-1-94 Date
 BLM. - I.D. 2500CL30 D.N.R. USE ONLY

SEND TO:

Department of Environmental Protection
Bureau of Survey and Mapping
3900 Commonwealth Boulevard
Mail Station 105
Tallahassee, Florida 32399