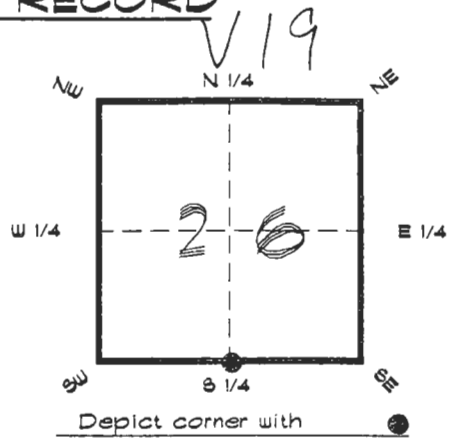


4023V19

**FLORIDA DEPARTMENT OF ENVIRONMENTAL PROTECTION**  
**CERTIFIED CORNER RECORD**

CORNER DESCRIPTION:

S. 1/4 corner of Section 26,  
Twp 40 S., Rge 23 E.,  
Tallahassee Base Meridian,  
CHARLOTTE County(s), Florida.



MONUMENTATION DESCRIPTION:

Describe original monument and accessories, or subsequent restoration. Give sources of information. (If no attempt was made to search for the original monument and accessories, this information is not necessary.)

Description of corner evidence found:

2" IRON PIPE

State method(s) to determine corner location (lost corners only):

HORIZONTAL POSITION INFORMATION (if determined):

Latitude 26°57'40.66150" N Longitude 81°59'03.61837" W

Y(Northing) 29115.746 m X(Easting) 201554.927 m Zone FLW

Convergence 0°00'25.563" Scale factor 0.99994121

Coordinate determination (circle one): Field traverse GPS

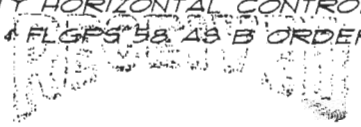
Horizontal datum (circle one): NAD27 NAD83(1986) NAD83(1990) other (explain)

Order of accuracy as defined in Standards and Specifications for Geodetic Control Networks published by the Federal Geodetic Control Committee (circle one):  
1st, 2nd, 3rd, class \_\_\_\_\_

or Minimum Technical Standards (Chapter 6IG17, F.A.C.) ratio of closure for field data (example 1:10,000), \_\_\_\_\_. This does not specify an order of accuracy.

Control point(s) used for survey: CHARLOTTE COUNTY HORIZONTAL CONTROL NETWORK INCLUDES HAVOLINE 2, PLACIDA 2, W260, PUNTPORT, 4 FLGPS 58, 48 B ORDER STATIONS.

Comments:

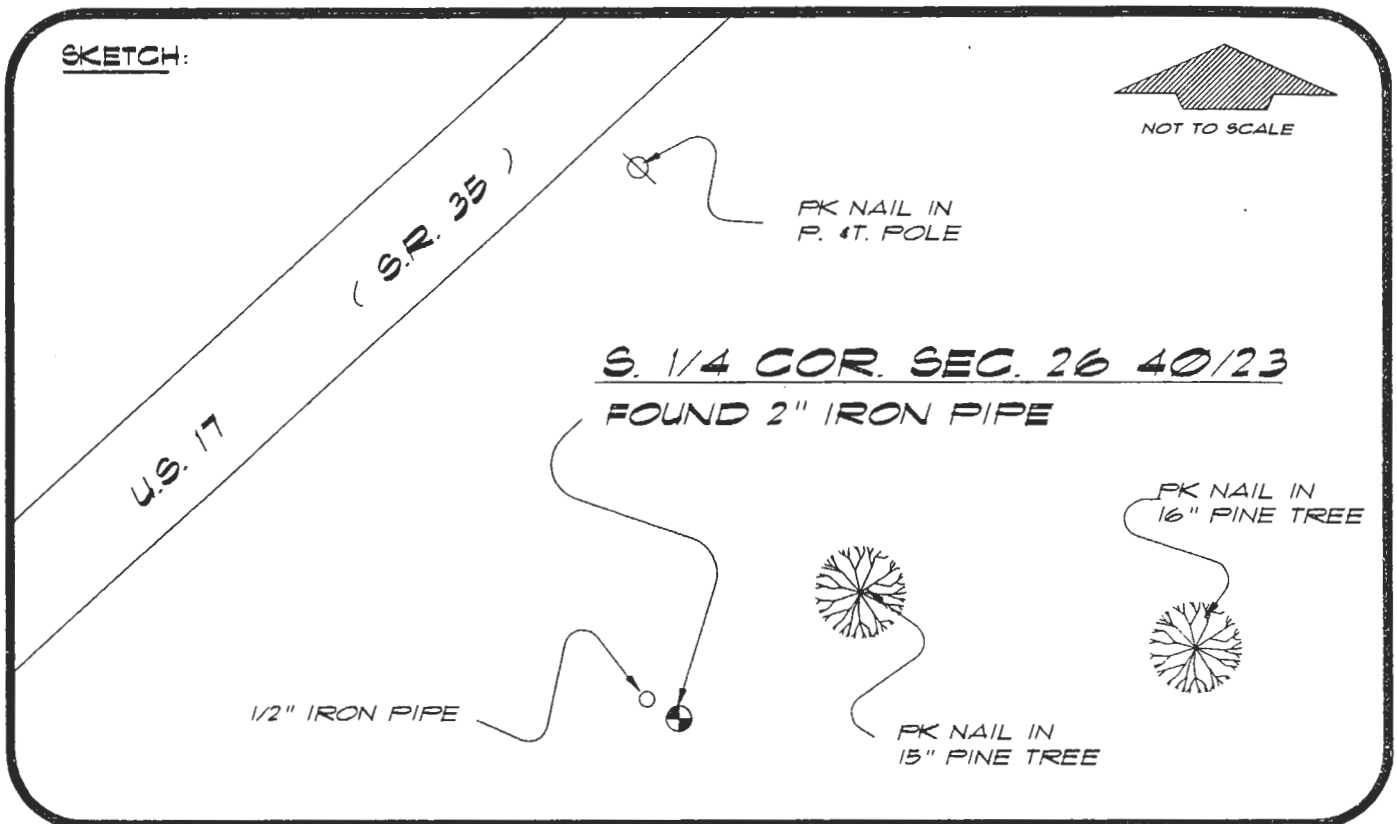


MAR 23 1991

0048023

4023V19

DOC. #



BASIS OF BEARING SOLAR OBSERVATION  
SET SURVEY MARKER POST 3.1' S.E.'LY

REFER: FB 251/29

REFERENCE MEASUREMENTS

<u>Description</u>	<u>Bearing</u>	<u>Distance</u>
FK NAIL IN 16' PINE TREE	N 84°26'51" E	176.94'
FK NAIL IN 15" PINE TREE	N 52°04'16" E	55.03'
FK NAIL IN P. & T. POLE	N 01°54'04" W	116.62'
1/2" IRON PIPE	N.W.'LY	1.23'

SURVEYORS CERTIFICATE: I certify the monument and accessories indicated above were field located on FEBRUARY 2, 1992

R. Rosier PLS 4260  
SIGNATURE

3-17-94  
DATE

CHARLOTTE COUNTY SURVEY DEPT.  
FIRM OR AGENCY

1000 FLORIDA STREET  
ADDRESS

PUNTA GORDA, FLORIDA 33950  
CITY STATE

508



Completeness checked by: B. Dixon  
 Accepted and filed: 4-1-94 Date  
 BLM. - ID. 35CL0026 DNR USE ONLY

**SEND TO:**  
 Department of Environmental Protection  
 Bureau of Survey and Mapping  
 3900 Commonwealth Boulevard  
 Mail Station 105  
 Tallahassee, Florida 32399