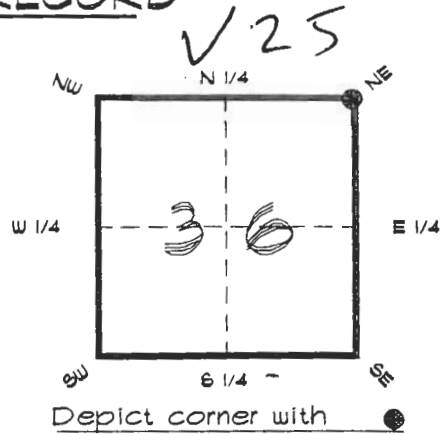


4023V25

**FLORIDA DEPARTMENT OF ENVIRONMENTAL PROTECTION
CERTIFIED CORNER RECORD**

CORNER DESCRIPTION:

N. E. corner of Section 36 ,
Twp 40 S. , Rge 23 E. ,
Tallahassee Base Meridian,
CHARLOTTE County(s), Florida.



MONUMENTATION DESCRIPTION:

Describe original monument and accessories, or subsequent restoration. Give sources of information. (If no attempt was made to search for the original monument and accessories, this information is not necessary.)

Description of corner evidence found:
4"x4" CONCRETE MONUMENT

State method(s) to determine corner location (lost corners only):

HORIZONTAL POSITION INFORMATION (if determined):

Latitude 26°57'41.59016" N Longitude 81°57'34.61463" W
Y(Northing) 291144.872 m X(Easting) 204009.518 m Zone FLW
Convergence 0°01'05.917" Scale factor 0.99994137

Coordinate determination (circle one): Field traverse **GPS**

Horizontal datum (circle one): NAD27 NAD83(1986) **NAD83(1990)** other (explain)

Order of accuracy as defined in "Standards and Specifications for Geodetic Control Networks" published by the Federal Geodetic Control Subcommittee (circle one):
1st, **2nd**, 3rd, class _____

or Minimum Technical Standards (Chapter 21HH-6, F.A.C.) ratio of closure for field data (example 1:10,000), _____. This does not specify an order of accuracy.

Control point(s) used for survey: CHARLOTTE COUNTY HORIZONTAL CONTROL NETWORK INCLUDES HAVOLINE 2, PLACIDA 2, W260, PUNTPORT, & FLGPS 58 AS B ORDER STATIONS.

Comments:

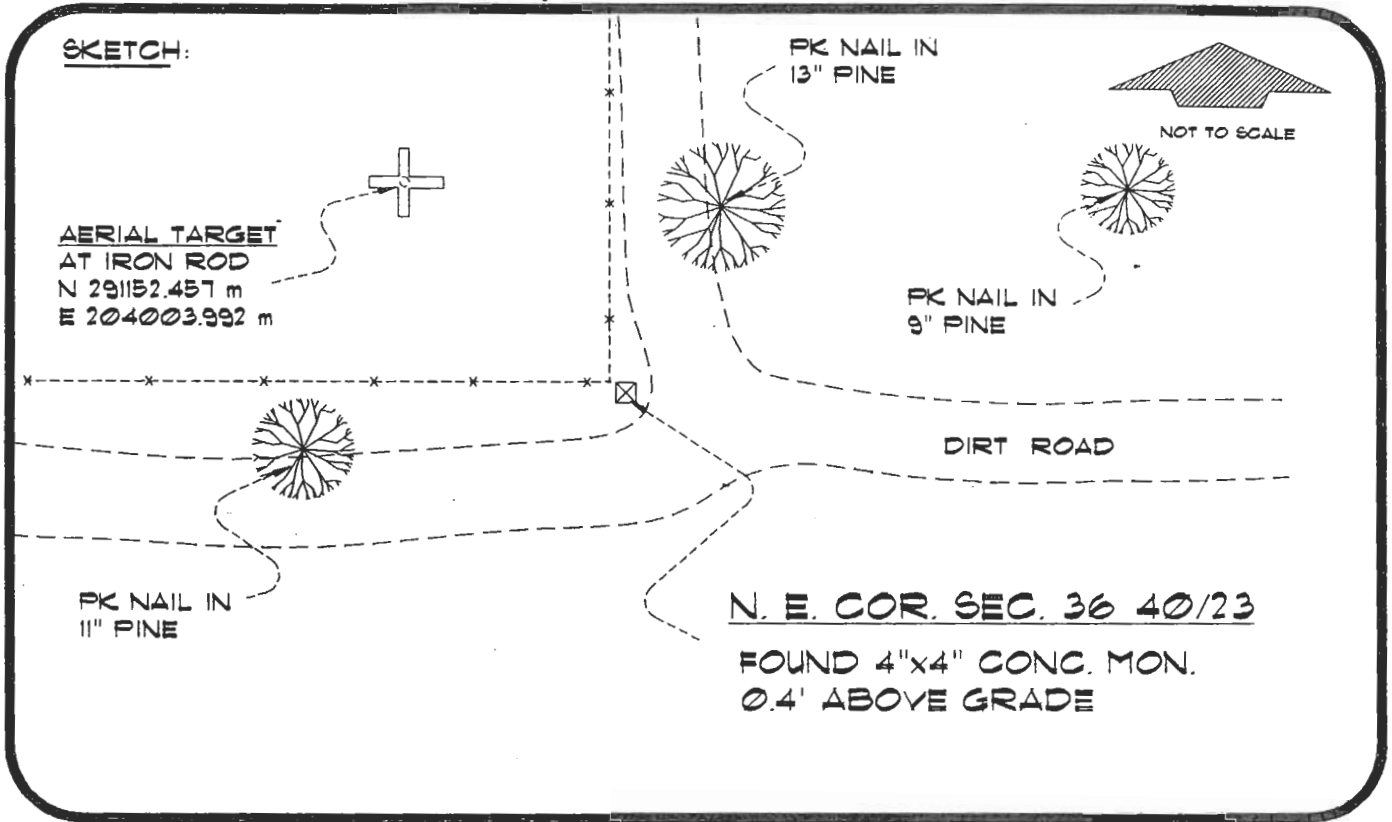
DEC 27 1994

SHAW-BY & MARTINO

4023V25

DOC. #

0050498



BASIS OF BEARING SOLAR OBSERVATION
SET SURVEY MARKER POST 2.3' W'LY

REFER: FB 251/28
FB 298/57

REFERENCE MEASUREMENTS

Description	Bearing	Distance
PK NAIL IN 11" PINE TREE	S 82°00'04" W	39.50'
PK NAIL IN 13" PINE TREE	N 18°51'29" E	23.24'
PK NAIL IN 9" PINE TREE	N 70°33'49" E	77.51'
IRON ROD AT AERIAL TARGET	N 36°05'44" W	30.79'
CORNER FENCE POST	N.W'LY	1.5'

SURVEYORS CERTIFICATE: I certify the monument and accessories indicated above were field located on DECEMBER 12, 1994

R. Rose

PLS 4260

SIGNATURE

DECEMBER 21, 1994

DATE

CHARLOTTE COUNTY SURVEY DEPT.

FIRM OR AGENCY

1000 FLORIDA STREET

ADDRESS

PUNTA GORDA, FLA. 33950

CITY

STATE

508



Completeness checked by: *B. Lunde*

Accepted and filed: *Di-175*

BLM - ID. 36253031 Date _____

DNR USE ONLY

SEND TO:

Department of Environmental Protection
Bureau of Survey and Mapping
3900 Commonwealth Boulevard
Mail Station 105
Tallahassee, Florida 32399