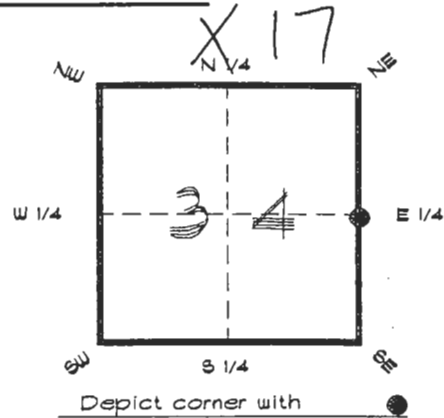


4023X17

FLORIDA DEPARTMENT OF ENVIRONMENTAL PROTECTION
CERTIFIED CORNER RECORD

CORNER DESCRIPTION:

E. 1/4 corner of Section 34 ,
Twp 40 S. , Rge 23 E. ,
Tallahassee Base Meridian,
CHARLOTTE County(s), Florida.



MONUMENTATION DESCRIPTION:

Describe original monument and accessories, or subsequent restoration. Give sources of information. (If no attempt was made to search for the original monument and accessories, this information is not necessary.)

Description of corner evidence found:

3"X3" CONCRETE MONUMENT (BURIED R.R. SPIKE ADJACENT S'LY FOR METAL LOCATION)

State method(s) to determine corner location (lost corners only):

HORIZONTAL POSITION INFORMATION (if determined):

Latitude 26°57'16.17203" N Longitude 81°59'32.95974" W
Y(Northing) 290361.966 m X(Easting) 200745.778 m Zone FLW
Convergence 0°00'12.257" Scale factor 0.99994118

Coordinate determination (circle one): Field traverse GPS

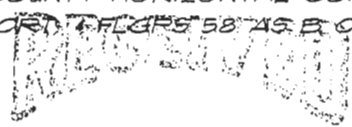
Horizontal datum (circle one): NAD27 NAD83(1986) NAD83(1990) other (explain)

Order of accuracy as defined in Standards and Specifications for Geodetic Control Networks published by the Federal Geodetic Control Committee (circle one):
1st, 2nd, 3rd, class _____

or Minimum Technical Standards (Chapter 6IGIT, F.A.C.) ratio of closure for field data (example 1:10,000), _____ . This does not specify an order of accuracy.

Control point(s) used for survey: CHARLOTTE COUNTY HORIZONTAL CONTROL NETWORK INCLUDES HAVOLINE 2, FLACIDA 2, W260, PUNTPOIN, FLGPS 58 AS B ORDER STATIONS.

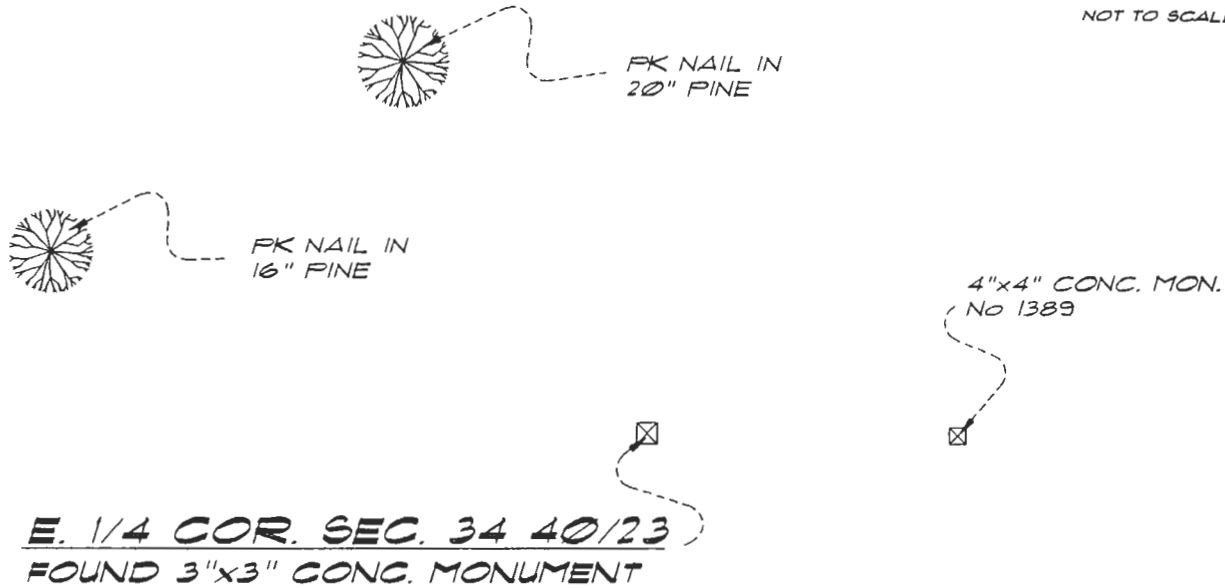
Comments:



MAR 23 1994

SURVEY & MAPPING

SKETCH:



E. 1/4 COR. SEC. 34 40/23
 FOUND 3"x3" CONC. MONUMENT

BASIS OF BEARING SOLAR OBSERVATION
 SET SURVEY MARKER POST 2.3' S'LY

REFER: FB 251/59

REFERENCE MEASUREMENTS

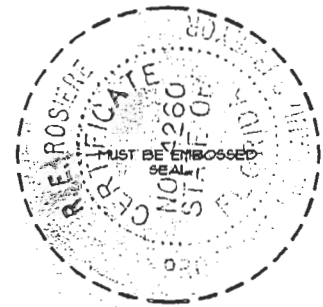
<u>Description</u>	<u>Bearing</u>	<u>Distance</u>
FK NAIL IN 20" PINE	N 27°31'47" W	134.90'
FK NAIL IN 16" PINE	N 74°36'09" W	165.37'
4"x4" CONC. MON.	S 89°23'07" E	69.53'

SURVEYORS CERTIFICATE: I certify the monument and accessories indicated above were field located on MARCH 4, 1993

R. P. Rose PLS 4260
 SIGNATURE
3-17-94
 DATE

CHARLOTTE COUNTY SURVEY DEPT.
 FIRM OR AGENCY
7000 FLORIDA STREET
 ADDRESS
PUNTA GORDA, FLORIDA 33950
 CITY STATE

508



Completeness checked by: B. Linton
 Accepted and filed: 4-1-94 Date
 B.L.M. - I.D. 3400CL35 D.N.R. USE ONLY

SEND TO:
 Department of Environmental Protection
 Bureau of Survey and Mapping
 3900 Commonwealth Boulevard
 Mail Station 105
 Tallahassee, Florida 32399