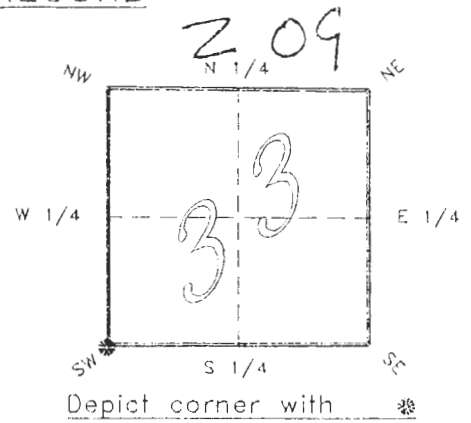


4023Z09

FLORIDA DEPARTMENT OF ENVIRONMENTAL PROTECTION  
CERTIFIED CORNER RECORD

CORNER DESCRIPTION:

S.W. corner of Section 33 ,  
Twp 40 S. , Rge 23 E. ,  
Tallahassee Base Meridian,  
CHARLOTTE County(s), Florida.



MONUMENTATION DESCRIPTION:

Describe original monument and accessories, or subsequent restoration. Give sources of information. (If no attempt was made to search for the original monument and accessories, this information is not necessary.)

Description of corner evidence found:

3/4" IRON PIPE, REPLACED WITH C.C.S.D. CONCRETE MONUMENT

State method(s) to determine corner location (lost corners only):

HORIZONTAL POSITION INFORMATION ( if determined ):

Latitude 26°56'50.65599"N Longitude 82°01'30.65635"W  
Y(Northing) 289576.892 m X(Easting) 197499.517 m Zone FLW  
Convergence -0°00'41.083" Scale factor 0.99994125

Coordinate determination (circle one): Field traverse GPS  
Horizontal datum (circle one): NAD27 NAD83(1986) NAD83(1990) other (explain)

Order of accuracy as defined in "Standards and Specifications for Geodetic Control Networks" published by the Federal Geodetic Control Committee (circle one):  
1st, 2nd, 3rd class 1

or Minimum Technical Standards (Chapter 21HH-6, F.A.C.) ratio of closure for field data (example 1:10,000), \_\_\_\_\_ . This does not specify an order of accuracy.

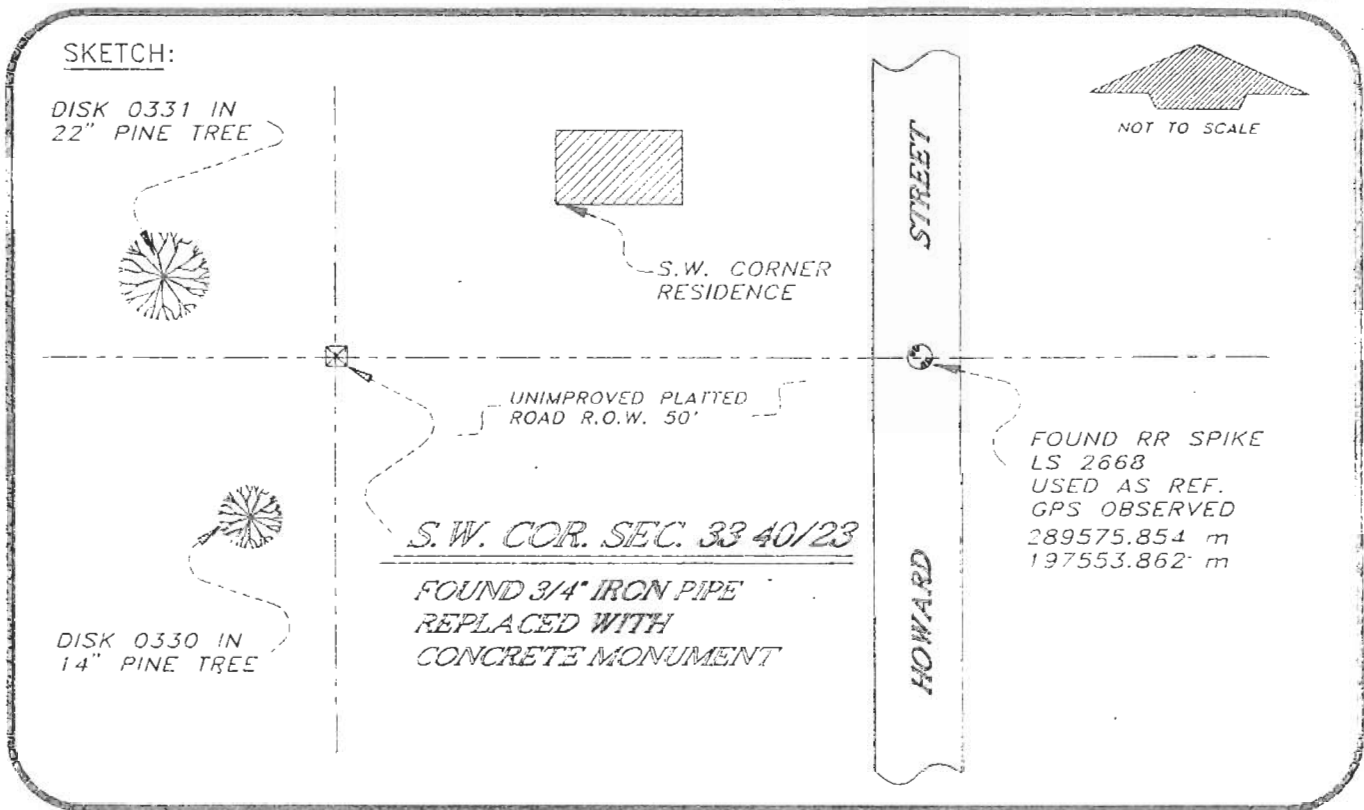
Control point(s) used for survey: CHARLOTTE COUNTY HORIZONTAL CONTROL NETWORK INCLUDES HAVOLINE 2, PLACIDA 2, W260, PUNTAPORT, & FLGPS 58 AS B ORDER STATIONS.

Comments:

4023Z09

DOC. #

0047286



BASIS OF BEARING SOLAR OBSERVATION  
 SET SURVEY MARKER POST 3.0' W'LY  
 REFERENCE MEASUREMENTS

REFER: FB 301/12

Description	Bearing	Distance
DISK 0330 IN 14" PINE	S 19°25'30" W	40.88'
DISK 0331 IN 22" PINE	N 75°11'38" W	36.23'
S.W. COR. RESIDENCE	N 61°56'52" E	50.75'
RR SPIKE LS 2668	S 88°53'40" E	178.34' (54.358 m)
	( S 88°54'20" E GRID)	

**SURVEYORS CERTIFICATE:** I certify the monument and accessories indicated above were field located on NOVEMBER 1, 1993.

*R. Rose*  
 SIGNATURE

PLS 4260

12-3-93

DATE

CHARLOTTE COUNTY SURVEY DEPT.

FIRM OR AGENCY

7000 FLORIDA STREET

ADDRESS

PUNTA GORDA,

CITY

FLA.

STATE

33950



509

Completeness checked by: *B. Bent*  
 Accepted and filed: 1-3-94 Date  
 B.L.M. - I.D. 00323300 D.N.R. USE ONLY

SEND TO:

Department of Environmental Protection  
 Bureau of Survey and Mapping  
 3900 Commonwealth Boulevard  
 Mail Station 105  
 Tallahassee, Florida 32399