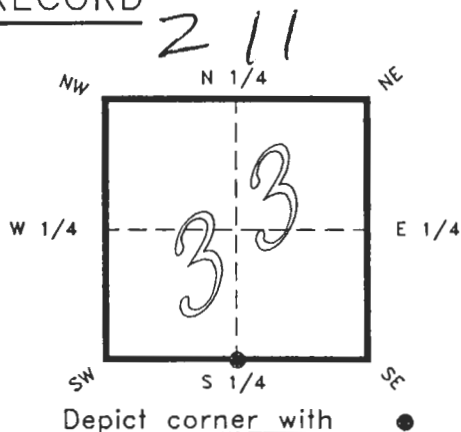


FLORIDA DEPARTMENT OF NATURAL RESOURCES
CERTIFIED CORNER RECORD

CORNER DESCRIPTION:

S. 1/4 corner of Section 33 ,
Twp 40 S. , Rge 23 E. ,
Tallahassee Base Meridian,
CHARLOTTE County(s), Florida.



MONUMENTATION DESCRIPTION:

Describe original monument and accessories, or subsequent restoration. Give sources of information. (If no attempt was made to search for the original monument and accessories, this information is not necessary.)

Description of corner evidence found:

CONCRETE MONUMENT BROKEN, REPLACED WITH CONCRETE MONUMENT

State method(s) to determine corner location (lost corners only):

HORIZONTAL POSITION INFORMATION (if determined):

Latitude 26°56'50.46882" N Longitude 82°01'01.33270" W
Y(Northing) 289570.997 m X(Easting) 198308.321 m Zone FLW
Convergence -0°00'27.794" Scale factor 0.99994121

Coordinate determination (circle one): Field traverse GPS
Horizontal datum (circle one): NAD27 NAD83(1986) NAD83(1990) other (explain)

Order of accuracy as defined in "Standards and Specifications for Geodetic Control Networks" published by the Federal Geodetic Control Committee (circle one):
1st, 2nd, 3rd, class 1 ,

or Minimum Technical Standards (Chapter 21HH-6, F.A.C.) ratio of closure for field data (example 1:10,000), _____ . This does not specify an order of accuracy.

Control point(s) used for survey: *CHARLOTTE COUNTY HORIZONTAL CONTROL NETWORK INCLUDES HAVOLINE 2, PLACIDA 2, W260, PUNTAPORT, & FLGPS 58 AS B ORDER STATIONS.*

Comments:

4023Z11

DOC. #

0049171

SKETCH:

S 1/4 COR. SEC. 33 40/23

FOUND BROKEN CONCRETE MONUMENT, REPLACED WITH CONCRETE MONUMENT

PK NAIL IN 8" PINE TREE



N. 1/4 COR. SEC. 4 41/23

S 89°35'27" E 759.17' meas.

PK NAIL IN 11" PALM TREE

PK NAIL IN LEANING 12" PALM TREE

DRIVE

MORNINGSTAR

GPS OBSERVED PK NAIL WITH DISK 0315 IN CL PAVEMENT

BASIS OF BEARING SOLAR OBSERVATION

REFER FB 301/07

All bearings and distances must be from the corner to the witness. Indicate whether corner was found, set, or replaced and show north arrow.

SET SURVEY MARKER POST 3.1' W'LY

REFERENCE MEASUREMENTS (at least three vicinity references must be given below even if they appear on the above sketch):

Description	Bearing	Distance
PK NAIL IN 8" PINE TREE	N 18°33'22" E	21.16'
PK NAIL IN 12" PALM TREE	S 79°26'56" E	33.80'
PK NAIL IN 11" PALM TREE	S 37°49'04" W	22.17'
PK & DISK 0315 IN CL	S 37°38'20" E	164.03'
	(S 37°37'53" E GRID)	

SURVEYORS CERTIFICATE: I certify the monument and accessories indicated above were field located on SEPTEMBER 14, 19 93.

R. Ros PLS 4260
 SIGNATURE

7-19-94
 DATE

CHARLOTTE COUNTY SURVEY DEPT.
 FIRM OR AGENCY

7000 FLORIDA STREET
 ADDRESS

PUNTA GORDA, FLA. 33950
 CITY STATE

RECEIVED
 JUL 22 1994
 SURVEY & MAPPING



SEND TO: 509

Completeness checked by: B. Sinton
 Accepted and filed: 8-1-94
 B.L.M. - I.D. 33CLO500 Date
 D.N.R. USE ONLY

Department of Natural Resources
 Bureau of Survey and Mapping
 3900 Commonwealth Boulevard
 Mall Station 105
 Tallahassee, Florida 32399

DNR 53-001(16)
 REV. 7/16/92
 PAGE 2 OF 2