

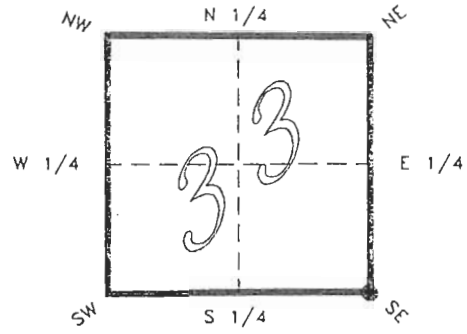
4023Z13

FLORIDA DEPARTMENT OF NATURAL RESOURCES
CERTIFIED CORNER RECORD

213

CORNER DESCRIPTION:

S.E. corner of Section 33 ,
Twp 40 S. , Rge 23 E. ,
Tallahassee Base Meridian,
CHARLOTTE County(s), Florida.



Depict corner with

MONUMENTATION DESCRIPTION:

Describe original monument and accessories, or subsequent restoration. Give sources of information. (If no attempt was made to search for the original monument and accessories, this information is not necessary.)

Description of corner evidence found:

IRON ROD, REPLACED WITH CONCRETE MONUMENT

State method(s) to determine corner location (lost corners only):

HORIZONTAL POSITION INFORMATION (if determined):

Latitude 26°56'50.29656" Longitude 82°00'31.98576"
Y(Northing) 289565.612 m X(Easting) 199117.768 m Zone FLW
Convergence -0°00'14.495" Scale factor 0.99994118

Coordinate determination (circle one): Field traverse GPS

Horizontal datum (circle one): NAD27 NAD83(1986) NAD83(1990) other (explain)

Order of accuracy as defined in "Standards and Specifications for Geodetic Control Networks" published by the Federal Geodetic Control Committee (circle one):
1st, 2nd, 3rd, class 1 ,

or Minimum Technical Standards (Chapter 21HH-6, F.A.C.) ratio of closure for field data (example 1:10,000), _____ . This does not specify an order of accuracy.

Control point(s) used for survey: *CHARLOTTE COUNTY HORIZONTAL CONTROL NETWORK INCLUDES HAVOLINE 2, PLACIDA 2, W260, PUNTAPORT, & FLGPS 58 AS B ORDER STATIONS.*

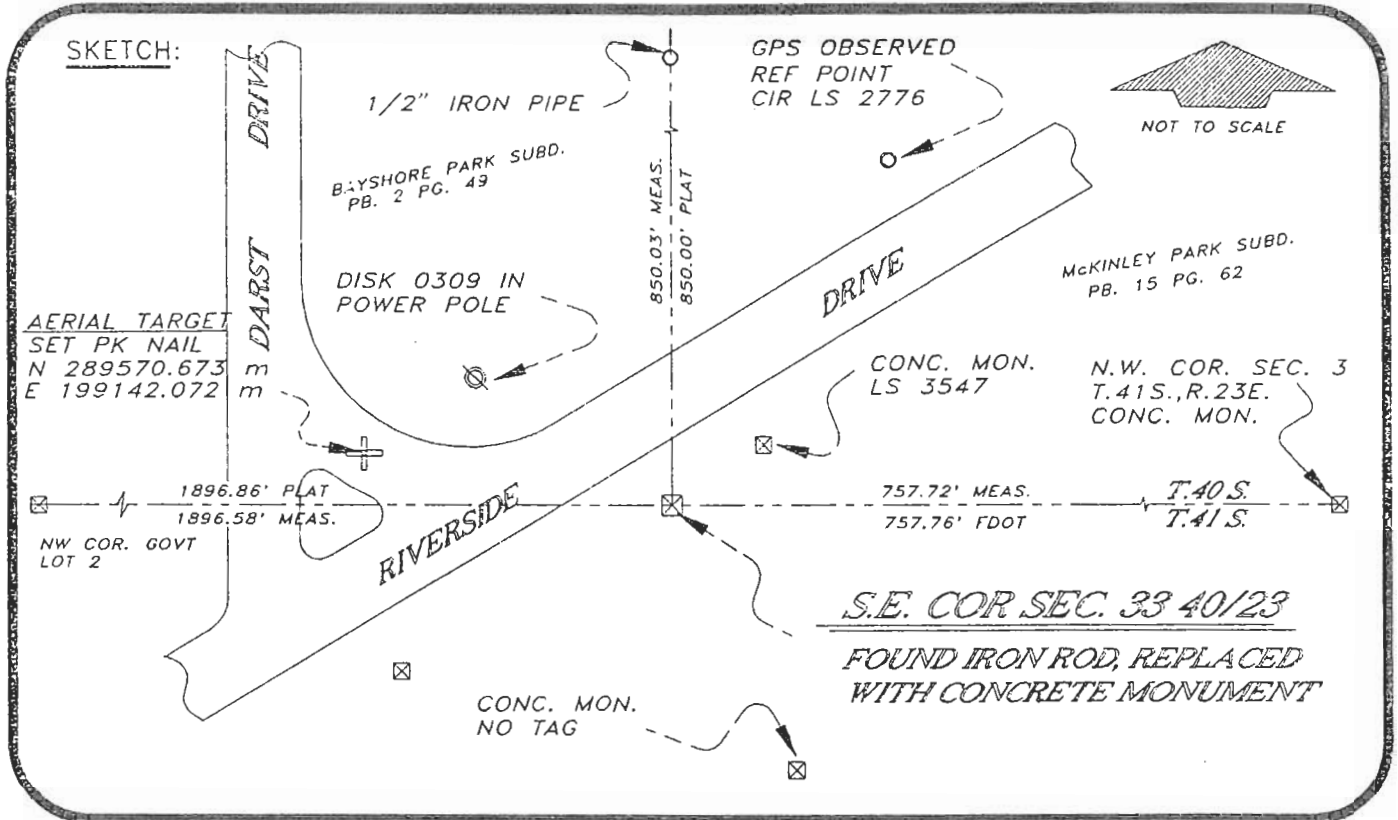
Comments:

RECEIVED
APR 21 1995

052708

4023Z13

DOC. #



BASIS OF BEARING SOLAR OBSERVATION

REFER FB 251/80

All bearings and distances must be from the corner to the witness. Indicate whether corner was found, set, or replaced and show north arrow.

SET SURVEY MARKER POST 3' E'LY

REFERENCE MEASUREMENTS (at least three vicinity references must be given below even if they appear on the above sketch):

Description	Bearing	Distance
CONC. MON. NO TAG	S 20°01'05" E	68.74'
CONC. MON. LS 3547	N 47°17'55" E	17.64'
DISK 0309 IN POWER POLE	N 62°11'48" W	52.98'
REF. PT. CIR LS 2776	N 29°05'47" E	152.21'
	(N 29°06'01" E GRID)	
PK NAIL AT AERIAL TARGET	N 81°56'52" W	118.29'

SURVEYORS CERTIFICATE: I certify the monument and accessories indicated above were field located on JULY 12, 19 93.

[Signature] PLS 4260
SIGNATURE
JULY 19, 1995
DATE

CORRECTION TO
E. COORD.
7/19/95



CHARLOTTE COUNTY SURVEY DEPT.
FIRM OR AGENCY
7000 FLORIDA STREET
ADDRESS
PUNTA GORDA, FLA. 33950
CITY STATE

509
Punta
Gorda

Completeness checked by: B. Benl
Accepted and filed: 8-1-95
Date
B.L.M. - I.D. 00339400 D.N.R. USE ONLY

SEND TO:
Department of Natural Resources
Bureau of Survey and Mapping
3900 Commonwealth Boulevard
Mail Station 105
Tallahassee, Florida 32399
DNR 53-001(16)
REV. 7/16/92
PAGE 2 OF 2