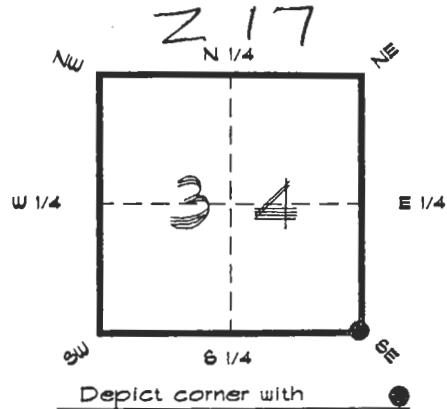


4023Z17

FLORIDA DEPARTMENT OF ENVIRONMENTAL PROTECTION
CERTIFIED CORNER RECORD

CORNER DESCRIPTION:

S. E. corner of Section 34,
 Twp 40 S., Rge 23 E.,
 Tallahassee Base Meridian,
CHARLOTTE County(s), Florida.



MONUMENTATION DESCRIPTION:

Describe original monument and accessories, or subsequent restoration. Give sources of information. (If no attempt was made to search for the original monument and accessories, this information is not necessary.)

Description of corner evidence found:
IRON BAR 0.1' BELOW ASPHALT

State method(s) to determine corner location (lost corners only):

HORIZONTAL POSITION INFORMATION (if determined):

Latitude 26°56'49.85269" N Longitude 81°59'33.20119" W
 Y(Northing) 289551.942 m X(Easting) 200739.166 m Zone FLW
 Convergence 0°00'12.144" Scale factor 0.99994118

Coordinate determination (circle one): Field traverse GPS

Horizontal datum (circle one): NAD27 NAD83(1986) NAD83(1990) other (explain)

Order of accuracy as defined in Standards and Specifications for Geodetic Control Networks published by the Federal Geodetic Control Committee (circle one):
 1st, 2nd, 3rd class _____

or Minimum Technical Standards (Chapter 61G17, F.A.C.) ratio of closure for field data (example 1:10,000), _____ . This does not specify an order of accuracy.

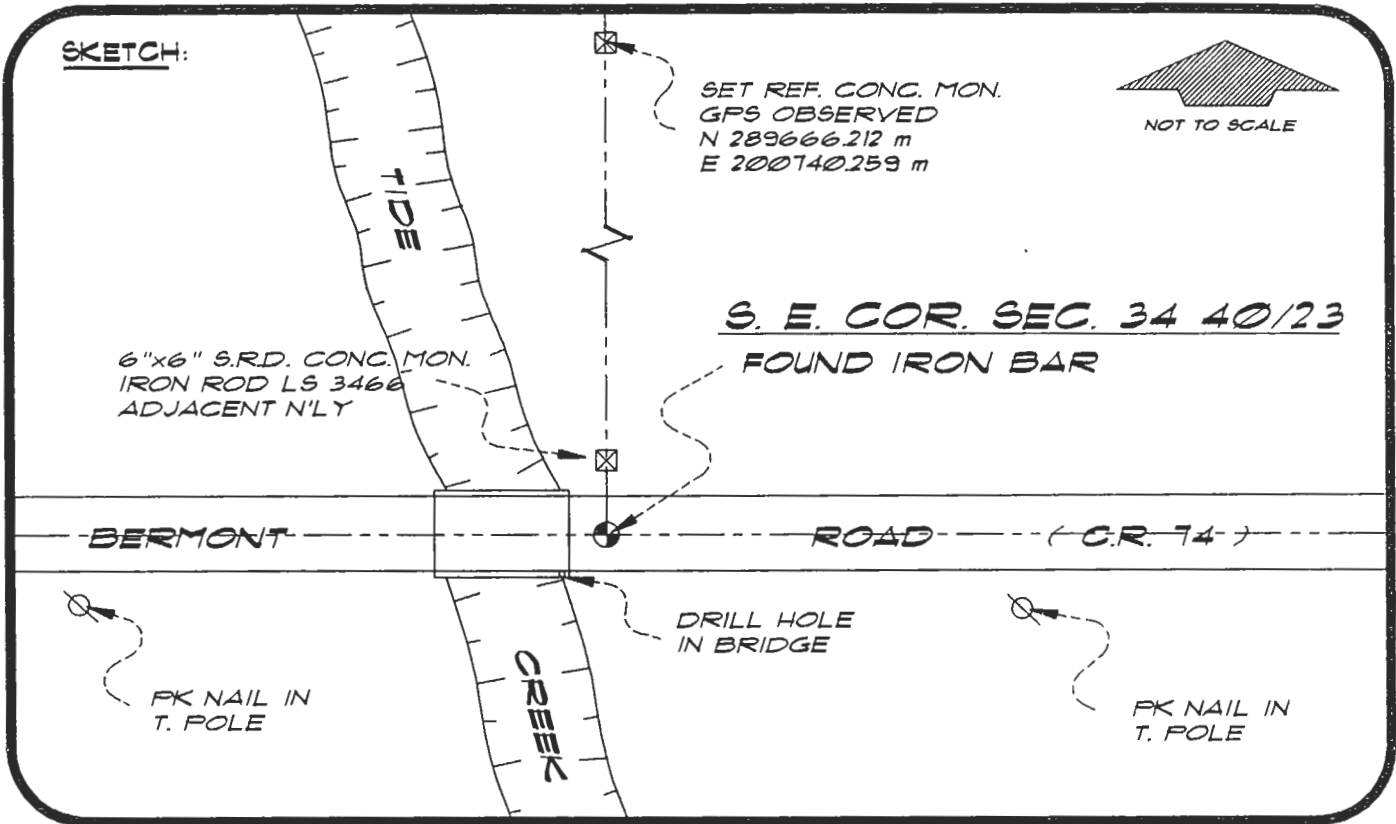
Control point(s) used for survey: CHARLOTTE COUNTY HORIZONTAL CONTROL NETWORK INCLUDES HAYOLINE 2, FLACIDA 2, W260, PUNTPORT, & FLGPS 58 AS B ORDER STATIONS.

Comments:

4023Z17

DOC. #

0049172



BASIS OF BEARING SOLAR OBSERVATION REFER: FB 30/1/63

REFERENCE MEASUREMENTS

Description	Bearing	Distance
6"X6" S.R.D. CONC. MON.	N 00°27'05" E	49.59'
FK NAIL IN TELEPHONE POLE	S 75°16'22" E	177.95'
FK NAIL IN TELEPHONE POLE	S 71°00'38" W	135.92'
DRILL HOLE IN BRIDGE	S 43°19'01" W	20.42'
SET REF. CONC. MON.	N 00°33'05" E	374.94'
	(N 00°32'53" E GRID)	

SURVEYORS CERTIFICATE: I certify the monument and accessories indicated above were field located on JUNE 27, 1994

R. P. Rose PLS 4260
 SIGNATURE
 7-19-94
 DATE
 CHARLOTTE COUNTY SURVEY DEPT.
 FIRM OR AGENCY
 1000 FLORIDA STREET
 ADDRESS
 PUNTA GORDA, FLORIDA 33950
 CITY STATE



Completeness checked by: B. J. Linton
 Accepted and filed: 8-17-94
 Date
 BLM. - ID. 00343500 D.E.P. USE ONLY

SEND TO:
 Department of Environmental Protection
 Bureau of Survey and Mapping
 3900 Commonwealth Boulevard
 Mall Station 105
 Tallahassee, Florida 32399

508