

4023Z21

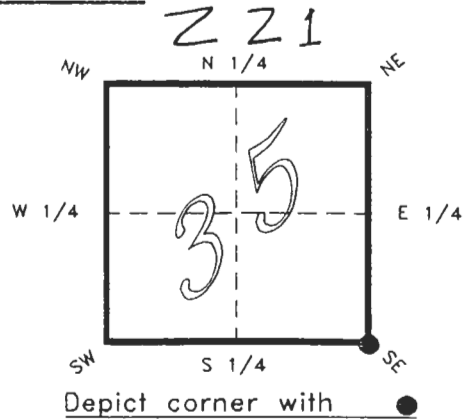
DOC. #

0048026

FLORIDA DEPARTMENT OF ENVIRONMENTAL PROTECTION
CERTIFIED CORNER RECORD

CORNER DESCRIPTION:

S.E. corner of Section 35 ,
Twp 40 S. , Rge 23 E. ,
Tallahassee Base Meridian,
CHARLOTTE County(s), Florida.



MONUMENTATION DESCRIPTION:

Describe original monument and accessories, or subsequent restoration. Give sources of information. (If no attempt was made to search for the original monument and accessories, this information is not necessary.)

Description of corner evidence found:

NAIL & TAB

State method(s) to determine corner location (lost corners only):

HORIZONTAL POSITION INFORMATION (if determined):

Latitude 26°56'49.38535" N Longitude 81°58'33.42470" W
Y(Northing) 289537.764 m X(Easting) 202387.927 m Zone FLW
Convergence 0°00'39.233" Scale factor 0.99994125

Coordinate determination (circle one): Field traverse GPS
Horizontal datum (circle one): NAD27 NAD83(1986) NAD83(1990) other (explain)

Order of accuracy as defined in "Standards and Specifications for Geodetic Control Networks" published by the Federal Geodetic Control Committee (circle one):
1st, 2nd, 3rd, class 1 ,

or Minimum Technical Standards (Chapter 21HH-6, F.A.C.) ratio of closure for field data (example 1:10,000), _____ . This does not specify an order of accuracy.

Control point(s) used for survey: CHARLOTTE COUNTY HORIZONTAL CONTROL NETWORK INCLUDES HAVOLINE 2, PLACIDA 2, W260, PUNTPORT, & FLGPS 58 AS B ORDER STATIONS.

Comments:

RECEIVED

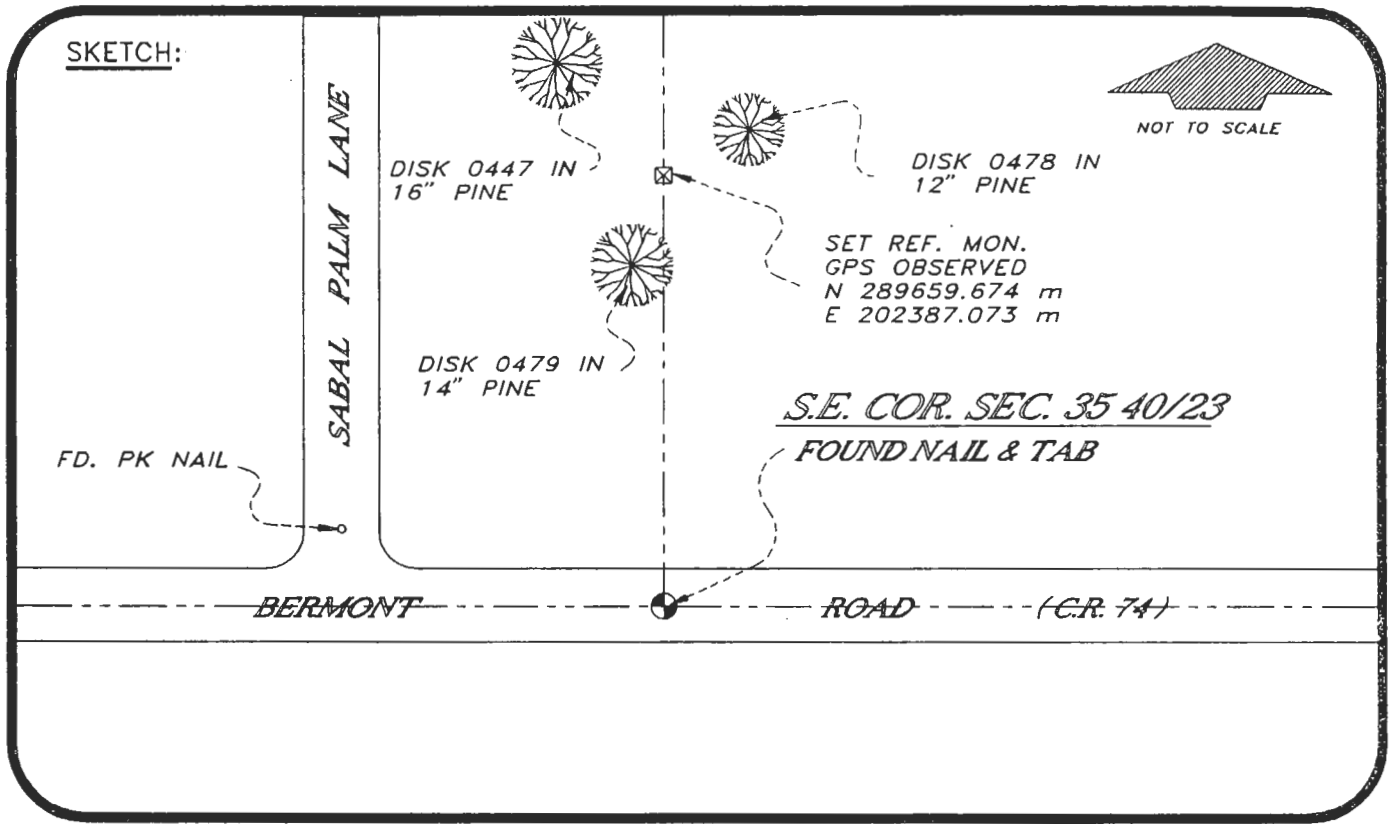
MAR 23 1994

SURVEY & MAPPING

4023Z21

DOC. #

0048023



BASIS OF BEARING SOLAR OBSERVATION REFER: FB 251/77

REFERENCE MEASUREMENTS

Description	Bearing	Distance
DISK 0477 IN 16" PINE	N 06°58'53" W	457.58'
DISK 0478 IN 12" PINE	N 04°54'48" E	420.72'
DISK 0479 IN 14" PINE	N 03°27'58" W	370.58'
FOUND PK NAIL	N 72°43'15" W	173.15'
REF. CONC. MONUMENT (GPS OBSERVED)	N 00°23'26" W (N 00°24'05" W GRID)	400.00'

SURVEYORS CERTIFICATE: I certify the monument and accessories indicated above were field located on MARCH 15, 19 93.

R. P. Rose
SIGNATURE PLS 4260

3-17-94
DATE

CHARLOTTE COUNTY SURVEY DEPT.
FIRM OR AGENCY

7000 FLORIDA STREET
ADDRESS

PUNTA GORDA, FLA. 33950
CITY STATE

508



Completeness checked by: *B. Dinton*

Accepted and filed: *4-1-94*

B.L.M. - I.D. 00353600 Date *4-1-94* D.N.R. USE ONLY

SEND TO:
Department of Environmental Protection
Bureau of Survey and Mapping
3900 Commonwealth Boulevard
Mail Station 105
Tallahassee, Florida 32399