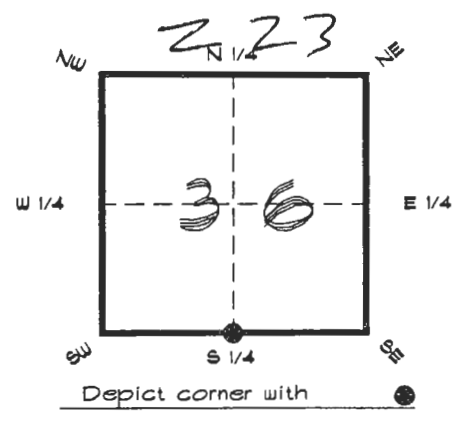


4023Z23

FLORIDA DEPARTMENT OF ENVIRONMENTAL PROTECTION
CERTIFIED CORNER RECORD

CORNER DESCRIPTION:

S. 1/4 corner of Section 36 ,
Twp 40 S. , Rge 23 E. ,
Tallahassee Base Meridian,
CHARLOTTE County(s), Florida.



MONUMENTATION DESCRIPTION:

Describe original monument and accessories, or subsequent restoration. Give sources of information. (If no attempt was made to search for the original monument and accessories, this information is not necessary.)

Description of corner evidence found:
NAIL AND DISK ON SURFACE

State method(s) to determine corner location (lost corners only):

HORIZONTAL POSITION INFORMATION (if determined):

Latitude 26°56'49.15510" N Longitude 81°58'04.28541" W

Y(Northing) 289530.856 m X(Easting) 203191.651 m Zone FLW

Convergence 0°00'52.438" Scale factor 0.99994130

Coordinate determination (circle one): Field traverse GPS

Horizontal datum (circle one): NAD27 NAD83(1986) NAD83(1990) other (explain)

Order of accuracy as defined in Standards and Specifications for Geodetic Control Networks published by the Federal Geodetic Control Committee (circle one):
1st, 2nd, 3rd, class _____

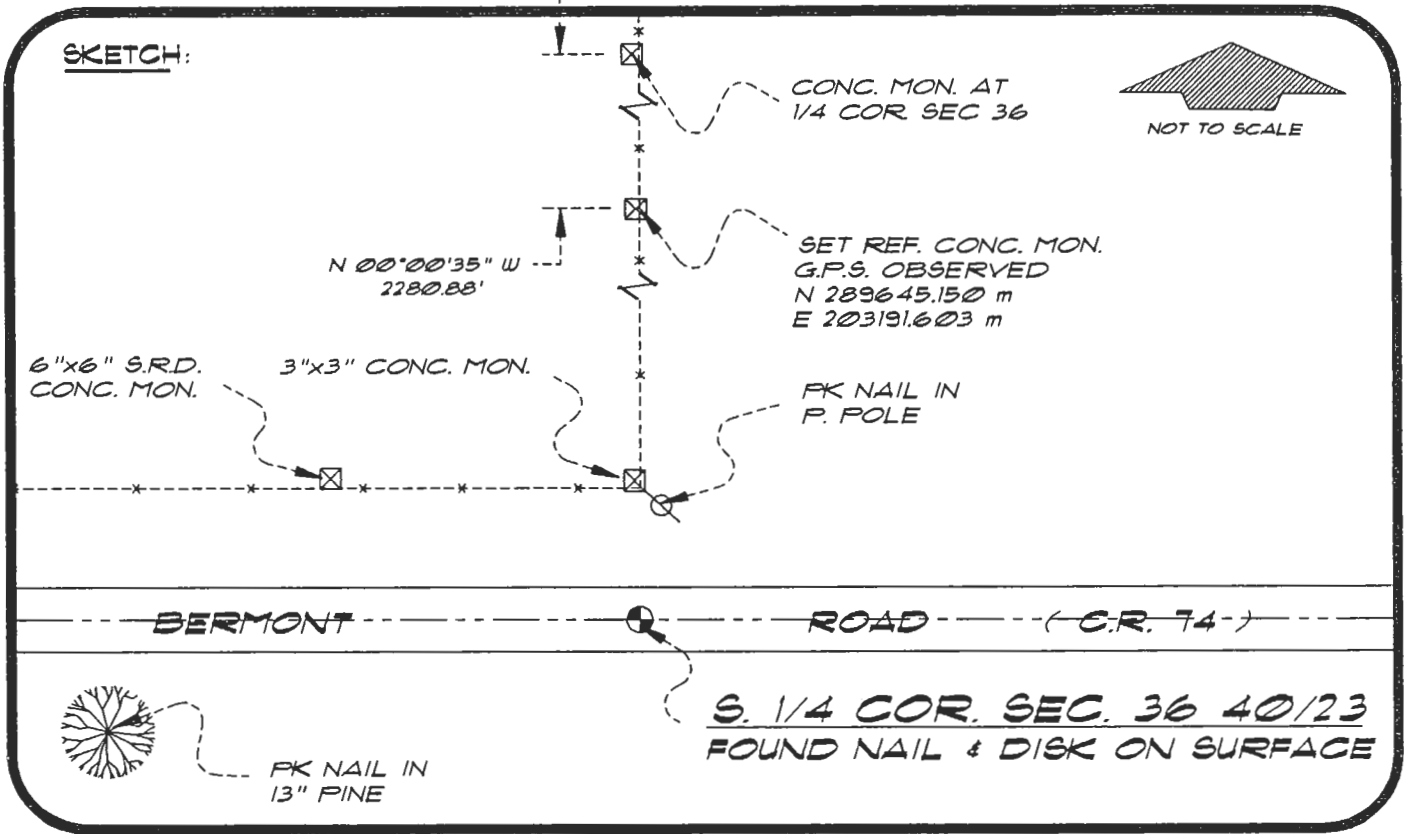
or Minimum Technical Standards (Chapter 61G17, F.A.C.) ratio of closure for field data (example 1:10,000), _____ . This does not specify an order of accuracy.

Control point(s) used for survey: CHARLOTTE COUNTY HORIZONTAL CONTROL NETWORK INCLUDES HAYOLINE 2, FLAGIDA 2, W260, PUNTPORT, & FLGPS 58 AS B ORDER STATIONS.

Comments:

4023Z23

DOC. #



BASIS OF BEARING GPS OBSERVATION

REFER: FB 30/160

REFERENCE MEASUREMENTS

Description	Bearing	Distance
FK NAIL IN P. POLE	N 03°50'05" E	46.94'
3"x3" CONC. MON.	N 00°01'27" W	50.00'
6"x6" S.R.D. CONC. MON.	N 59°29'10" W	98.91'
FK NAIL IN 13" PINE	S 64°28'24" W	124.94'
SET REF. CONC. MON.	N 00°00'35" W	375.00'
	(N 00°01'27" W GRID)	

SURVEYORS CERTIFICATE: I certify the monument and accessories indicated above were field located on JUNE 21, 1994

R. Rose FLS 4260
SIGNATURE

7-19-94
DATE

CHARLOTTE COUNTY SURVEY DEPT.
FIRM OR AGENCY

1000 FLORIDA STREET
ADDRESS

PUNTA GORDA, FLORIDA 33950
CITY STATE

RECEIVED

JUL 22 1994

SURVEY & MAPPING



Completeness checked by: B. Jinton

Accepted and filed: 8-1-94
Date

BLM. - ID. 36CLO500 D.E.P. USE ONLY

SEND TO:
Department of Environmental Protection
Bureau of Survey and Mapping
3900 Commonwealth Boulevard
Mail Station 105
Tallahassee, Florida 32399

508