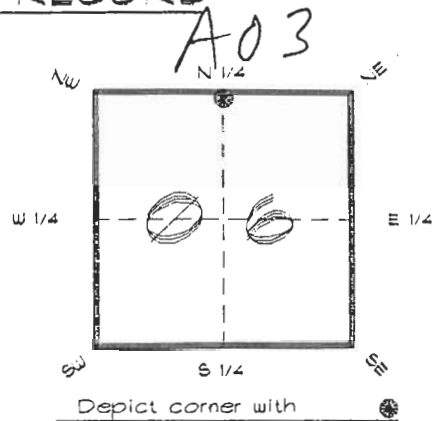


4024A03

**FLORIDA DEPARTMENT OF ENVIRONMENTAL PROTECTION**  
**CERTIFIED CORNER RECORD**

CORNER DESCRIPTION:

N. 1/4 corner of Section 6  
Twp 40 S., Rge 24 E.  
Tallahassee Base Meridian,  
CHARLOTTE County(s), Florida.  
DESOTO



MONUMENTATION DESCRIPTION:

Describe original monument and accessories, or subsequent restoration. Give sources of information. (If no attempt was made to search for the original monument and accessories, this information is not necessary.)

Description of corner evidence found:

4"x4" CONCRETE MONUMENT L.S. 3421 ( 0.71' N & 0.19' W OF CALC. SINGLE PROPORTION HOLDING R.R. SPIKE AND 2 1/2 " I. PIPE)

State method(s) to determine corner location (lost corners only):

HORIZONTAL POSITION INFORMATION ( if determined ):

Latitude 27°02'05.99136" N Longitude 81°56'53.41512" W  
Y(Northing) 299282.748 m X(Easting) 205142.399 m Zone FLW  
Convergence 0°01'24.809" Scale factor 0.99994150

Coordinate determination (circle one): Field traverse   GPS

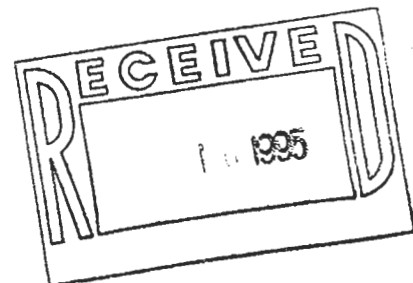
Horizontal datum (circle one): NAD27 NAD83(1986)  NAD83(1990) other (explain)

Order of accuracy as defined in Standards and Specifications for Geodetic Control Networks published by the Federal Geodetic Control Committee (circle one): 1st,  2nd, 3rd, class \_\_\_\_\_

or Minimum Technical Standards (Chapter 61G17, F.A.C.) ratio of closure for field data (example 1:10,000), \_\_\_\_\_ . This does not specify an order of accuracy.

Control point(s) used for survey: CHARLOTTE COUNTY HORIZONTAL CONTROL NETWORK INCLUDES HAVOLINE 2, PLACIDA 2, W260, PUNTPORT, & FLGPS 58 AS B ORDER STATIONS.

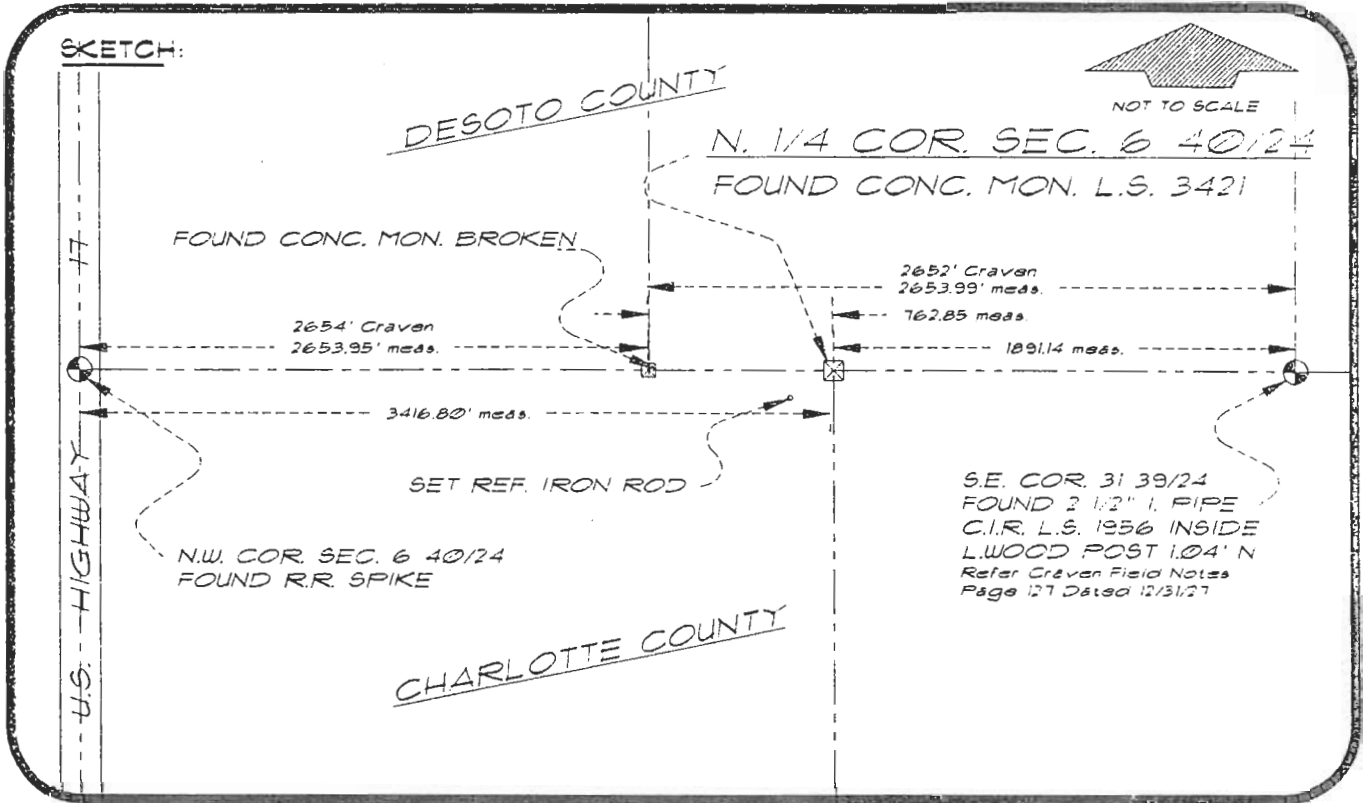
Comments:



4024A03

DOC. #

051323



BASIS OF BEARING SOLAR OBSERVATION  
 SET SURVEY MARKER POST 3.0' N'LY

REFER: FB 304/58

REFERENCE MEASUREMENTS

Description	Bearing	Distance
CONC. MON. BROKEN	N 89°42'05" W	765.85'
FOUND R.R. SPIKE	N 89°41'00" W	3416.80'
SET REF. IRON ROD	S 51°20'30" W	86.96'
FOUND 2 1/2" I. PIPE	S 89°39'00" E	1891.14'

SURVEYORS CERTIFICATE: I certify the monument and accessories indicated above were field located on MARCH 25, 1994.

*R. P. Rose*  
 SIGNATURE

PLS 4260

3/7/95  
 DATE

CHARLOTTE COUNTY SURVEY DEPT.  
FIRM OR AGENCY  
 7000 FLORIDA STREET  
ADDRESS  
 PUNTA GORDA, FLORIDA 33950  
CITY STATE

546  
 Ft.  
 0605N



Completeness checked by: *B. Lente*  
 Accepted and filed: *4-1-95*  
 Date  
 BLM. - ID. *06CLO051* DEP USE ONLY  
 NOO

SEND TO:

Department of Environmental Protection  
 Bureau of Survey and Mapping  
 3900 Commonwealth Boulevard  
 Mail Station 105  
 Tallahassee, Florida 32399