

4024A05

DOC. #

051055

**FLORIDA DEPARTMENT OF ENVIRONMENTAL PROTECTION  
CERTIFIED CORNER RECORD**

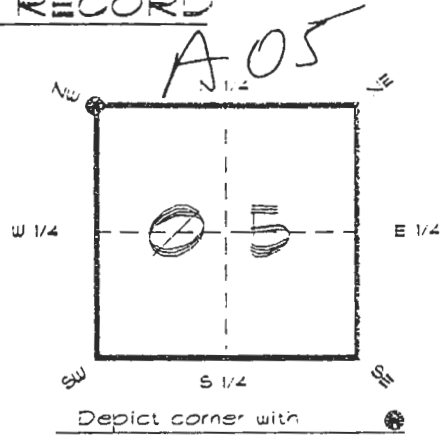
CORNER DESCRIPTION:

N. W. corner of Section 5

Twp 40 S., Rge 24 E.

Tallahassee Base Meridian,

CHARLOTTE County(s), Florida.  
DESOTO



MONUMENTATION DESCRIPTION:

Describe original monument and accessories, or subsequent restoration. Give sources of information. (If no attempt was made to search for the original monument and accessories, this information is not necessary.)

Description of corner evidence found:

SET CONCRETE MONUMENT BY SINGLE PROPORTION

State method(s) to determine corner location (lost corners only):

HORIZONTAL POSITION INFORMATION ( if determined ):

Latitude 27°02'05.81964" N Longitude 81°56'24.06006" W

Y(Northing) 299277.821 m X(Easting) 205951.446 m Zone FLW

Convergence 0°01'38.152" Scale factor 0.99994161

Coordinate determination (circle one): Field traverse GPS

Horizontal datum (circle one): NAD27 NAD83(1986) NAD83(1990) other (explain)

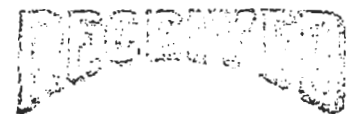
Order of accuracy as defined in Standards and Specifications for Geodetic Control Networks published by the Federal Geodetic Control Committee (circle one):

1st, 2nd, 3rd class \_\_\_\_\_

or Minimum Technical Standards (Chapter 6IG17, F.A.C.) ratio of closure for field data (example 1:10,000), \_\_\_\_\_ . This does not specify an order of accuracy.

Control point(s) used for survey: CHARLOTTE COUNTY HORIZONTAL CONTROL NETWORK INCLUDES HAYOLINE 2, PLACIDA 2, W260, PUNTPORT, 4 FLGPS 58 AS B ORDER STATIONS.

Comments:



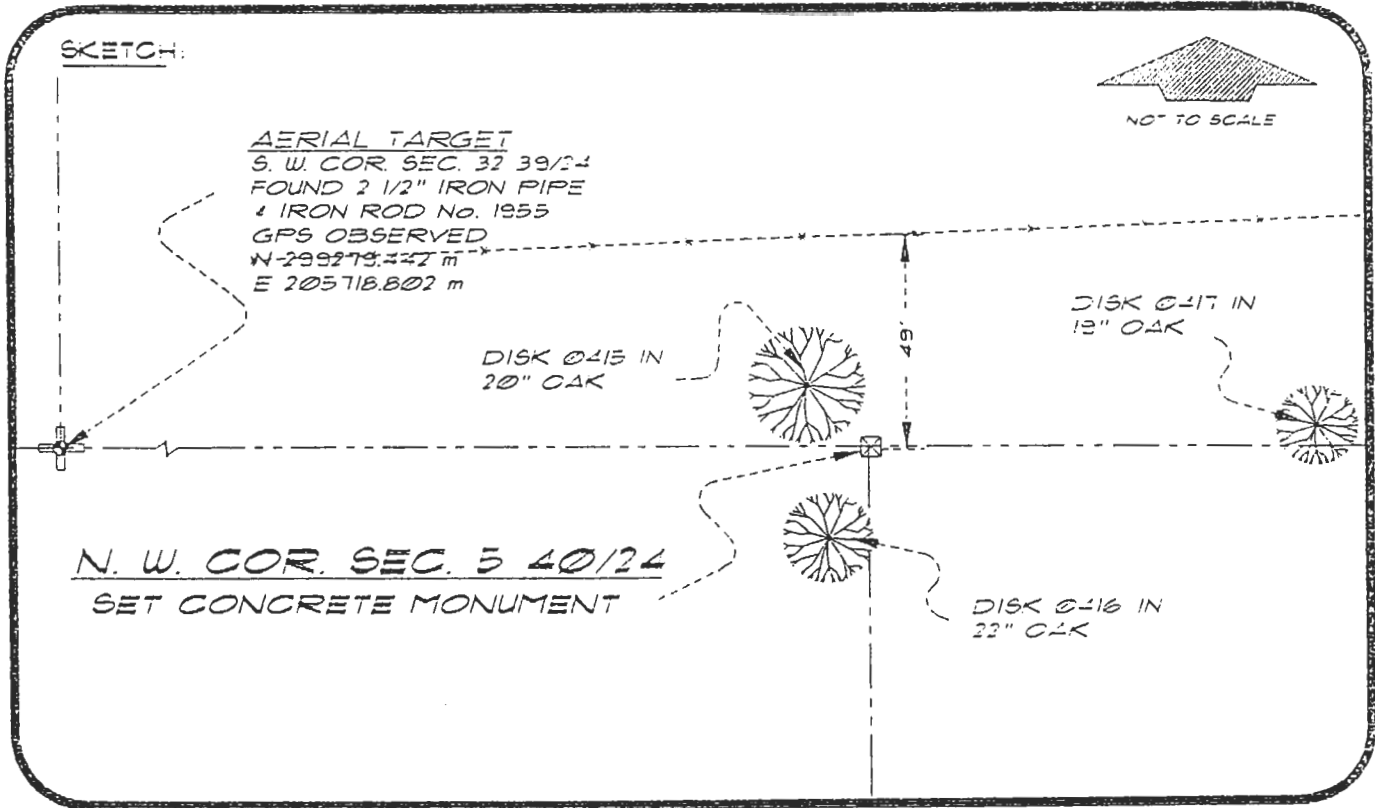
FEB 20 1995

SURVEY & MAPPING

4024A05

DOC. #

051055



BASIS OF BEARING SOLAR OBSERVATION  
SET SURVEY MARKER POST 3.0' N'LY

REFER: FB 304/53

REFERENCE MEASUREMENTS

Description	Bearing	Distance
DISK Ø415 IN 20" OAK	N 51°02'59" W	13.30'
DISK Ø417 IN 19" OAK	N 88°43'39" E	123.09'
DISK Ø416 IN 22" OAK	S 32°19'17" W	22.60'
S.W. COR. SEC. 32 39/40 (GPS OBSERVED)	N 89°34'29" W N 89°36'03" W	764.90' GRID

SURVEYORS CERTIFICATE: I certify the monument and accessories indicated above were field located on MARCH 21, 1994

*R. Rose*  
SIGNATURE

PLS 4260

UPDATED 2/8/95

2-15-95  
DATE

CHARLOTTE COUNTY SURVEY DEPT.  
FIRM OR AGENCY

7000 FLORIDA STREET  
ADDRESS

PUNTA GORDA, FLORIDA 33950  
CITY STATE

Completeness checked by: *R. Rose*  
 Accepted and filed: 3-1-95 Date  
 BLM - ID. 06000005 DEP. USE ONLY

546



SEND TO:

Department of Environmental Protection  
Bureau of Survey and Mapping  
3900 Commonwealth Boulevard  
Mail Station 105  
Tallahassee, Florida 32399