

4024A09

**FLORIDA DEPARTMENT OF ENVIRONMENTAL PROTECTION  
CERTIFIED CORNER RECORD**

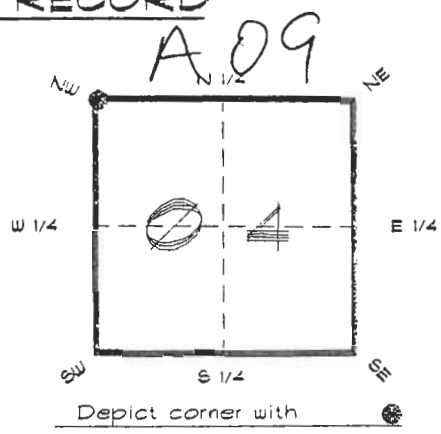
CORNER DESCRIPTION:

N. W corner of Section 4

Twp 40 S. , Rge 24 E.

Tallahassee Base Meridian,

CHARLOTTE County(s), Florida.  
DESOTO



MONUMENTATION DESCRIPTION:

Describe original monument and accessories, or subsequent restoration. Give sources of information. (If no attempt was made to search for the original monument and accessories, this information is not necessary.)

Description of corner evidence found:

SET CONCRETE MONUMENT BY SINGLE PROPORTION

State method(s) to determine corner location (lost corners only):

HORIZONTAL POSITION INFORMATION ( if determined ):

Latitude 27°02'05.41864" N Longitude 81°55'25.28002" W

Y(Northing) 299266.356 m X(Easting) 207571.471 m Zone FLW

Convergence 0°02'04.869" Scale factor 0.999994188

Coordinate determination (circle one):      Field traverse      GPS

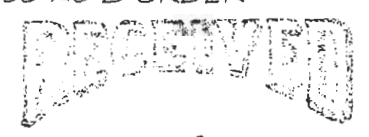
Horizontal datum (circle one): NAD27 NAD83(1986) NAD83(1990) other (explain)

Order of accuracy as defined in Standards and Specifications for Geodetic Control Networks published by the Federal Geodetic Control Committee (circle one):  
1st, 2nd, 3rd, class \_\_\_\_\_

or Minimum Technical Standards (Chapter 61G17, F.A.C.) ratio of closure for field data (example 1:10,000), \_\_\_\_\_ . This does not specify an order of accuracy.

Control point(s) used for survey: CHARLOTTE COUNTY HORIZONTAL CONTROL NETWORK INCLUDES HAVOLINE 2, PLACIDA 2, W260, PUNTPORT, & FLGPS 58 AS B ORDER STATIONS.

Comments:

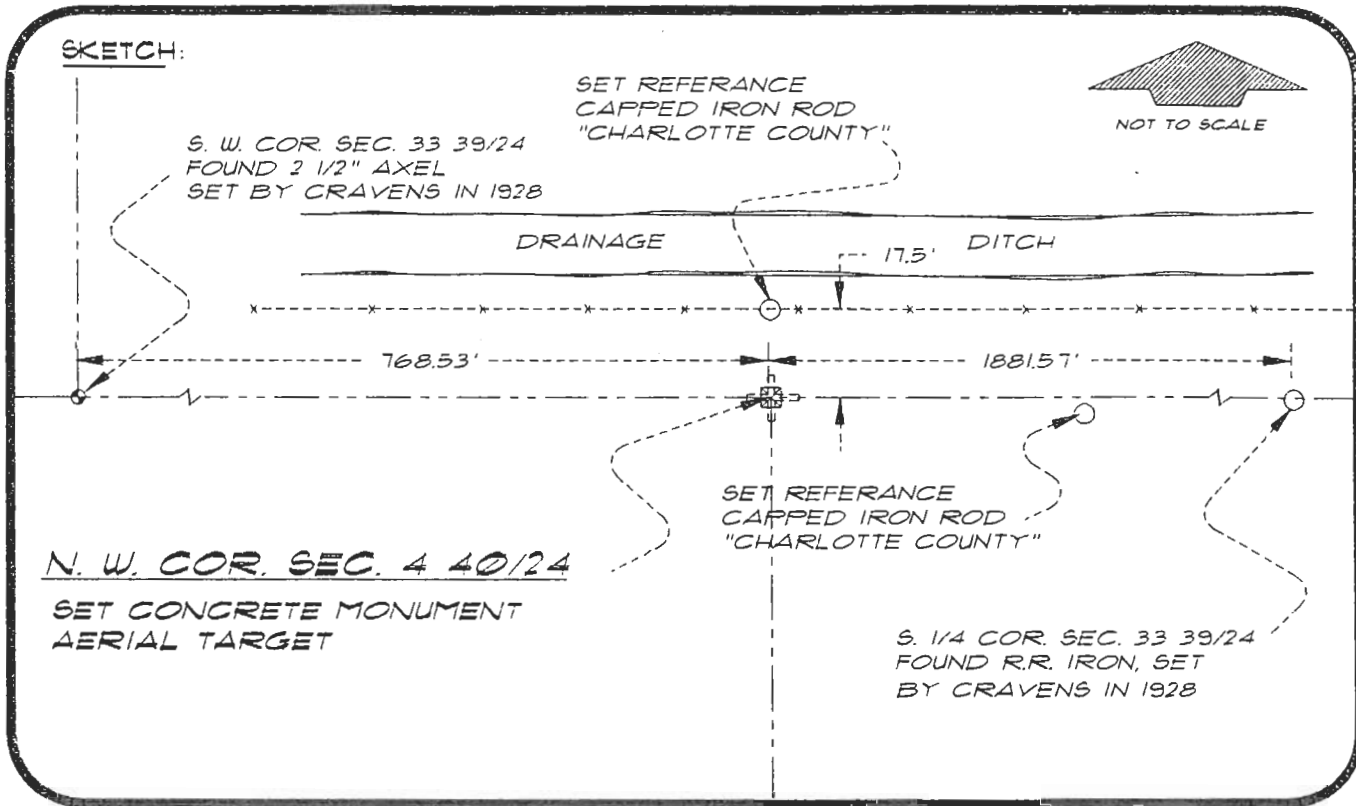


FEB 20 1995

4024A09

DOC. #

051054



BASIS OF BEARING SOLAR OBSERVATION REFER: FB 304/56

SET SURVEY MARKER POST 3.0' N'LY  
REFERENCE MEASUREMENTS

Description	Bearing	Distance
S.W. COR. SEC. 33 39/24	N 89°33'11" W	768.53'
SET REF. IRON ROD	N 02°37'54" E	17.98'
SET REF. IRON ROD	S 88°24'36" E	97.35'

**SURVEYORS CERTIFICATE:** I certify the monument and accessories indicated above were field located on MARCH 25, 1994.

*R. Ross*  
SIGNATURE

PLS 4260

UPDATED 2/7/95

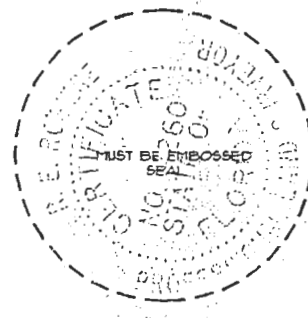
2-15-95  
DATE

CHARLOTTE COUNTY SURVEY DEPT.  
FIRM OR AGENCY

1000 FLORIDA STREET  
ADDRESS

PUNTA GORDA, FLORIDA 33950  
CITY STATE

546



Completeness checked by: *B. Hinton*

Accepted and filed: 3-1-95 Date

BLM - ID. 05060004 DEP. USE ONLY

SEND TO:

Department of Environmental Protection  
Bureau of Survey and Mapping  
3900 Commonwealth Boulevard  
Mail Station 105  
Tallahassee, Florida 32399