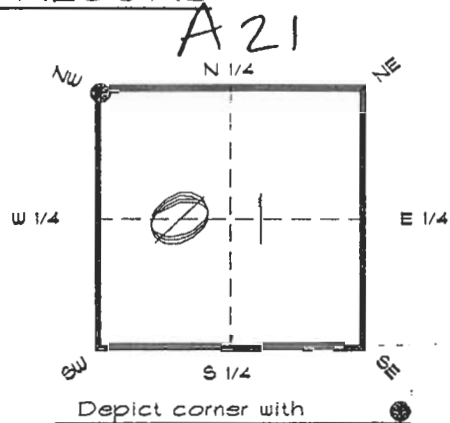


FLORIDA DEPARTMENT OF ENVIRONMENTAL PROTECTION
CERTIFIED CORNER RECORD

CORNER DESCRIPTION:

N. W. corner of Section 1,
Twp 40 S., Rge 24 E.,
Tallahassee Base Meridian,

CHARLOTTE County(s), Florida.
DESOTO



MONUMENTATION DESCRIPTION:

Describe original monument and accessories, or subsequent restoration. Give sources of information. (If no attempt was made to search for the original monument and accessories, this information is not necessary.)

Description of corner evidence found:

SET CONCRETE MONUMENT BY SINGLE PROPORTION FROM
C. L. CRAVEN (FORMER COUNTY SURVEYOR DESOTO
COUNTY) FIELD NOTES, USING S. W. & S. E. CORNS. SEC. 36 39/24

State method(s) to determine corner location (lost corners only):

HORIZONTAL POSITION INFORMATION (if determined):

Latitude 27°02'04.36705" N Longitude 81°52'29.41669" W
Y(Northing) 299237.864 m X(Easting) 212418.420 m Zone FLW
Convergence 0°03'24.803" Scale factor 0.99994308

Coordinate determination (circle one): Field traverse GPS

Horizontal datum (circle one): NAD27 NAD83(1986) NAD83(1990) other (explain)

Order of accuracy as defined in Standards and Specifications for Geodetic Control Networks published by the Federal Geodetic Control Committee (circle one):
1st, 2nd, 3rd, class 1

or Minimum Technical Standards (Chapter 61G17, F.A.C.) ratio of closure for field data (example 1:10,000), . This does not specify an order of accuracy.

Control point(s) used for survey: CHARLOTTE COUNTY HORIZONTAL CONTROL NETWORK INCLUDES HAYOLINE 2, PLACIDA 2, W260, PUNTPORT, & FLGPS 58 AS B ORDER STATIONS.

Comments:

RECEIVED

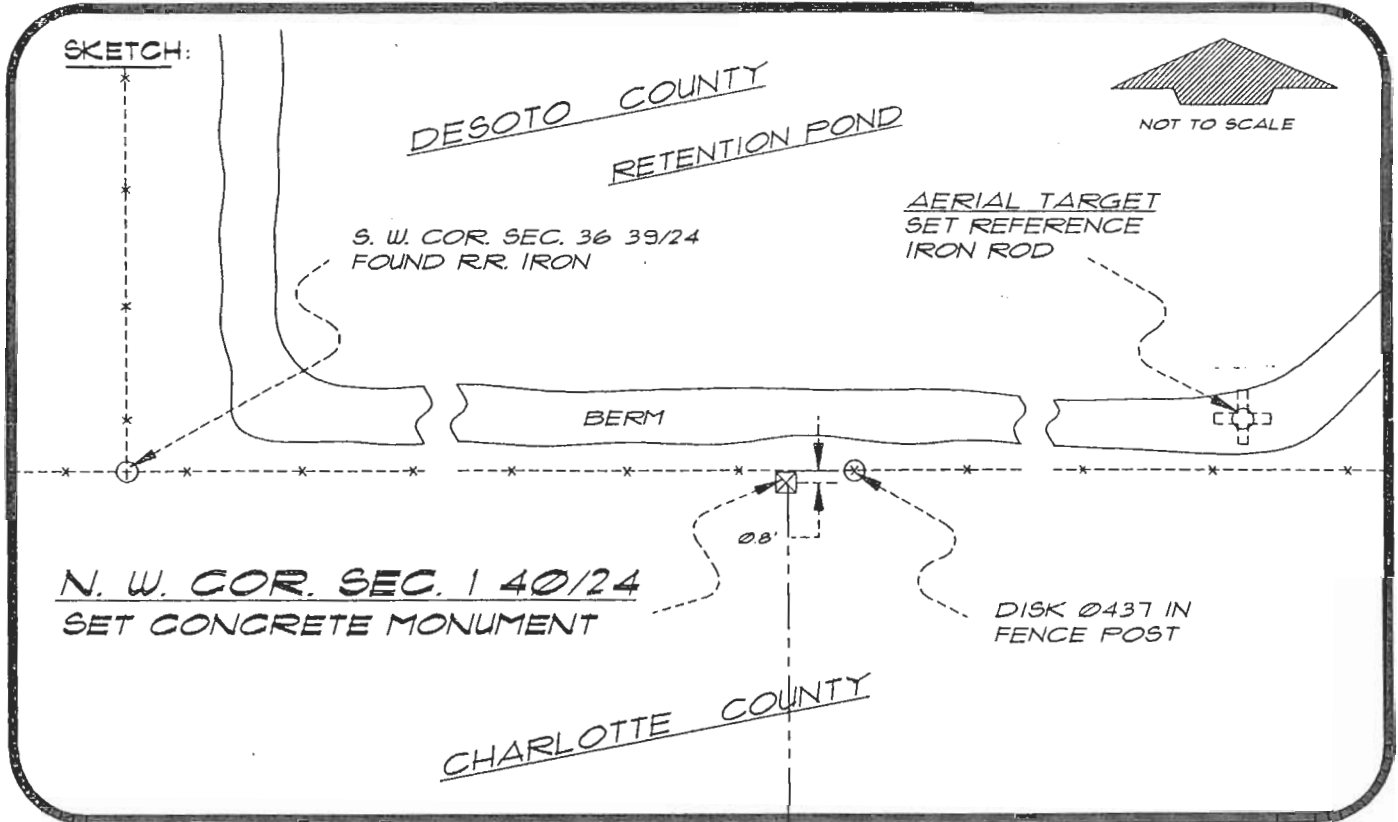
APR 14 1995

SURVEY & MAPPING

4024A21

DOC. #

051547



BASIS OF BEARING SOLAR OBSERVATION REFER: FB 304/64
 SET SURVEY MARKER POST 3.0' N'LY

REFERENCE MEASUREMENTS

<u>Description</u>	<u>Bearing</u>	<u>Distance</u>
DISK Ø437 IN FENCE POST	N 82°40'03" E	5.06'
SET REF. IRON ROD	N 81°54'30" E	197.98'
S.W. COR. SEC. 36 39/40	N 89°33'05" W	760.57'

SURVEYORS CERTIFICATE: I certify the monument and accessories indicated above
 were field located on MAY 18, 1994

R. P. Roso

PLS 4260

SIGNATURE

4/11/95

DATE

CHARLOTTE COUNTY SURVEY DEPT.

FIRM OR AGENCY

1000 FLORIDA STREET

ADDRESS

PUNTA GORDA, FLORIDA 33950

CITY

STATE

546
 Ft.
 06 Dec



SEND TO:

Department of Environmental Protection
 Bureau of Survey and Mapping
 3900 Commonwealth Boulevard
 Mail Station 105
 Tallahassee, Florida 32399

Completeness checked by: *B. Lent*

Accepted and filed: *5-1-95*

Date

BLM. - ID. *02000001* DEP. USE ONLY

02000001