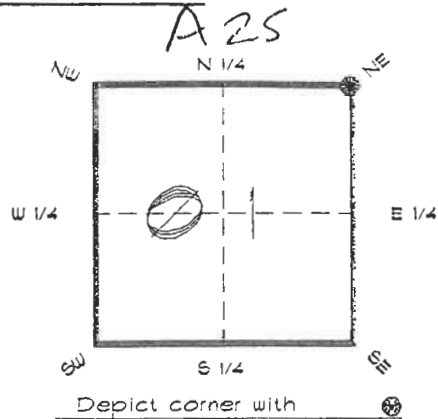


FLORIDA DEPARTMENT OF ENVIRONMENTAL PROTECTION  
CERTIFIED CORNER RECORD

CORNER DESCRIPTION:

N.E. corner of Section 1,  
Twp 40 S., Rge 24 E.  
Tallahassee Base Meridian,

CHARLOTTE County(s), Florida.  
DESOTO



MONUMENTATION DESCRIPTION:

Describe original monument and accessories, or subsequent restoration. Give sources of information. (If no attempt was made to search for the original monument and accessories, this information is not necessary.)

Description of corner evidence found:  
3"x3" CONCRETE MONUMENT

State method(s) to determine corner location (lost corners only):

HORIZONTAL POSITION INFORMATION ( if determined ):

Latitude 27°02'03.96568" N Longitude 81°51'30.91295" W  
Y(Northing) 299227.216 m X(Easting) 214030.844 m Zone FLW  
Convergence 0°03'51.394" Scale factor 0.99994361

Coordinate determination (circle one): Field traverse GPS

Horizontal datum (circle one): NAD27 NAD83(1986) NAD83(1990) other (explain)

Order of accuracy as defined in Standards and Specifications for Geodetic Control Networks published by the Federal Geodetic Control Committee (circle one):  
1st 2nd, 3rd, class \_\_\_\_\_

or Minimum Technical Standards (Chapter 61G17, F.A.C.) ratio of closure for field data (example 1:10,000), \_\_\_\_\_. This does not specify an order of accuracy.

Control point(s) used for survey: CHARLOTTE COUNTY HORIZONTAL CONTROL NETWORK INCLUDES HAYOLINE 2, PLACIDA 2, W260, PUNTPORT, & FLGPS 58-AS-B-ORDER STATIONS.

Comments:

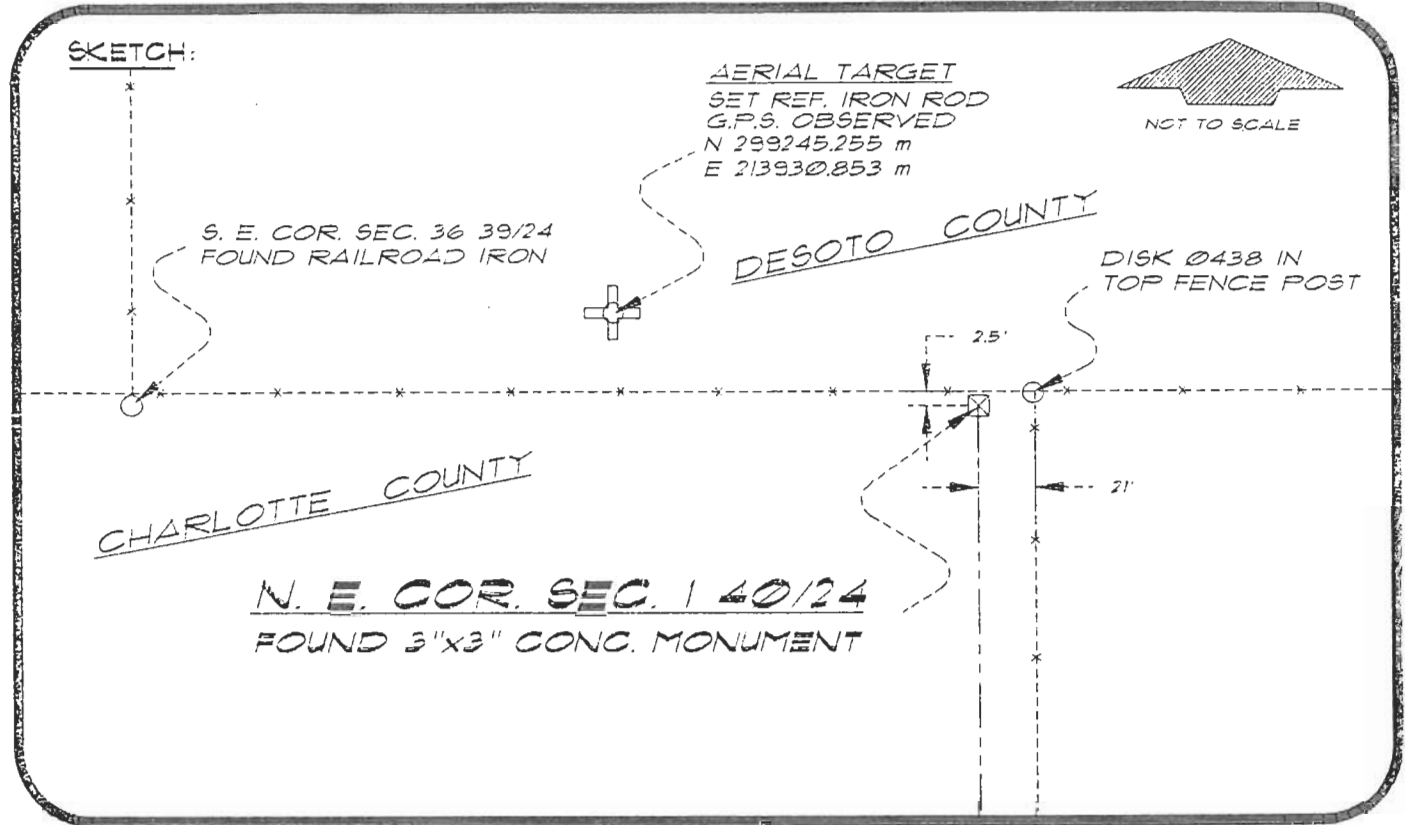
Stamp: SURVEYED BY [illegible] DATE [illegible]

4024A25

DOC. #

052034

SKETCH:



AERIAL TARGET  
 SET REF. IRON ROD  
 G.P.S. OBSERVED  
 N 299245.255 m  
 E 213930.853 m



BASIS OF BEARING SOLAR OBSERVATION

REFER: FB 304/65

SET SURVEY MARKER POST 3.0' N'LY

REFERENCE MEASUREMENTS

<u>Description</u>	<u>Bearing</u>	<u>Distance</u>
DISK 0438 IN TOP FENCE POST	N 86°09'06" E	21.01'
S. E. COR. SEC. 36 39/24	S 89°39'10" E W	760.05'
SET REF. IRON ROD	N 79°42'34" W	333.37'

SURVEYORS CERTIFICATE: I certify the monument and accessories indicated above were field located on MAY 13, 1994

*R. D. Ross*  
 SIGNATURE

PLS 4260

CORRECTION 6/3/95  
 ( TO S. P. COORD. )

6/5/95  
 DATE

CHARLOTTE COUNTY SURVEY DEPT.  
 FIRM OR AGENCY

1000 FLORIDA STREET  
 ADDRESS

PUNTA GORDA, FLORIDA 33950  
 CITY STATE

545  
 ARCADIA  
 SE



Completeness checked by: *B. Hunt*  
 Accepted and filed: 7-3-95 Date  
 BLM - ID: 01000006 DEP. USE ONLY

SEND TO:

Department of Environmental Protection  
 Bureau of Survey and Mapping  
 3900 Commonwealth Boulevard  
 Mall Station 105  
 Tallahassee, Florida 32399