

4024E03

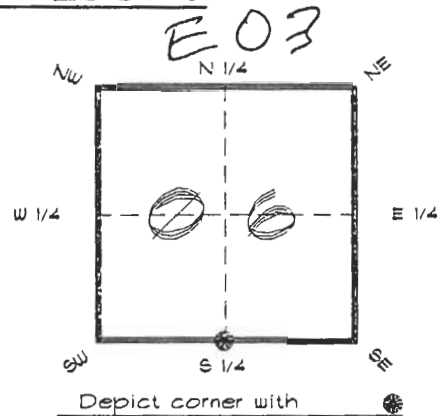
DOC. #

051057

**FLORIDA DEPARTMENT OF ENVIRONMENTAL PROTECTION**  
**CERTIFIED CORNER RECORD**

CORNER DESCRIPTION:

S. 1/4 corner of Section 6,  
Twp 40 S., Rge 24 E.,  
Tallahassee Base Meridian,  
CHARLOTTE County(s), Florida.



MONUMENTATION DESCRIPTION:

Describe original monument and accessories, or subsequent restoration. Give sources of information. (If no attempt was made to search for the original monument and accessories, this information is not necessary.)

Description of corner evidence found:

CONCRETE MONUMENT LB 1221

State method(s) to determine corner location (lost corners only):

HORIZONTAL POSITION INFORMATION ( if determined ):

Latitude 27°01'13.63341" N Longitude 81°56'54.05969" W  
Y(Northing) 297671.316 m X(Easting) 205125.295 m Zone FLW  
Convergence 0°01'24.474" Scale factor 0.99994150

Coordinate determination (circle one): Field traverse  GPS

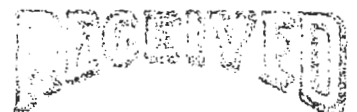
Horizontal datum (circle one): NAD27 NAD83(1986) NAD83(1990) other (explain)

Order of accuracy as defined in Standards and Specifications for Geodetic Control Networks published by the Federal Geodetic Control Committee (circle one):  
1st 2nd, 3rd, class \_\_\_\_\_

or Minimum Technical Standards (Chapter 6G17, F.A.C.) ratio of closure for field data (example 1:10,000), \_\_\_\_\_. This does not specify an order of accuracy.

Control point(s) used for survey: CHARLOTTE COUNTY HORIZONTAL CONTROL NETWORK INCLUDES HAYOLINE 2, FLACIDA 2, W260, PUNTPORT, & FLGPS 5B AS B ORDER STATIONS.

Comments:



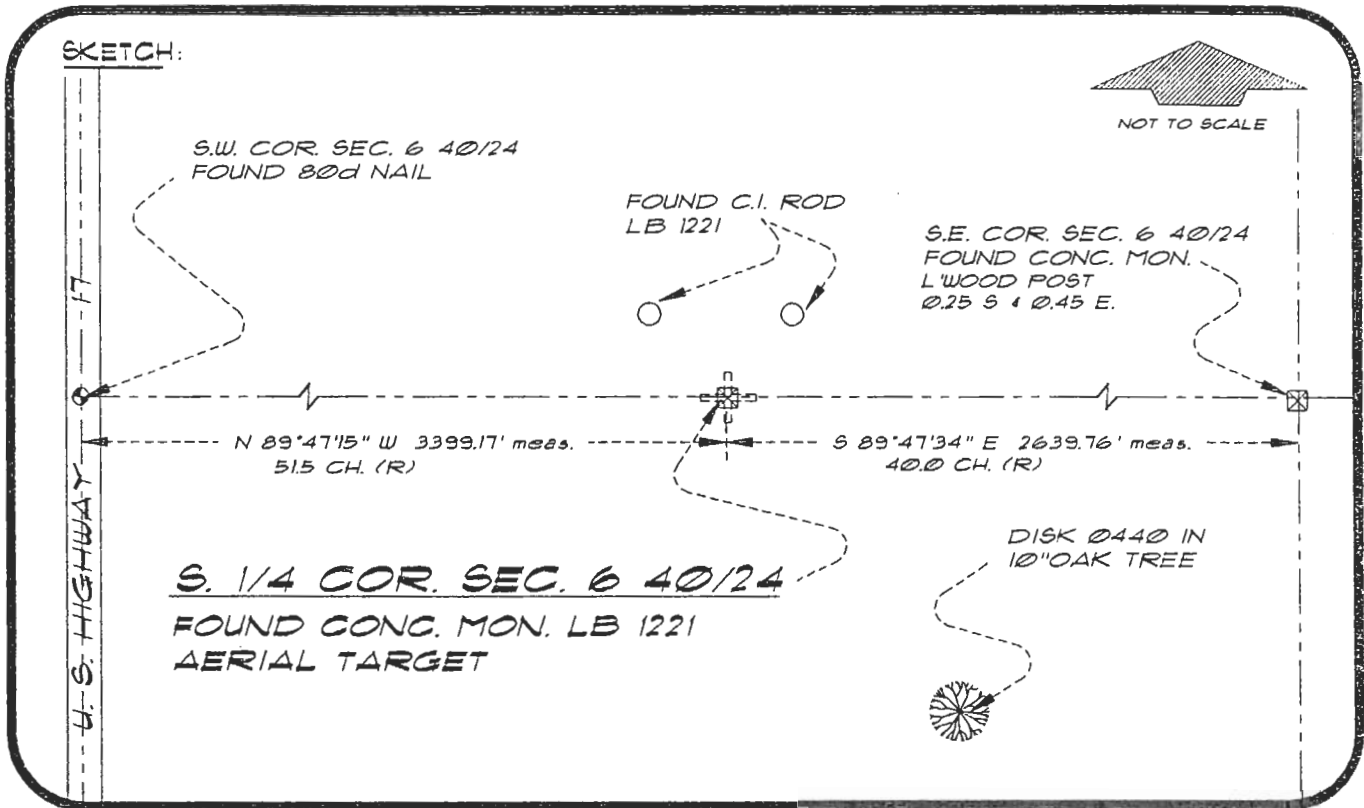
FEB 20 1995

SURVEY & MAPPING

4024E03

DOC. #

051057



BASIS OF BEARING GPS OBSERVATION REFER: FB 304/68  
 SET SURVEY MARKER POST 3.0' S'LY  
REFERENCE MEASUREMENTS

Description	Bearing	Distance
DISK 0440 IN 10" OAK	S 32°03'55" E	281.06'
C.I. ROD LB 1221	N 38°30'43" E	35.45'
C.I. ROD LB 1221	N 36°25'37" W	35.15'

SURVEYORS CERTIFICATE: I certify the monument and accessories indicated above were field located on JUNE 7, 1994

R. P. Rose PLS 4260  
 SIGNATURE  
 2-15-95  
 DATE

UPDATED 2/2/95

CHARLOTTE COUNTY SURVEY DEPT.  
 FIRM OR AGENCY  
7000 FLORIDA STREET  
 ADDRESS  
PUNTA GORDA, FLORIDA 33950  
 CITY STATE

546



Completeness checked by: [Signature]  
 Accepted and filed: 3-1-95 Date  
 B.L.M. - ID. 07CLO006 D.E.P. USE ONLY

SEND TO:  
 Department of Environmental Protection  
 Bureau of Survey and Mapping  
 3900 Commonwealth Boulevard  
 Mail Station 105  
 Tallahassee, Florida 32395