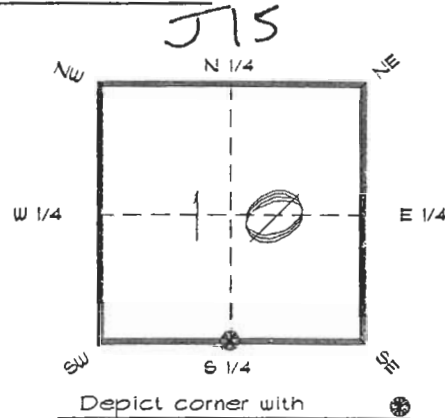


FLORIDA DEPARTMENT OF ENVIRONMENTAL PROTECTION
CERTIFIED CORNER RECORD

CORNER DESCRIPTION:

S. 1/4 corner of Section 10 ,
Twp 40 S. , Rge 24 E. ,
Tallahassee Base Meridian,
CHARLOTTE County(s), Florida.



MONUMENTATION DESCRIPTION:

Describe original monument and accessories, or subsequent restoration. Give sources of information. (If no attempt was made to search for the original monument and accessories, this information is not necessary.)

Description of corner evidence found:

CONCRETE MONUMENT WITH CAPPED IRON ROD No. 2905
0.5' E'LY

State method(s) to determine corner location (lost corners only):

HORIZONTAL POSITION INFORMATION (if determined):

Latitude 27°00'16.71295" Longitude 81°53'58.68587"
Y(Northing) 295922.387 m X(Easting) 209960.729 m Zone FLW
Convergence 0°02'44.059" Scale factor 0.99994240

Coordinate determination (circle one): Field traverse (GPS)

Horizontal datum (circle one): NAD27 NAD83(1986) (NAD83(1990)) other (explain)

Order of accuracy as defined in Standards and Specifications for Geodetic Control Networks published by the Federal Geodetic Control Committee (circle one):
1st, (2nd), 3rd, class 1

or Minimum Technical Standards (Chapter 6IG17, F.A.C.) ratio of closure for field data (example 1:10,000), _____ . This does not specify an order of accuracy.

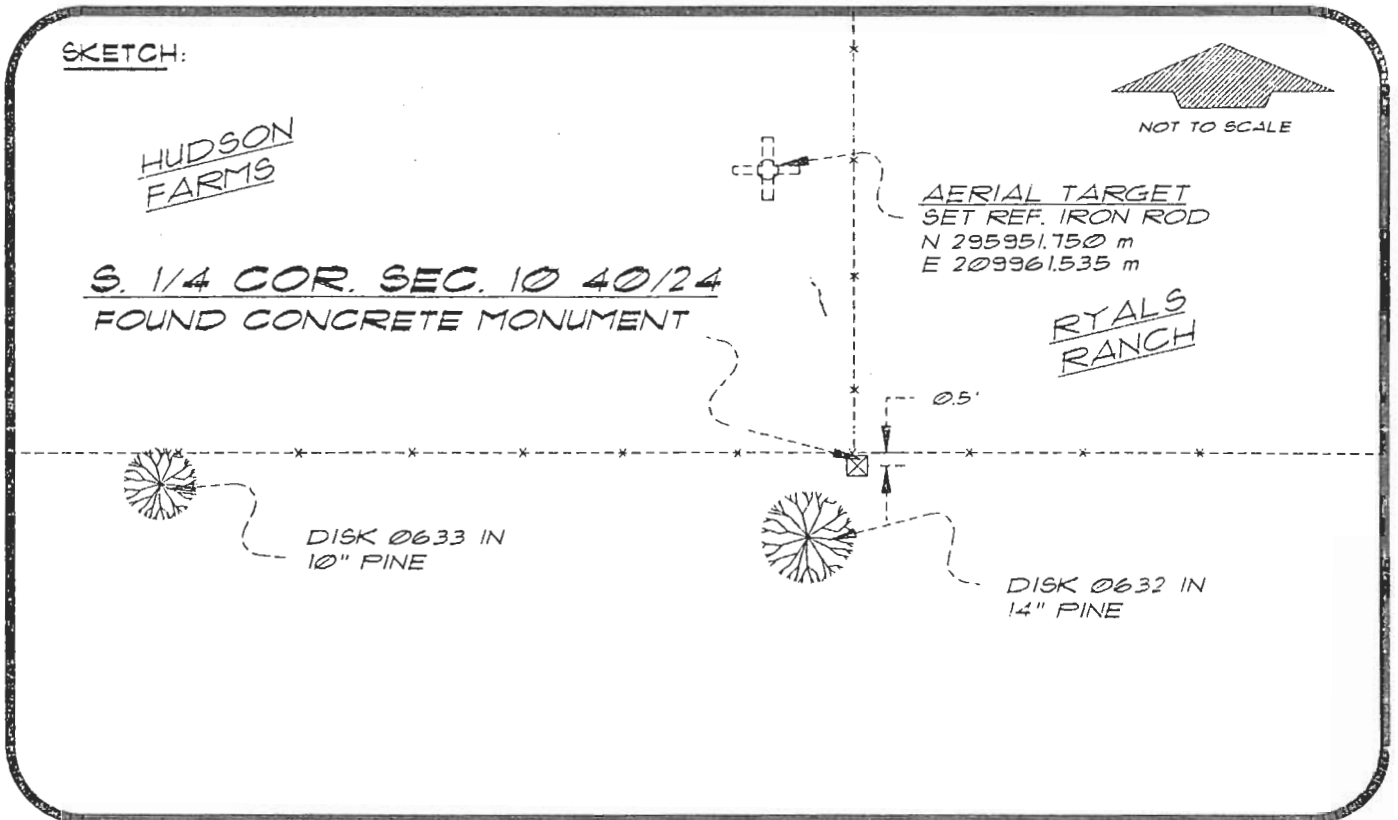
Control point(s) used for survey: CHARLOTTE COUNTY HORIZONTAL CONTROL NETWORK
INCLUDES HAVOLINE 2, PLACIDA 2, W260, FUNTPORT, & FLGPS 58 AS B ORDER STATIONS.

Comments: REPLACES DOC.# 0049493 CORRECTION TO
STATE PLANE COORDINATES

MAY 3 1995

SURVEY & MAPPING

SKETCH:



BASIS OF BEARING SOLAR OBSERVATION
SET SURVEY MARKER POST 3.0' E'LY

REFER: FB 301/64

REFERENCE MEASUREMENTS

Description	Bearing	Distance
SET REF. IRON ROD	N 08°48'59" W	100.18'
DISK 0632 IN 14" PINE	S 19°46'26" W	14.35'
DISK 0633 IN 10" PINE	S 89°28'51" W	205.41'

SURVEYORS CERTIFICATE: I certify the monument and accessories indicated above were field located on JULY 14, 1994

R. P. Rose
SIGNATURE

PLS 4260

UPDATED 2/9/95
UPDATED 4/20/95
COORDS. CORRECTED

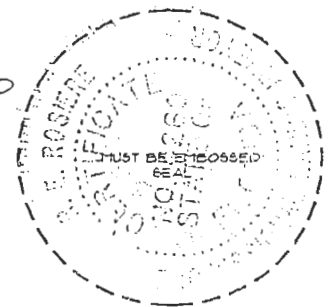
May 1, 1995
DATE

CHARLOTTE COUNTY SURVEY DEPT.
FIRM OR AGENCY

1000 FLORIDA STREET
ADDRESS

PUNTA GORDA, FLORIDA 33950
CITY STATE

546
FT. OGDEN



Completeness checked by: B. Hunt
Accepted and filed: 6-1-95
Date
BLM. - ID. 15CLO010 DE.P. USE ONLY

SEND TO:

Department of Environmental Protection
Bureau of Survey and Mapping
3900 Commonwealth Boulevard
Mail Station 105
Tallahassee, Florida 32399