

4024J25

DOC. #

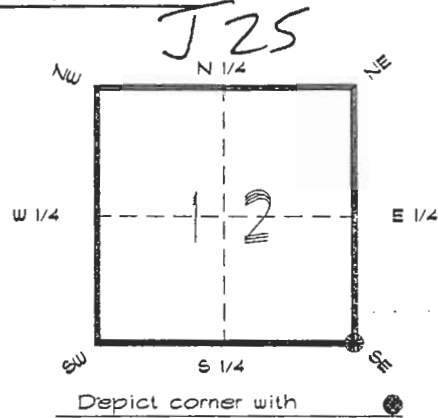
051552

**FLORIDA DEPARTMENT OF ENVIRONMENTAL PROTECTION
CERTIFIED CORNER RECORD**

CORNER DESCRIPTION:

S. E. corner of Section 12,
Twp 40 S., Rge 24 E.,
Tallahassee Base Meridian,

CHARLOTTE County(s), Florida.



MONUMENTATION DESCRIPTION:

Describe original monument and accessories, or subsequent restoration. Give sources of information. (If no attempt was made to search for the original monument and accessories, this information is not necessary.)

Description of corner evidence found:

3"x3" CONCRETE MONUMENT UNDER CORNER POST

State method(s) to determine corner location (lost corners only):

HORIZONTAL POSITION INFORMATION (if determined):

Latitude 27°00'18.46345" N Longitude 81°51'31.32055" W

Y(Northing) 295980.152 m X(Easting) 214023.248 m Zone FLW

Convergence 0°03'50.977" Scale factor 0.99994360

Coordinate determination (circle one): Field traverse GPS

Horizontal datum (circle one): NAD27 NAD83(1986) NAD83(1990) other (explain)

Order of accuracy as defined in Standards and Specifications for Geodetic Control Networks published by the Federal Geodetic Control Committee (circle one):
1st, 2nd, 3rd, class _____

or Minimum Technical Standards (Chapter 6IG17, F.A.C.) ratio of closure for field data (example 1:10,000), _____ . This does not specify an order of accuracy.

Control point(s) used for survey: CHARLOTTE COUNTY HORIZONTAL CONTROL NETWORK INCLUDES HAYOLINE 2, FLACIDA 2, W260, PUNTPORT, & FLGPS 58 AS B ORDER STATIONS.

Comments:

RECEIVED

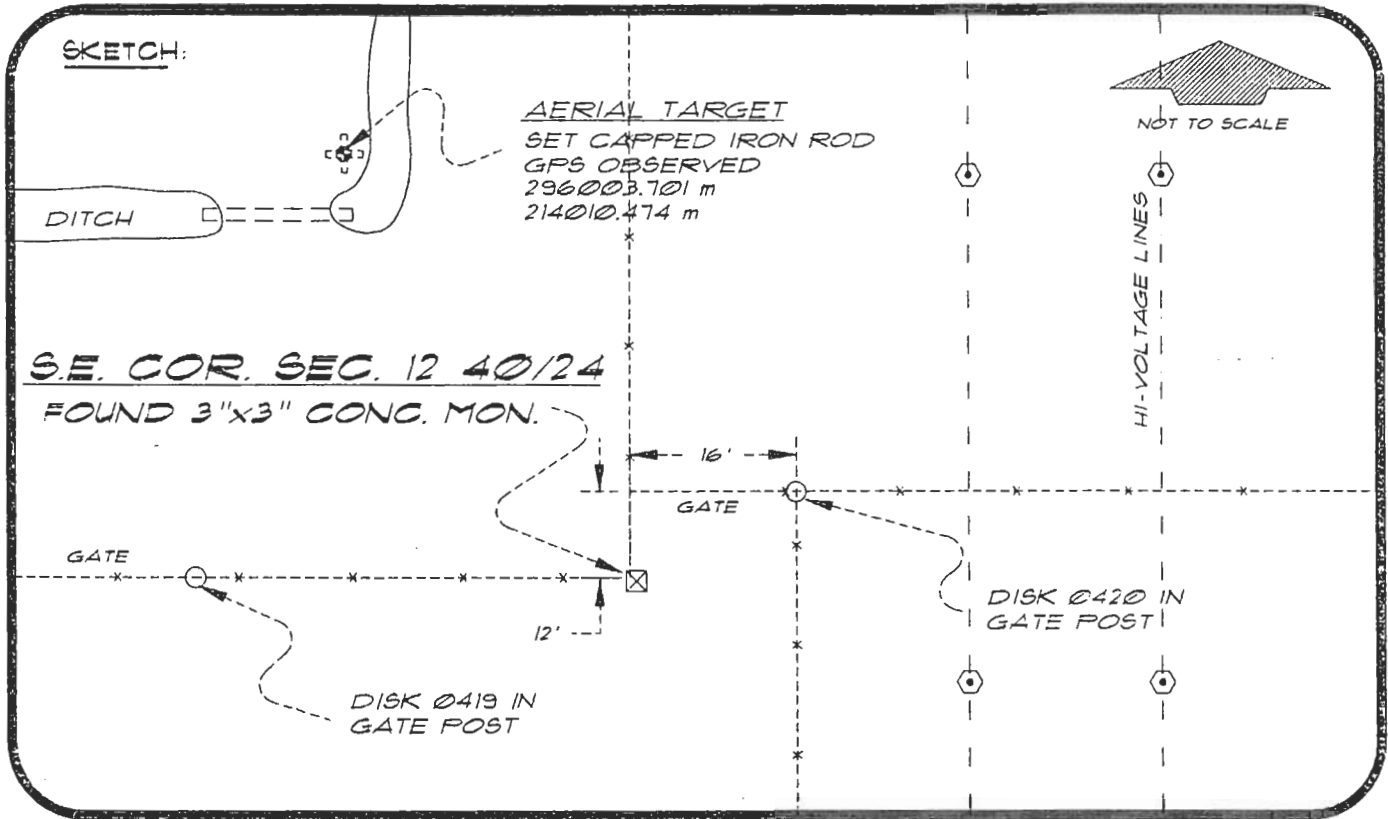
APR 14 1995

SURVEY & MAPPING

4024J25

DOC. #

051552



BASIS OF BEARING SOLAR OBSERVATION
 SET SURVEY MARKER POST 0.4' S'LY

REFER FB: 304/54

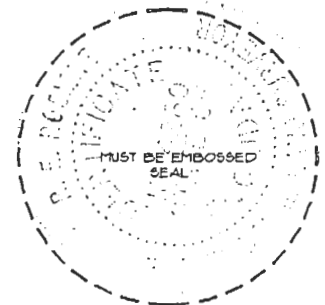
REFERENCE MEASUREMENTS

Description	Bearing	Distance
DISK 0420 IN GATE POST	N 56°57'33" E	19.68'
DISK 0419 IN GATE POST	S 88°05'47" W	65.87'
SET REF. IRON ROD (GPS OBSERVED)	N 25°24'51" W	87.90'

SURVEYORS CERTIFICATE: I certify the monument and accessories indicated above
 were field located on MARCH 23, 1994

R. R. Ros PLS 4260
SIGNATURE
April 11, 1995
DATE
CHARLOTTE COUNTY SURVEY DEPT.
FIRM OR AGENCY
1000 FLORIDA STREET
ADDRESS
PUNTA GORDA, FLORIDA 33950
CITY STATE

545
 ARCADIA
 SE



Completeness checked by: B. Smith
 Accepted and filed: 5-1-95 Date
 BLM. - ID. 13120718 DEP. USE ONLY

SEND TO:

Department of Environmental Protection
 Bureau of Survey and Mapping
 3900 Commonwealth Boulevard
 Mail Station 105
 Tallahassee, Florida 32399