

4024N05

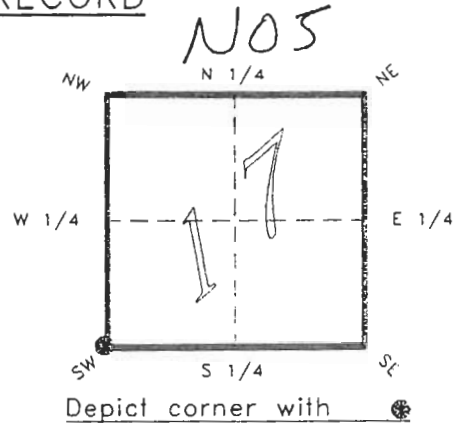
DOC. #

051068

FLORIDA DEPARTMENT OF ENVIRONMENTAL PROTECTION
CERTIFIED CORNER RECORD

CORNER DESCRIPTION:

S.W. corner of Section 17 ,
Twp 40 S. , Rge 24 E. ,
Tallahassee Base Meridian,
CHARLOTTE County(s), Florida.



MONUMENTATION DESCRIPTION:

Describe original monument and accessories, or subsequent restoration. Give sources of information. (If no attempt was made to search for the original monument and accessories, this information is not necessary.)

Description of corner evidence found:

4"x4" CONCRETE MONUMENT (BROKEN) REPLACED WITH CONCRETE MONUMENT

State method(s) to determine corner location (lost corners only):

HORIZONTAL POSITION INFORMATION (if determined):

Latitude 26°59'27.65545" N Longitude 81°56'26.01011" W

Y(Northing) 294409.975 m X(Easting) 205899.995 m Zone FLW

Convergence 0°01'37.120" Scale factor 0.99994161

Coordinate determination (circle one): Field traverse GPS

Horizontal datum (circle one): NAD27 NAD83(1986) NAD83(1990) other (explain)

Order of accuracy as defined in "Standards and Specifications for Geodetic Control Networks" published by the Federal Geodetic Control Committee (circle one):

1st, 2nd, 3rd, class 1 ,

or Minimum Technical Standards (Chapter 21HH-6, F.A.C.) ratio of closure for field data (example 1:10,000), _____ . This does not specify an order of accuracy.

Control point(s) used for survey: *CHARLOTTE COUNTY HORIZONTAL CONTROL NETWORK INCLUDES HAVOLINE 2, PLACIDA 2, W260, PUNTPORT, & FLGPS 58-AS, B ORDER STATIONS.*

Comments:

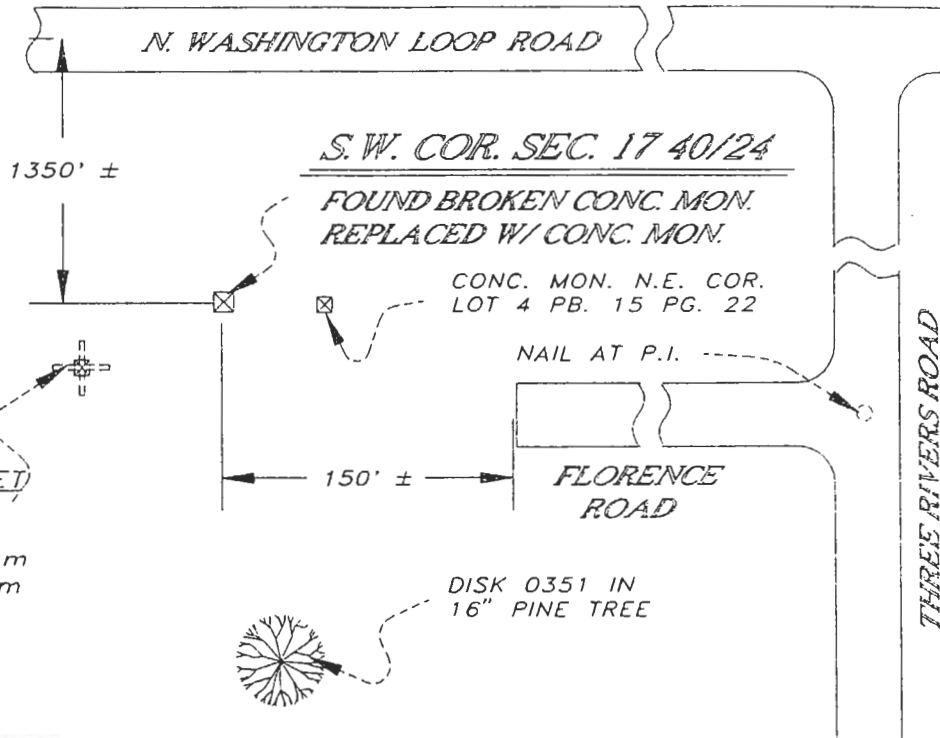
[Handwritten signature]
JAN 31 1995
SURVEY & MAPPING

4024N05

DOC. #

051068

SKETCH:



AERIAL TARGET
 SET REF. MON.
 GPS OBSERVED
 N 294400.448 m
 E 205878.628 m

BASIS OF BEARING SOLAR OBSERVATION REFER: FB 304/16
 SET SURVEY MARKER POST 3' N'LY

REFERENCE MEASUREMENTS

Description	Bearing	Distance
DISK 0351 IN 16" PINE	S 37°39'32" E	240.77'
N.W. COR. LOT 4	S 88°23'22" E	28.59' (27.93'P)
NAIL @ PI FLORENCE RD.	S 87°10'12" E	1476.03'
SET REF. CONC. MON.	S 65°59'50" W	76.76'
	(S 65°58'13" W GRID)	

SURVEYORS CERTIFICATE: I certify the monument and accessories indicated above were field located on JANUARY 14, 1994.

R. P. Rose
 SIGNATURE

PLS 4260

UPDATED JAN. 10, 1995

1/30/95
 DATE

CHARLOTTE COUNTY SURVEY DEPT.

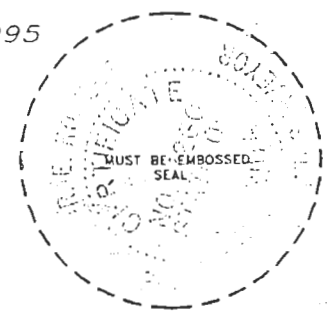
FIRM OR AGENCY

7000 FLORIDA STREET

ADDRESS

PUNTA GORDA, FLA. 33950
 CITY STATE

508



SEND TO:
 Department of Environmental Protection
 Bureau of Survey and Mapping
 3900 Commonwealth Boulevard
 Mail Station 105
 Tallahassee, Florida 32399

Completeness checked by: *B. Linton*
 Accepted and filed: 3-1-95 Date
 B.L.M. - I.D. 19181720 D.N.R. USE ONLY