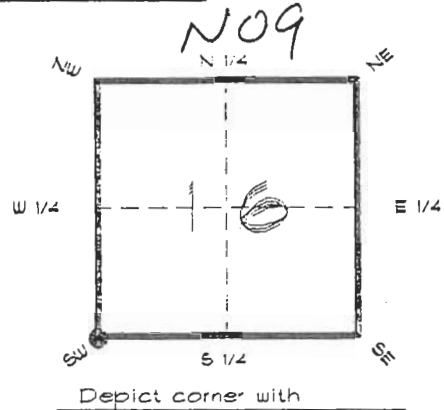


4024N09

FLORIDA DEPARTMENT OF ENVIRONMENTAL PROTECTION
CERTIFIED CORNER RECORD

CORNER DESCRIPTION:

S. W. corner of Section 16,
Twp 40 S., Rge 24 E.,
Tallahassee Base Meridian,
CHARLOTTE County(s), Florida.



MONUMENTATION DESCRIPTION:

Describe original monument and accessories, or subsequent restoration. Give sources of information. (If no attempt was made to search for the original monument and accessories, this information is not necessary.)

Description of corner evidence found:

6"x6" CONCRETE MONUMENT (BROKEN) OF TYPE SET
BY A. DUFFIE 1926 +/-

State method(s) to determine corner location (lost corners only):

RECORDED
JAN 31 1995
SURVEY & MAPPING

HORIZONTAL POSITION INFORMATION (if determined):

Latitude 26°59'26.34302" N Longitude 81°55'29.49475" W
Y(Northing) 294370.413 m X(Easting) 207458.226 m Zone FLW
Convergence 0°02'02.768" Scale factor 0.99994186

Coordinate determination (circle one):

Field traverse

GPS

Horizontal datum (circle one): NAD27 NAD83(1986) NAD83(1990) other (explain)

Order of accuracy as defined in Standards and Specifications for Geodetic Control Networks published by the Federal Geodetic Control Committee (circle one):

1st, 2nd, 3rd, class 1

or Minimum Technical Standards (Chapter 6IGIT, F.A.C.) ratio of closure for field data (example 1:10,000), This does not specify an order of accuracy.

Control point(s) used for survey: CHARLOTTE COUNTY HORIZONTAL CONTROL NETWORK INCLUDES HAYOLINE 2, PLACIDA 2, W260, PUNTPORT, & FLGPS 58 AS B ORDER STATIONS.

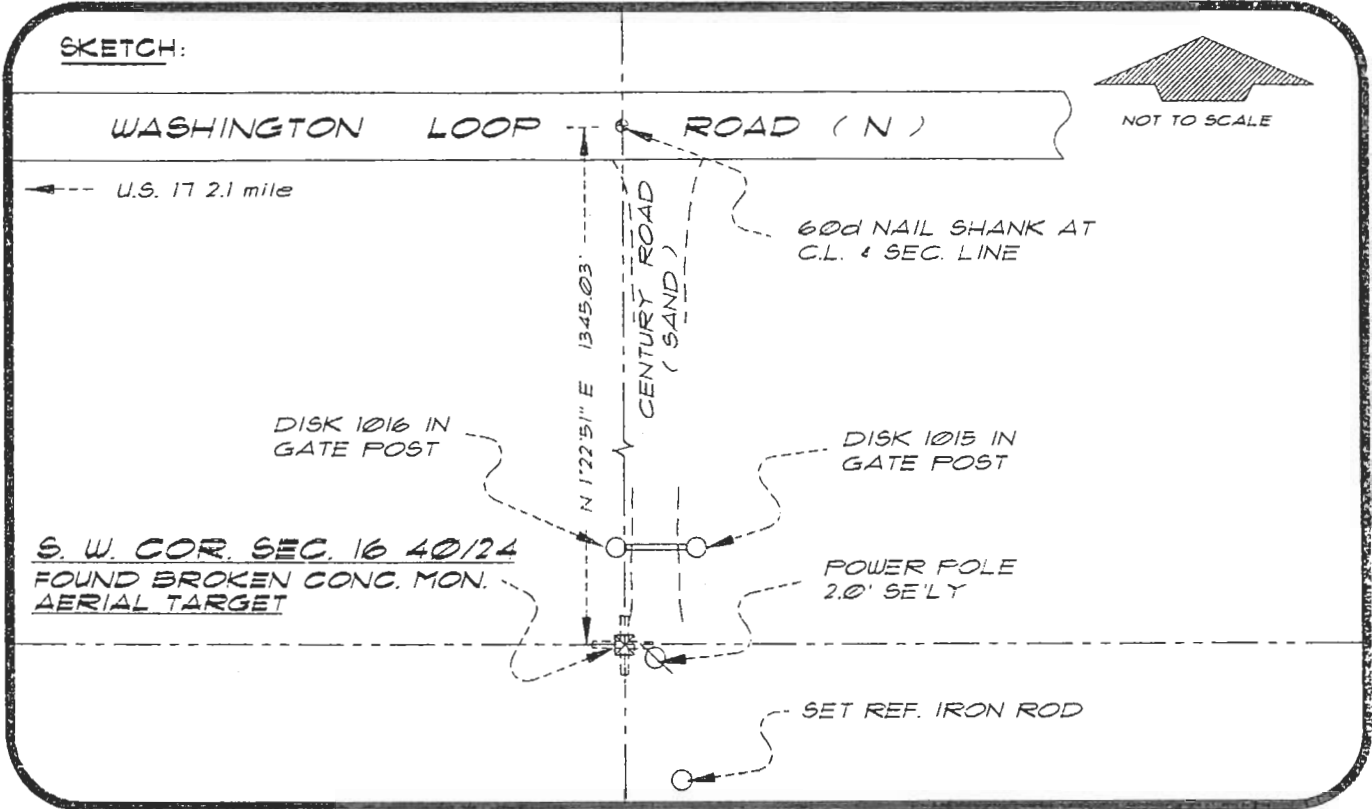
Comments:

4024N09

DOC. #

051067

SKETCH:



BASIS OF BEARING SOLAR OBSERVATION
SET SURVEY MARKER POST 3.0' S'LY

REFER: FB 30/1/65

REFERENCE MEASUREMENTS

Description	Bearing	Distance
SET REF. IRON ROD	S 12°34'53" E	44.03'
DISK 1016 IN GATE POST	N 00°50'47" E	30.06'
DISK 1015 IN GATE POST	N 31°00'27" E	33.77'

SURVEYORS CERTIFICATE: I certify the monument and accessories indicated above were field located on AUGUST 23, 1994.

R. P. Rose
SIGNATURE

PLS 4260

UPDATED JAN. 9, 1995

1/30/95
DATE

CHARLOTTE COUNTY SURVEY DEPT.
FIRM OR AGENCY

7000 FLORIDA STREET
ADDRESS

PUNTA GORDA, FLORIDA 33950
CITY STATE



508

Completeness checked by: *B. Hunter*
 Accepted and filed: 3-1-95 Date
 BLM. - I.D. 20171621 DEF. USE ONLY

SEND TO:

Department of Environmental Protection
Bureau of Survey and Mapping
3900 Commonwealth Boulevard
Mail Station 105
Tallahassee, Florida 32399