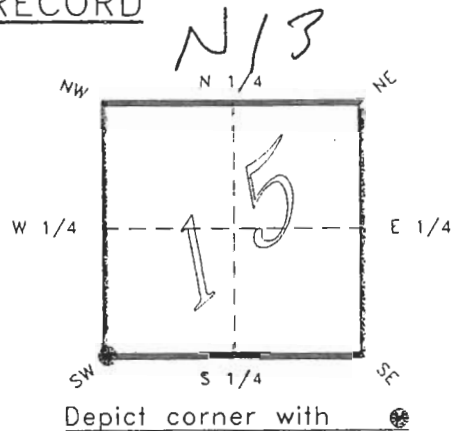


4024N13

FLORIDA DEPARTMENT OF ENVIRONMENTAL PROTECTION
CERTIFIED CORNER RECORD

CORNER DESCRIPTION:

S.W. corner of Section 15 ,
Twp 40 S. , Rge 24 E. ,
Tallahassee Base Meridian,
CHARLOTTE County(s), Florida.



MONUMENTATION DESCRIPTION:

Describe original monument and accessories, or subsequent restoration. Give sources of information. (If no attempt was made to search for the original monument and accessories, this information is not necessary.)

Description of corner evidence found:

6"x6" TAPPED CONCRETE MONUMENT OF TYPE SET BY A. DUFFIE WITH TOP BROKEN. (IN LOW WET AREA)

State method(s) to determine corner location (lost corners only):

HORIZONTAL POSITION INFORMATION (if determined):

Latitude 26°59'25.02096" N Longitude 81°54'29.65225" W
Y(Northing) 294330.814 m X(Easting) 209108.202 m Zone FLW
Convergence 0°02'29.925" Scale factor 0.99994220

Coordinate determination (circle one): Field traverse GPS
Horizontal datum (circle one): NAD27 NAD83(1986) NAD83(1990) other (explain)

Order of accuracy as defined in "Standards and Specifications for Geodetic Control Networks" published by the Federal Geodetic Control Committee (circle one):
1st, 2nd, 3rd, class 1 ,

or Minimum Technical Standards (Chapter 21HH-6, F.A.C.) ratio of closure for field data (example 1:10,000), _____ . This does not specify an order of accuracy.

Control point(s) used for survey: CHARLOTTE COUNTY HORIZONTAL CONTROL NETWORK INCLUDES HAVOLINE 2, PLACIDA 2, W260, PUNTPORT, & FLGPS 58 AS B ORDER STATIONS.

Comments:

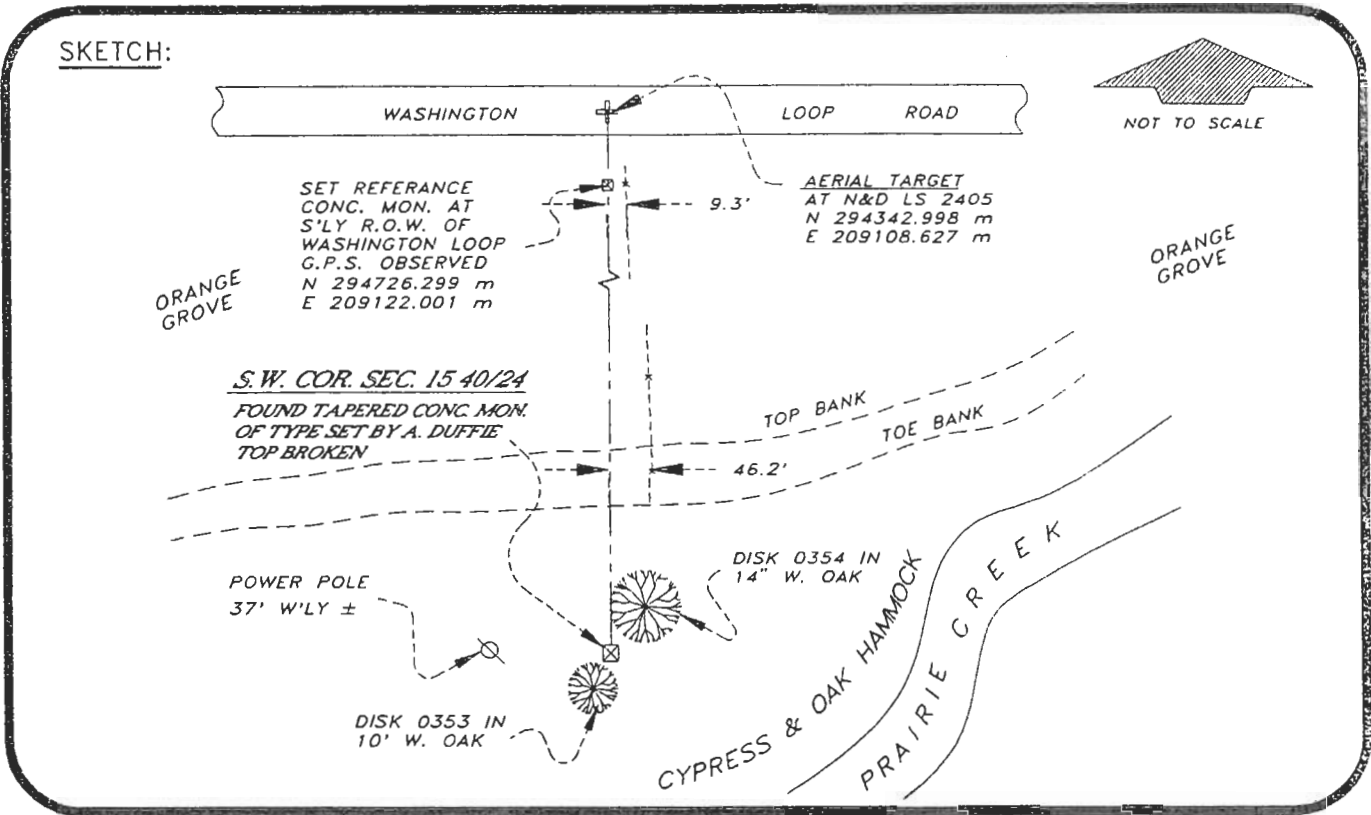
JAN 31 1995

4024N13

DOC. #

051066

SKETCH:



BASIS OF BEARING SOLAR OBSERVATION
SET SURVEY MARKER POST 3.5' S'LY

REFER: FB 304/14

REFERENCE MEASUREMENTS

Description	Bearing	Distance
DISK 0354 IN 14" W. OAK	N 28°27'14" E	10.28'
DISK 0353 IN 10" W. OAK	S 10°19'26" W	5.80'
SET REF. CONC. MON.	N 02°02'24" E	1298.38'
AERIAL TARGET	N 02°02'24" E	1338.38'

SURVEYORS CERTIFICATE: I certify the monument and accessories indicated above were field located on JANUARY 13, 1994.

R. P. Rose
SIGNATURE

PLS 4260

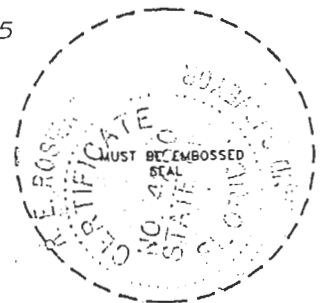
UPDATED JAN. 10, 1995

1/30/95
DATE

CHARLOTTE COUNTY SURVEY DEPT.
FIRM OR AGENCY

7000 FLORIDA STREET
ADDRESS

PUNTA GORDA, FLA. 33950
CITY STATE



508

Completeness checked by: B. Denton
 Accepted and filed: 3-1-95 Date
 B.L.M. - I.D. 21161522 D.N.R. USE ONLY

SEND TO:

Department of Environmental Protection
 Bureau of Survey and Mapping
 3900 Commonwealth Boulevard
 Mail Station 105
 Tallahassee, Florida 32399