

4024N21

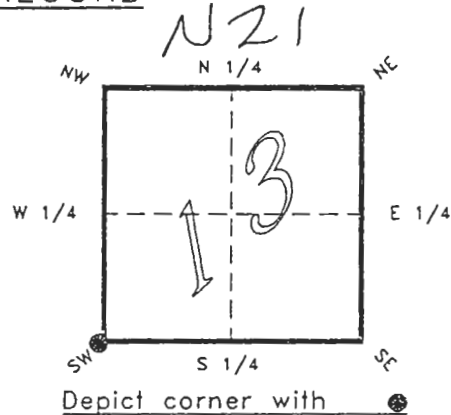
DOC. #

051063

FLORIDA DEPARTMENT OF ENVIRONMENTAL PROTECTION  
CERTIFIED CORNER RECORD

CORNER DESCRIPTION:

S.W. corner of Section 13,  
Twp 40 S., Rge 24 E.,  
Tallahassee Base Meridian,  
CHARLOTTE County(s), Florida.



MONUMENTATION DESCRIPTION:

Describe original monument and accessories, or subsequent restoration. Give sources of information. (If no attempt was made to search for the original monument and accessories, this information is not necessary.)

Description of corner evidence found:

6"x6" TAPERED CONCRETE MONUMENT WITH TOP BROKEN

State method(s) to determine corner location (lost corners only):

HORIZONTAL POSITION INFORMATION ( if determined ):

Latitude 26°59'25.03758" N Longitude 81°52'30.55498" W  
Y(Northing) 294334.143 m X(Easting) 212391.901 m Zone FLW  
Convergence 0°03'23.976" Scale factor 0.99994307

Coordinate determination (circle one):

Field traverse

GPS

Horizontal datum (circle one): NAD27 NAD83(1986) NAD83(1990) other (explain)

Order of accuracy as defined in "Standards and Specifications for Geodetic Control Networks" published by the Federal Geodetic Control Committee (circle one):

1st, 2nd, 3rd, class 1

or Minimum Technical Standards (Chapter 21HH-6, F.A.C.) ratio of closure for field data (example 1:10,000), \_\_\_\_\_ . This does not specify an order of accuracy.

Control point(s) used for survey: CHARLOTTE COUNTY HORIZONTAL CONTROL NETWORK INCLUDES HAYOLINE 2, PLACIDA 2, W260, PUNTPORT, & FLGPS 58 AS B' ORDER STATIONS.

Comments:

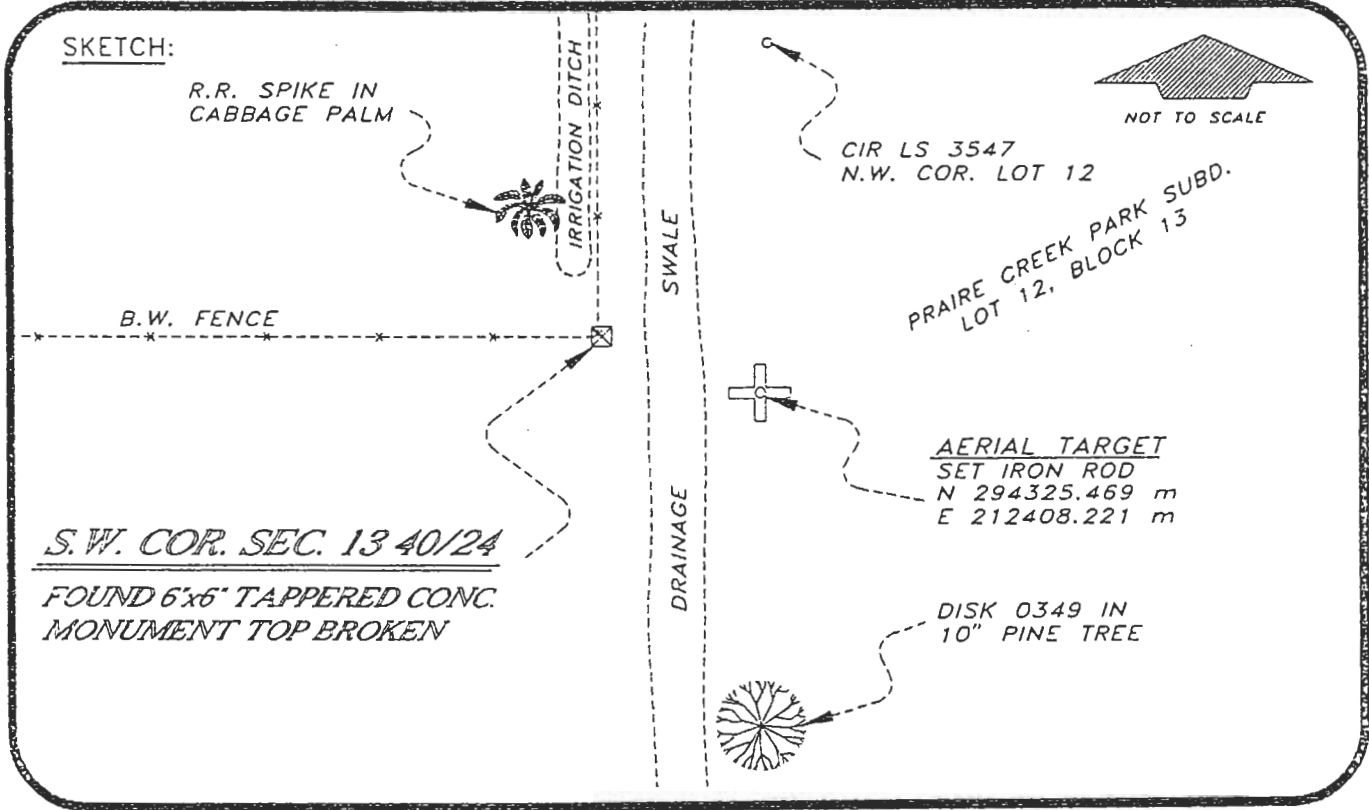
JAN 31 1995

SURVEY & MAPPING

051063

4024N21

DOC. #



BASIS OF BEARING SOLAR OBSERVATION  
SET SURVEY MARKER POST 3' N'LY

REFER: FB 304/11

REFERENCE MEASUREMENTS

Description	Bearing	Distance
DISK 0349 IN 10" PINE	S 13°28'31" E	381.79'
R.R. SPIKE IN C. PALM	N 14°57'21" W	56.92'
N.W. COR. LOT 12	N 23°45'41" E	151.09'
AERIAL TARGET	S 61°57'08" E	60.64'

SURVEYORS CERTIFICATE: I certify the monument and accessories indicated above were field located on JANUARY 7, 19 93.

*R. Rose*  
SIGNATURE

PLS 4260

UPDATED JAN. 9, 1995

1/30/95  
DATE

CHARLOTTE COUNTY SURVEY DEPT.  
FIRM OR AGENCY

7000 FLORIDA STREET  
ADDRESS

PUNTA GORDA, FLA. 33950  
CITY STATE

508



Completeness checked by: *B. Brando*

Accepted and filed: 3-1-95 Date

B.L.M. - I.D. 23141324 D.N.R. USE ONLY

SEND TO:

Department of Environmental Protection  
Bureau of Survey and Mapping  
3900 Commonwealth Boulevard  
Mail Station 105  
Tallahassee, Florida 32399