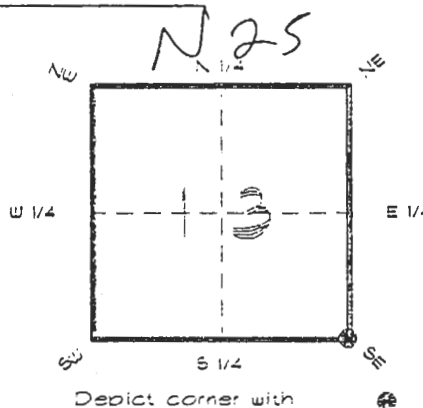


4024N25

FLORIDA DEPARTMENT OF ENVIRONMENTAL PROTECTION  
CERTIFIED CORNER RECORD

CORNER DESCRIPTION:

S. E. corner of Section 13  
Twp 40 S., Rge 24 E.  
Tallahassee Base Meridian,  
CHARLOTTE County(s), Florida.



MONUMENTATION DESCRIPTION:

Describe original monument and accessories, or subsequent restoration. Give sources of information. (If no attempt was made to search for the original monument and accessories, this information is not necessary.)

Description of corner evidence found:

CONCRETE MONUMENT 2' BELOW SURFACE OF MUD,  
SET CONCRETE MONUMENT ON TOP.

State method(s) to determine corner location (lost corners only):

HORIZONTAL POSITION INFORMATION ( if determined ):

Latitude 26°59'25.46655" N Longitude 81°51'31.74345" W

Y(Northing) 294349.054 m X(Easting) 214013.414 m Zone FLW

Convergence 0°03'50.668" Scale factor 0.99994360

Coordinate determination (circle one): (Field traverse) (GPS)

Horizontal datum (circle one): NAD27 NAD83(1986) (NAD83(1990)) other (explain)

Order of accuracy as defined in Standards and Specifications for Geodetic Control Networks published by the Federal Geodetic Control Committee (circle one):

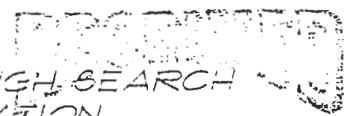
1st, 2nd, 3rd, class 1

or Minimum Technical Standards (Chapter 6IG17, F.A.C.) ratio of closure for field data (example 1:10,000), This does not specify an order of accuracy.

Control point(s) used for survey: CHARLOTTE COUNTY HORIZONTAL CONTROL NETWORK INCLUDES HAYOLINE 2, PLACIDA 2, W260, PUNTPORT, & FLGPS 38 49 3 ORDER STATIONS.

Comments:

PLATTED POSITION IS 1.0' W & 0.45' N, THOROUGH SEARCH REVELED NO OTHER EVIDENCE OF MONUMENTATION.

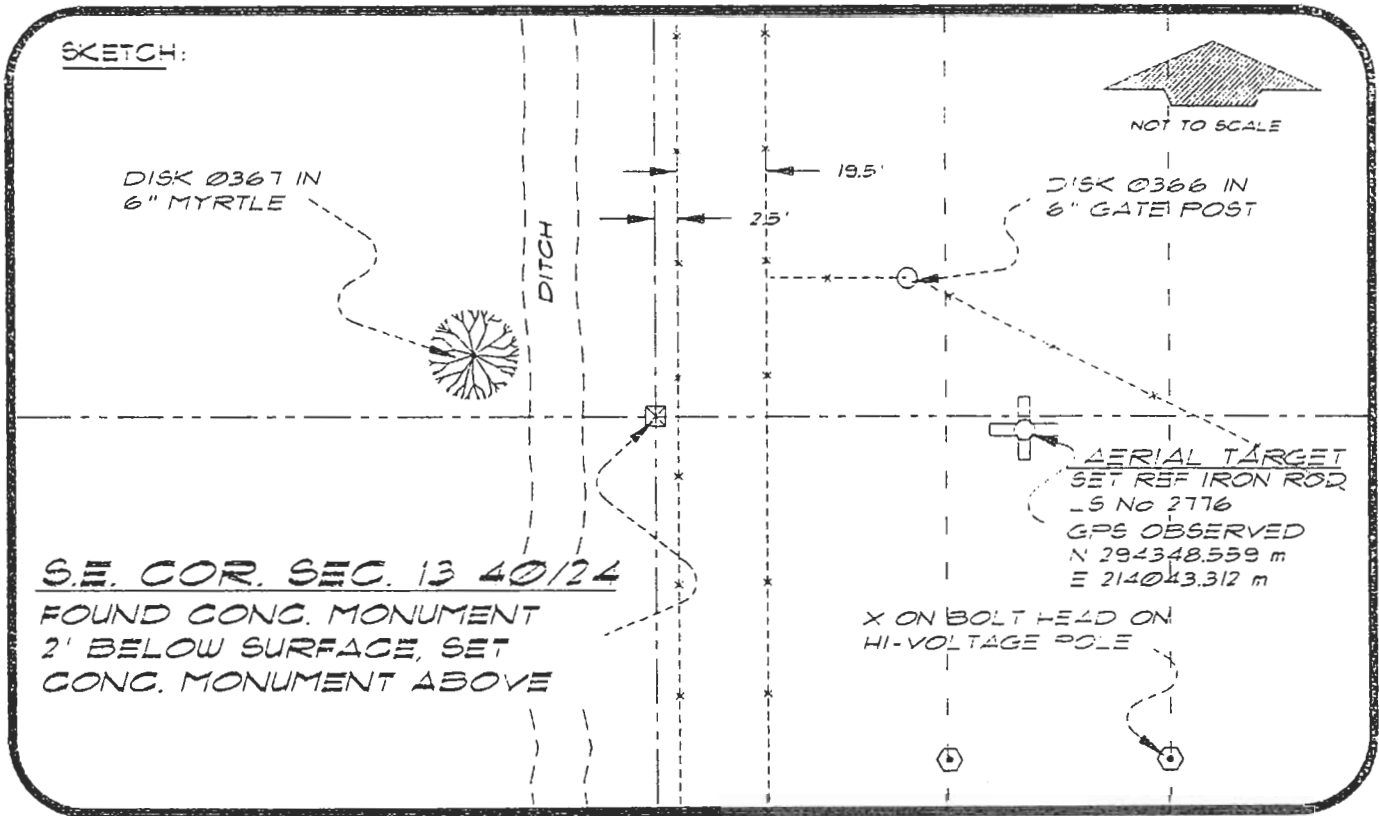


FEB 20 1995

051064

4024N25

DOC. #



BASIS OF BEARING SOLAR OBSERVATION  
SET SURVEY MARKER POST 3.0' W'LY

REFER: FB 304/28

REFERENCE MEASUREMENTS

Description	Bearing	Distance
X ON BOLT HEAD	S 47°09'28" E	108.75'
DISK Ø367 IN 6" MYRTLE	N 72°19'33" W	30.81'
DISK Ø366 IN GATE POST	N 58°38'42" E	79.72'
SET REF. IRON ROD	S 88°59'13" E	98.11'
	( S 89°03'04" E	GRID )

SURVEYORS CERTIFICATE: I certify the monument and accessories indicated above were field located on JANUARY 27, 1994

*R. P. Rose*  
SIGNATURE

PLS 4260

UPDATED 2/8/95

2-15-95  
DATE

CHARLOTTE COUNTY SURVEY DEPT.  
FIRM OR AGENCY

1000 FLORIDA STREET  
ADDRESS

PUNTA GORDA, FLORIDA 33950  
CITY STATE

507  
BERMONT



Completeness checked by: *[Signature]*

Accepted and filed: 3-12-95 Date

BLM. - ID. 24131019 DEP. USE ONLY

SEND TO:

Department of Environmental Protection  
Bureau of Survey and Mapping  
3900 Commonwealth Boulevard  
Mail Station 105  
Tallahassee, Florida 32399

2000  
1869