

4024R03

DOC. #

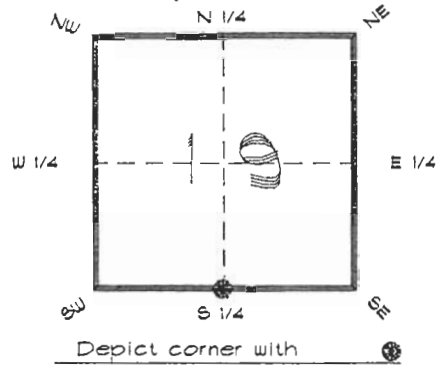
051070

**FLORIDA DEPARTMENT OF ENVIRONMENTAL PROTECTION  
CERTIFIED CORNER RECORD**

*R03*

CORNER DESCRIPTION:

S. 1/4 corner of Section 19 ,  
Twp 40 S. , Rge 24 E. ,  
Tallahassee Base Meridian,  
CHARLOTTE County(s), Florida.



MONUMENTATION DESCRIPTION:

Describe original monument and accessories, or subsequent restoration. Give sources of information. (If no attempt was made to search for the original monument and accessories, this information is not necessary.)

Description of corner evidence found:

*SET CONCRETE MONUMENT BY SINGLE PROPORTION*

State method(s) to determine corner location (lost corners only):

HORIZONTAL POSITION INFORMATION ( if determined ):

Latitude 26°58'34.10357" N Longitude 81°56'54.96124" W  
Y(Northing) 292761.465 m X(Easting) 205102.444 m Zone FLW  
Convergence 0°01'23.937" Scale factor 0.99994150

Coordinate determination (circle one):      Field traverse      GPS

Horizontal datum (circle one): NAD27 NAD83(1986) NAD83(1990) other (explain)

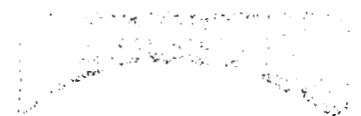
Order of accuracy as defined in Standards and Specifications for Geodetic Control Networks published by the Federal Geodetic Control Committee (circle one):

1st, 2nd, 3rd, class \_\_\_\_\_

or Minimum Technical Standards (Chapter 6IG17, F.A.C.) ratio of closure for field data (example 1:10,000), \_\_\_\_\_ . This does not specify an order of accuracy.

Control point(s) used for survey: *CHARLOTTE COUNTY HORIZONTAL CONTROL NETWORK INCLUDES HAYOLINE 2, PLACIDA 2, W260, PUNTPORT, & FLGPS 58 AS B ORDER STATIONS.*

Comments:



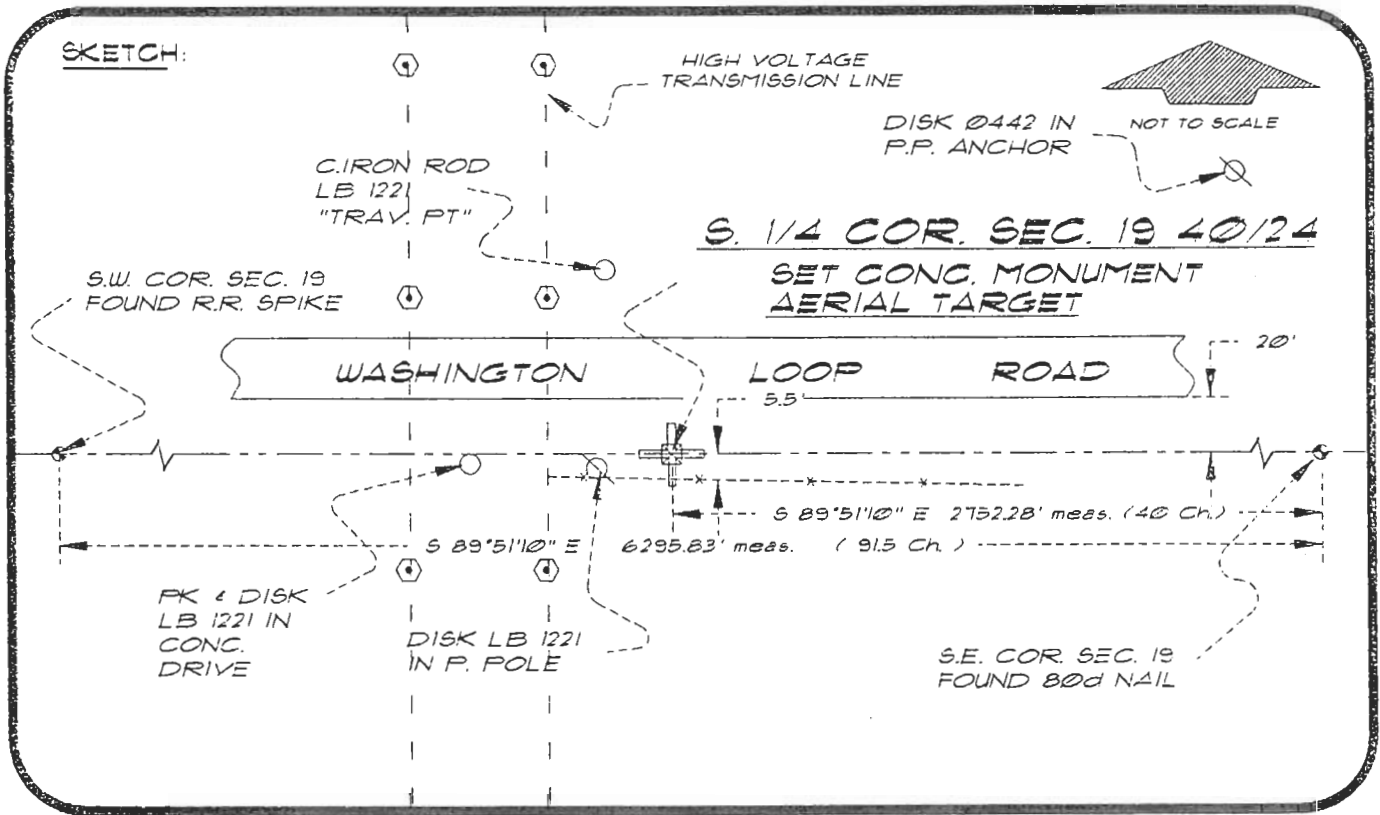
JAN 31 1973

SURVEY & MAPPING

051070

4024R03

DOC. #



BASIS OF BEARING SOLAR OBSERVATION REFER: FB 304/70  
 SET SURVEY MARKER POST 3.0' S'LY

REFERENCE MEASUREMENTS

Description	Bearing	Distance
DISK 0442 IN P.P. ANCHOR	N 67°57'35" E	202.75'
C. IRON ROD LB 1221	N 12°33'55" W	75.27'
FK & DISK IN CONC. DRIVE	S 89°39'05" W	75.34'
DISK LB 1221 IN P. POLE	S 70°40'48" W	17.47'

SURVEYORS CERTIFICATE: I certify the monument and accessories indicated above were field located on JUNE 13, 1994

*R. Ross*  
 SIGNATURE

PLS 4260

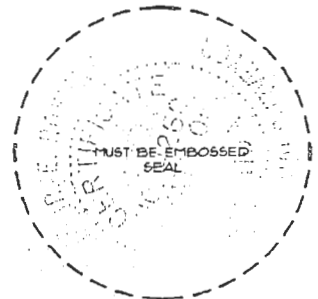
UPDATED JAN. 9, 1995

1/30/95  
 DATE

CHARLOTTE COUNTY SURVEY DEPT.  
 FIRM OR AGENCY

7000 FLORIDA STREET  
 ADDRESS

PUNTA GORDA, FLORIDA 33950  
 CITY STATE



508

SEND TO:

Department of Environmental Protection  
 Bureau of Survey and Mapping  
 3300 Commonwealth Boulevard  
 Mail Station 105  
 Tallahassee, Florida 32399

Completeness checked by: B. Benton  
 Accepted and filed: 3-1-95 Date  
 BLM. - ID. 30C0019 D.E.P. USE ONLY