

4024R05

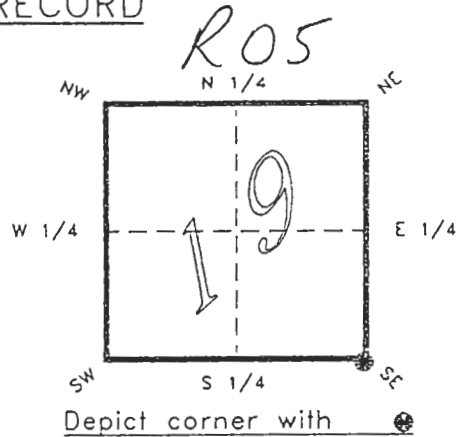
DOC. #

051071

FLORIDA DEPARTMENT OF ENVIRONMENTAL PROTECTION
CERTIFIED CORNER RECORD

CORNER DESCRIPTION:

S.E. corner of Section 19 ,
Twp 40 S. , Rge 24 E. ,
Tallahassee Base Meridian,
CHARLOTTE County(s), Florida.



MONUMENTATION DESCRIPTION:

Describe original monument and accessories, or subsequent restoration. Give sources of information. (If no attempt was made to search for the original monument and accessories, this information is not necessary.)

Description of corner evidence found:

80d NAIL

RECEIVED

JAN 31 1995

State method(s) to determine corner location (lost corners only):

SURVEY & MAPPING

HORIZONTAL POSITION INFORMATION (if determined):

Latitude 26°58'34.02924" N Longitude 81°56'24.54075" W

Y(Northing) 292759.546 m X(Easting) 205941.290 m Zone FLW

Convergence 0°01'37.736" Scale factor 0.99994161

Coordinate determination (circle one): Field traverse GPS

Horizontal datum (circle one): NAD27 NAD83(1986) NAD83(1990) other (explain)

Order of accuracy as defined in "Standards and Specifications for Geodetic Control Networks" published by the Federal Geodetic Control Committee (circle one):

1st, 2nd, 3rd, class 1 ,

or Minimum Technical Standards (Chapter 21HH-6, F.A.C.) ratio of closure for field data (example 1:10,000), _____ . This does not specify an order of accuracy.

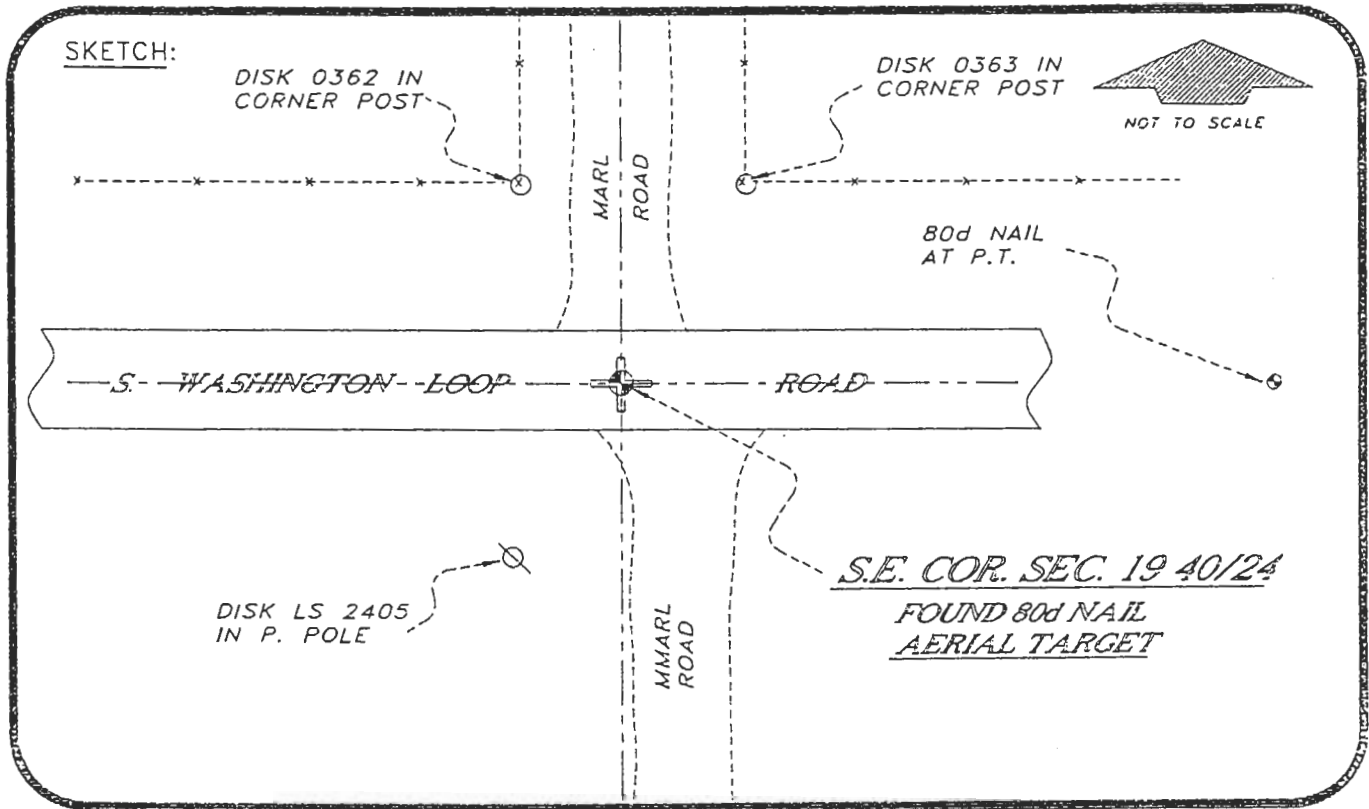
Control point(s) used for survey: CHARLOTTE COUNTY HORIZONTAL CONTROL NETWORK INCLUDES HAVOLINE 2, PLACIDA 2, W260, PUNTPORT, & FLGPS 58 AS B ORDER STATIONS.

Comments:

4024R05

DOC. #

051071



BASIS OF BEARING SOLAR OBSERVATION .REFER: FB 314/26

REFERENCE MEASUREMENTS

| Description | Bearing | Distance |
|--------------------------|---------------|------------------|
| DISK PLS 2405 IN P. POLE | S 15°35'43" W | 39.53' |
| DISK 0326 IN COR. POST | N 17°15'40" W | 43.02' |
| DISK 0363 IN COR. POST | N 29°23'46" E | 47.40' |
| 80d NAIL AT P.T. CURVE | S 89°39'42" E | 2046.06' |
| | | (2046.64 FDOT) |

SURVEYORS CERTIFICATE: I certify the monument and accessories indicated above were field located on JANUARY 25, 19 94.

[Signature]

PLS 4260

UPDATED JAN. 9, 1995

SIGNATURE

1/30/95

DATE

CHARLOTTE COUNTY SURVEY DEPT.

FIRM OR AGENCY

7000 FLORIDA STREET

ADDRESS

PUNTA GORDA, FLA. 33950

CITY

STATE

508



Completeness checked by: B. Sinton

Accepted and filed: 3-1-95 Date

B.L.M. - I.D. 30192029 D.N.R. USE ONLY

SEND TO:

Department of Environmental Protection
Bureau of Survey and Mapping
3900 Commonwealth Boulevard
Mail Station 105
Tallahassee, Florida 32399