

4024R13

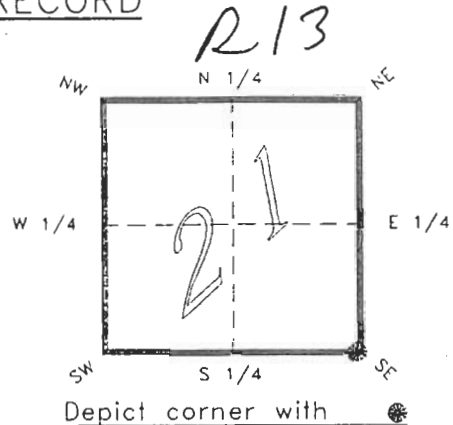
DOC. #

051072

FLORIDA DEPARTMENT OF ENVIRONMENTAL PROTECTION
CERTIFIED CORNER RECORD

CORNER DESCRIPTION:

S.E. corner of Section 21 ,
Twp 40 S. , Rge 24 E. ,
Tallahassee Base Meridian,
CHARLOTTE County(s), Florida.



MONUMENTATION DESCRIPTION:

Describe original monument and accessories, or subsequent restoration. Give sources of information. (If no attempt was made to search for the original monument and accessories, this information is not necessary.)

Description of corner evidence found:

6"x6" TAPERED CONCRETE MONUMENT (BROKEN) OF TYPE SET BY ANDREW DUFFIE (1926 ±)

State method(s) to determine corner location (lost corners only):

HORIZONTAL POSITION INFORMATION (if determined):

Latitude 26°58'32.98201" N Longitude 81°54'29.43479" W
Y(Northing) 292729.222 m X(Easting) 209115.362 m Zone FLW
Convergence 0°02'29.949" Scale factor 0.99994220

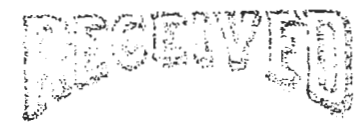
Coordinate determination (circle one): Field traverse GPS
Horizontal datum (circle one): NAD27 NAD83(1986) NAD83(1990) other (explain)

Order of accuracy as defined in "Standards and Specifications for Geodetic Control Networks" published by the Federal Geodetic Control Committee (circle one):
1st, 2nd, 3rd, class 1 ,

or Minimum Technical Standards (Chapter 21HH-6, F.A.C.) ratio of closure for field data (example 1:10,000), _____ . This does not specify an order of accuracy.

Control point(s) used for survey: *CHARLOTTE COUNTY HORIZONTAL CONTROL NETWORK INCLUDES HAVOLINE 2, PLACIDA 2, W260, PUNTPORT, & FLGPS 58 AS B ORDER STATIONS.*

Comments:



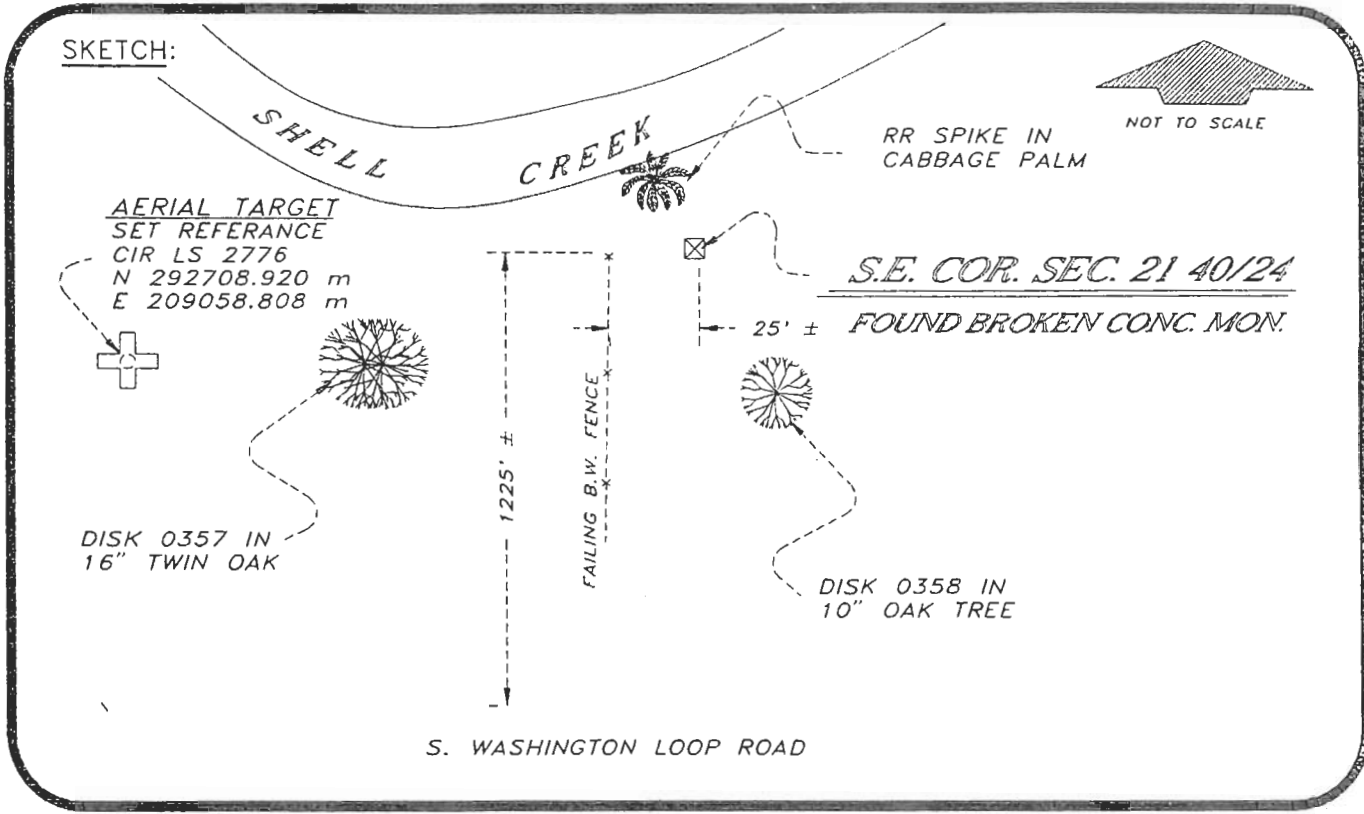
FEB 20 1995

SURVEY & MAPPING

4024R13

DOC. #

051072



BASIS OF BEARING SOLAR OBSERVATION
 SET SURVEY MARKER POST 3.0' E'LY

REFER: FB 304/20

REFERENCE MEASUREMENTS

Description	Bearing	Distance
DISK 0358 IN 10" OAK	S 18°37'05" E	62.70'
DISK 0357 IN 16" TWIN OAK	S 65°47'10" W	113.01'
R.R. SPIKE IN C. PALM	N 18°10'25" W	22.91'
REF CIR LS 2776	S 70°17'40" W	197.15'

SURVEYORS CERTIFICATE: I certify the monument and accessories indicated above were field located on JANUARY 20, 19 94

R. Ros
 SIGNATURE

PLS 4260

UPDATED 2/6/95

2-15-95
 DATE

CHARLOTTE COUNTY SURVEY DEPT.

FIRM OF AGENCY

7000 FLORIDA STREET

ADDRESS

PUNTA GORDA, FLA. 33950

CITY

STATE

508
 CLUTLAND



Completeness checked by: *B. Pint*
 Accepted and filed: *3-1-95*
 B.L.M. - I.D. 28212227 Date
 D.N.R. USE ONLY

SEND TO:

Department of Environmental Protection
 Bureau of Survey and Mapping
 3900 Commonwealth Boulevard
 Mail Station 105
 Tallahassee, Florida 32399