

4024R21

DOC. #

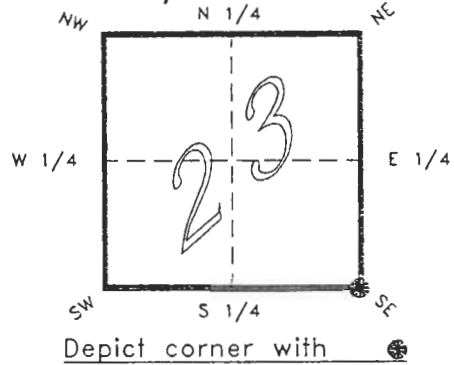
051074

FLORIDA DEPARTMENT OF ENVIRONMENTAL PROTECTION  
CERTIFIED CORNER RECORD

R21

CORNER DESCRIPTION:

S.E. corner of Section 23 ,  
Twp 40 S. , Rge 24 E. ,  
Tallahassee Base Meridian,  
CHARLOTTE County(s), Florida.



MONUMENTATION DESCRIPTION:

Describe original monument and accessories, or subsequent restoration. Give sources of information. (If no attempt was made to search for the original monument and accessories, this information is not necessary.)

Description of corner evidence found:

6"x6" CONCRETE MONUMENT OF TYPE SET BY A. DUFFIE  
AROUND 1926+/-

State method(s) to determine corner location (lost corners only):

HORIZONTAL POSITION INFORMATION ( if determined ):

Latitude 26°58'33.63815" N Longitude 81°52'30.38687" W  
Y(Northing) 292752.232 m X(Easting) 212398.101 m Zone FLW  
Convergence 0°03'23.953" Scale factor 0.99994307

Coordinate determination (circle one): Field traverse  GPS   
Horizontal datum (circle one): NAD27  NAD83(1986)  NAD83(1990)  other (explain)

Order of accuracy as defined in "Standards and Specifications for Geodetic Control Networks" published by the Federal Geodetic Control Committee (circle one):  
1st,  2nd,  3rd, class 1 ,

or Minimum Technical Standards (Chapter 21HH-6, F.A.C.) ratio of closure for field data (example 1:10,000), \_\_\_\_\_ . This does not specify an order of accuracy.

Control point(s) used for survey: CHARLOTTE COUNTY HORIZONTAL CONTROL NETWORK INCLUDES HAVOLINE 2, PLACIDA 2, W260, PUNTPORT, & FLGPS 58 AS B ORDER STATIONS.

Comments:

JAN 31 1995

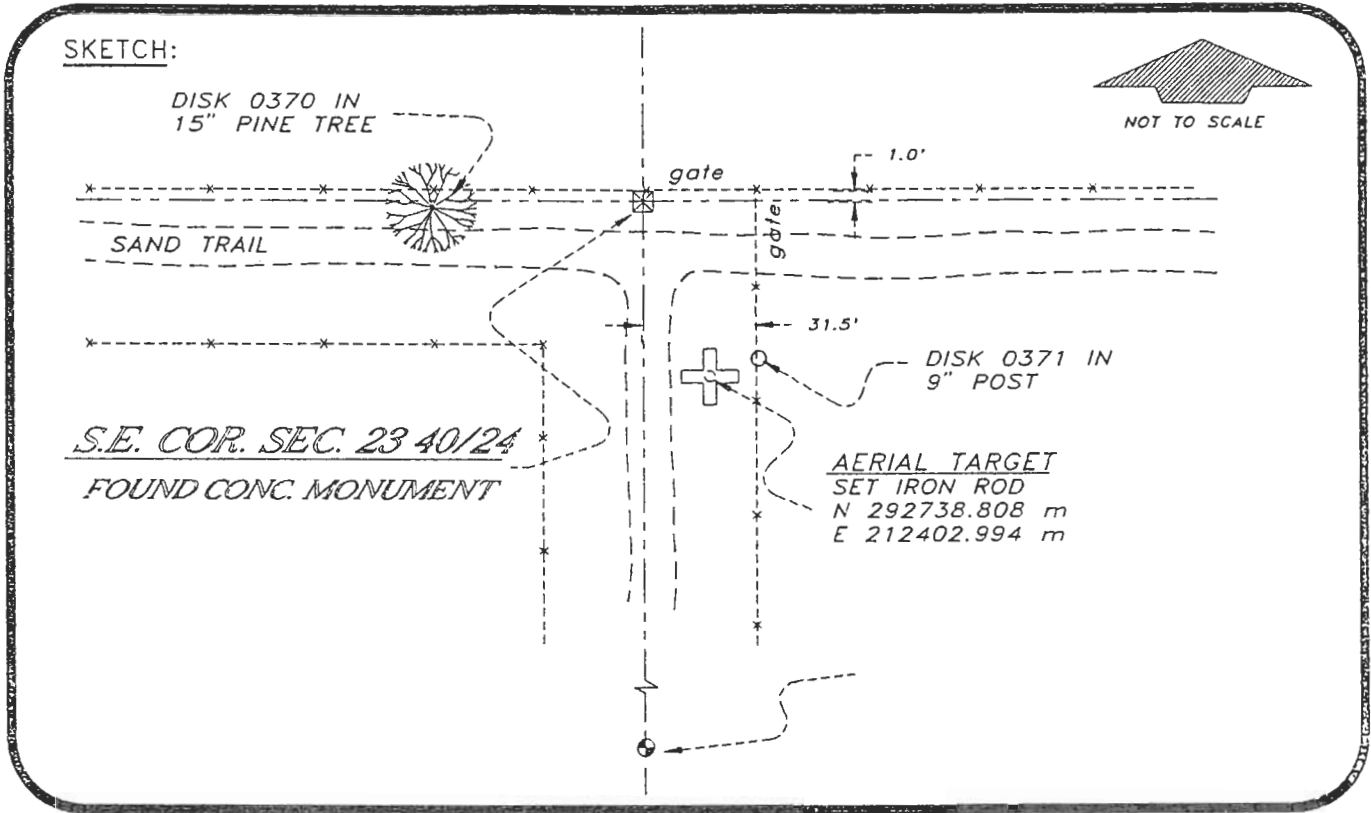
SURVEY & MAPPING

4024R21

DOC. #

051074

SKETCH:



BASIS OF BEARING SOLAR OBSERVATION REFER: FB 314/32

REFERENCE MEASUREMENTS

Description	Bearing	Distance
DISK 0370 IN 15" PINE	S 86°52'26" W	51.03'
DISK 0371 IN 9" POST	S 44°40'40" E	44.53'
CIR TCE LS 2324	S 00°35'04" W	1357.01'
AERIAL TARGET	S 19°58'13" W	46.88'

SURVEYORS CERTIFICATE: I certify the monument and accessories indicated above were field located on FEBRUARY 01, 19 94

*R. Rose*  
SIGNATURE

PLS 4260

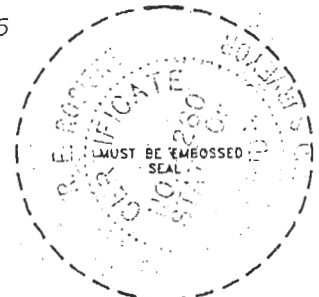
UPDATED JAN. 9, 1995

1/30/95  
DATE

CHARLOTTE COUNTY SURVEY DEPT.

7000 FLORIDA STREET  
ADDRESS

PUNTA GORDA, FLA. 33950  
CITY STATE



508

Completeness checked by: *B. Lantz*  
 Accepted and filed: *3-1-95*  
 B.L.M. - I.D. *26232425* Date  
 D.N.R. USE ONLY

SEND TO:

Department of Environmental Protection  
Bureau of Survey and Mapping  
3900 Commonwealth Boulevard  
Mail Station 105  
Tallahassee, Florida 32399