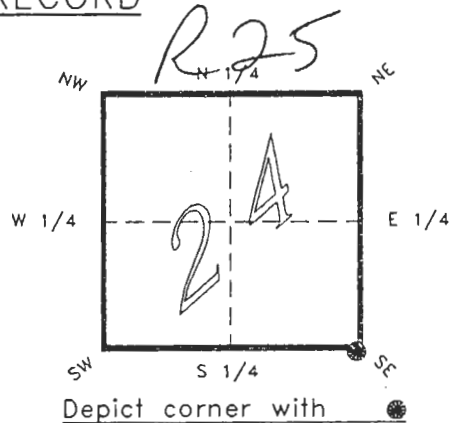


4024R25

FLORIDA DEPARTMENT OF ENVIRONMENTAL PROTECTION
CERTIFIED CORNER RECORD

CORNER DESCRIPTION:

S.E. corner of Section 24 ,
Twp 40 S. , Rge 24 E. ,
Tallahassee Base Meridian,
CHARLOTTE County(s), Florida.



MONUMENTATION DESCRIPTION:

Describe original monument and accessories, or subsequent restoration. Give sources of information. (If no attempt was made to search for the original monument and accessories, this information is not necessary.)

Description of corner evidence found:

4"x4" SANDSTONE MONUMENT 1.5' BELOW GRADE

State method(s) to determine corner location (lost corners only):

RECEIVED
JAN 31 1995
SURVEY & MAPPING

HORIZONTAL POSITION INFORMATION (if determined):

Latitude 26°58'32.62738" N Longitude 81°51'32.02561" W
Y(Northing) 292722.818 m X(Easting) 214007.452 m Zone FLW
Convergence 0°03'50.424" Scale factor 0.99994360

Coordinate determination (circle one): Field traverse GPS
Horizontal datum (circle one): NAD27 NAD83(1986) NAD83(1990) other (explain)

Order of accuracy as defined in "Standards and Specifications for Geodetic Control Networks" published by the Federal Geodetic Control Committee (circle one):
1st, 2nd, 3rd, class 1 ,

or Minimum Technical Standards (Chapter 21HH-6, F.A.C.) ratio of closure for field data (example 1:10,000), _____ . This does not specify an order of accuracy.

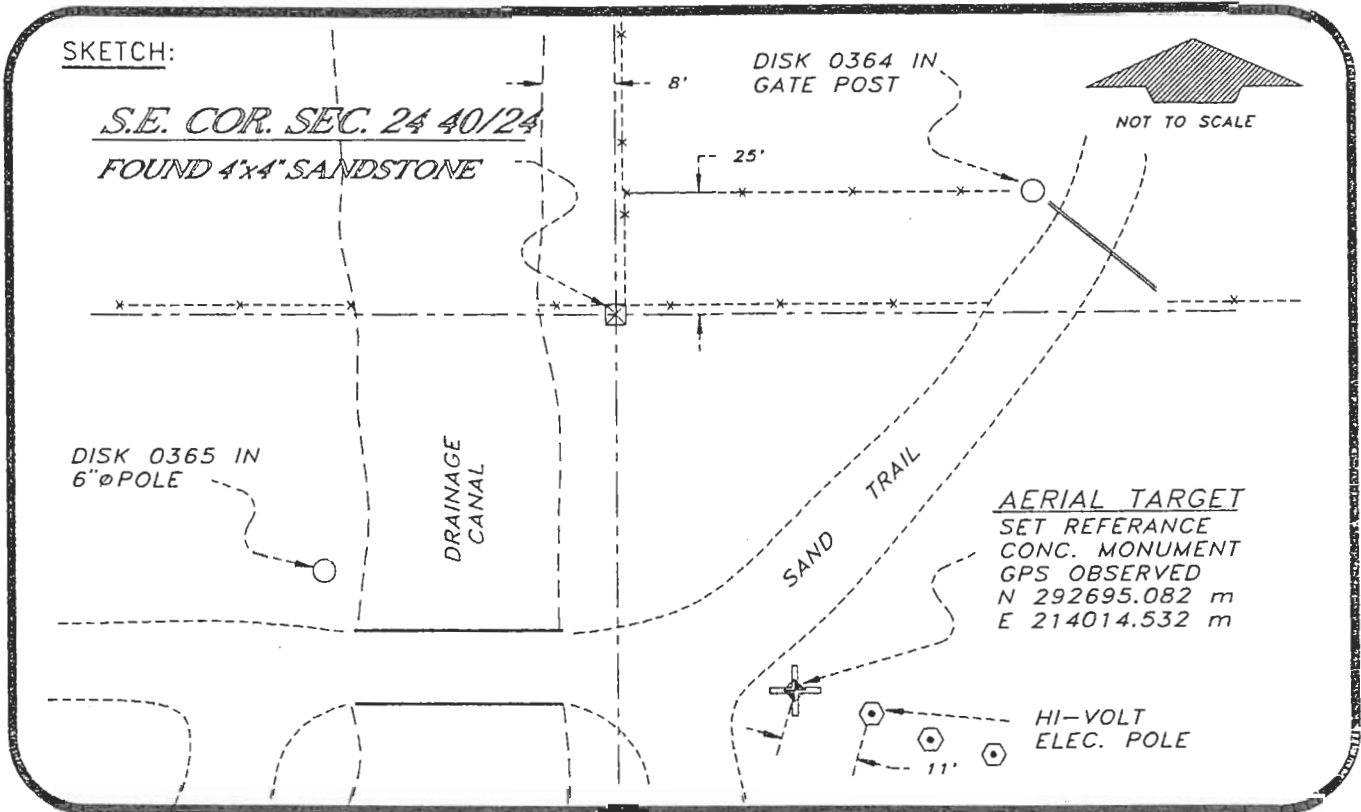
Control point(s) used for survey: CHARLOTTE COUNTY HORIZONTAL CONTROL NETWORK INCLUDES HAVOLINE 2, PLACIDA 2, W260, PUNTPORT, & FLGPS 58 AS B ORDER STATIONS.

Comments:

051075

4024R25

DOC. #



BASIS OF BEARING SOLAR OBSERVATION

REFER: FB 314/24

REFERENCE MEASUREMENTS

Description	Bearing	Distance
DISK 0365 IN POLE	S 42°10'22" W	80.46'
DISK 0364 IN GATE POST	N 73°50'32" E	93.92'
SET REF. CONC. MON.	S 14°15'24" E	93.92'

SURVEYORS CERTIFICATE: I certify the monument and accessories indicated above were field located on JANUARY 25, 19 94

R. P. Rose

PLS 4260

updated 1/23/95

SIGNATURE

1/30/95

DATE

CHARLOTTE COUNTY SURVEY DEPT.

FIRM OR AGENCY

7000 FLORIDA STREET

ADDRESS

PUNTA GORDA, FLA. 33950

CITY

STATE



507

Completeness checked by: *B. J. Hinton*

Accepted and filed: *3-17-95*

B.L.M. - I.D. 25241930 Date

U.S. DEPARTMENT OF THE INTERIOR BUREAU OF LAND MANAGEMENT

SEND TO:

Department of Environmental Protection
Bureau of Survey and Mapping
3900 Commonwealth Boulevard
Mail Station 105
Tallahassee, Florida 32399