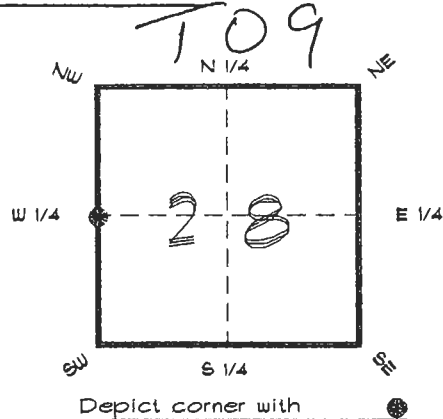


4024T09

**FLORIDA DEPARTMENT OF ENVIRONMENTAL PROTECTION
CERTIFIED CORNER RECORD**

CORNER DESCRIPTION:

W. 1/4 corner of Section 28,
Twp 40 S., Rge 24 E.,
Tallahassee Base Meridian,
CHARLOTTE County(s), Florida.



MONUMENTATION DESCRIPTION:

Describe original monument and accessories, or subsequent restoration. Give sources of information. (If no attempt was made to search for the original monument and accessories, this information is not necessary.)

Description of corner evidence found:

3"x3" CONCRETE MONUMENT SET BY R. STRICKLAND

State method(s) to determine corner location (lost corners only):

HORIZONTAL POSITION INFORMATION (if determined):

Latitude 26°58'06.74131" N Longitude 81°55'27.63327" W
Y(Northing) 291920.552 m X(Easting) 207511.017 m Zone FLW
Convergence 0°02'03.519" Scale factor 0.99994187

Coordinate determination (circle one): Field traverse GPS

Horizontal datum (circle one): NAD27 NAD83(1986) NAD83(1990) other (explain)

Order of accuracy as defined in Standards and Specifications for Geodetic Control Networks published by the Federal Geodetic Control Committee (circle one):
1st, 2nd, 3rd, class _____

or Minimum Technical Standards (Chapter 61G17, F.A.C.) ratio of closure for field data (example 1:10,000), _____ . This does not specify an order of accuracy.

Control point(s) used for survey: **CHARLOTTE COUNTY HORIZONTAL CONTROL NETWORK INCLUDES HAYOLINE 2, PLACIDA 2, W260, PUNTPORT, & FLGPS 58 AS B ORDER STATIONS.**

Comments:

RECEIVED

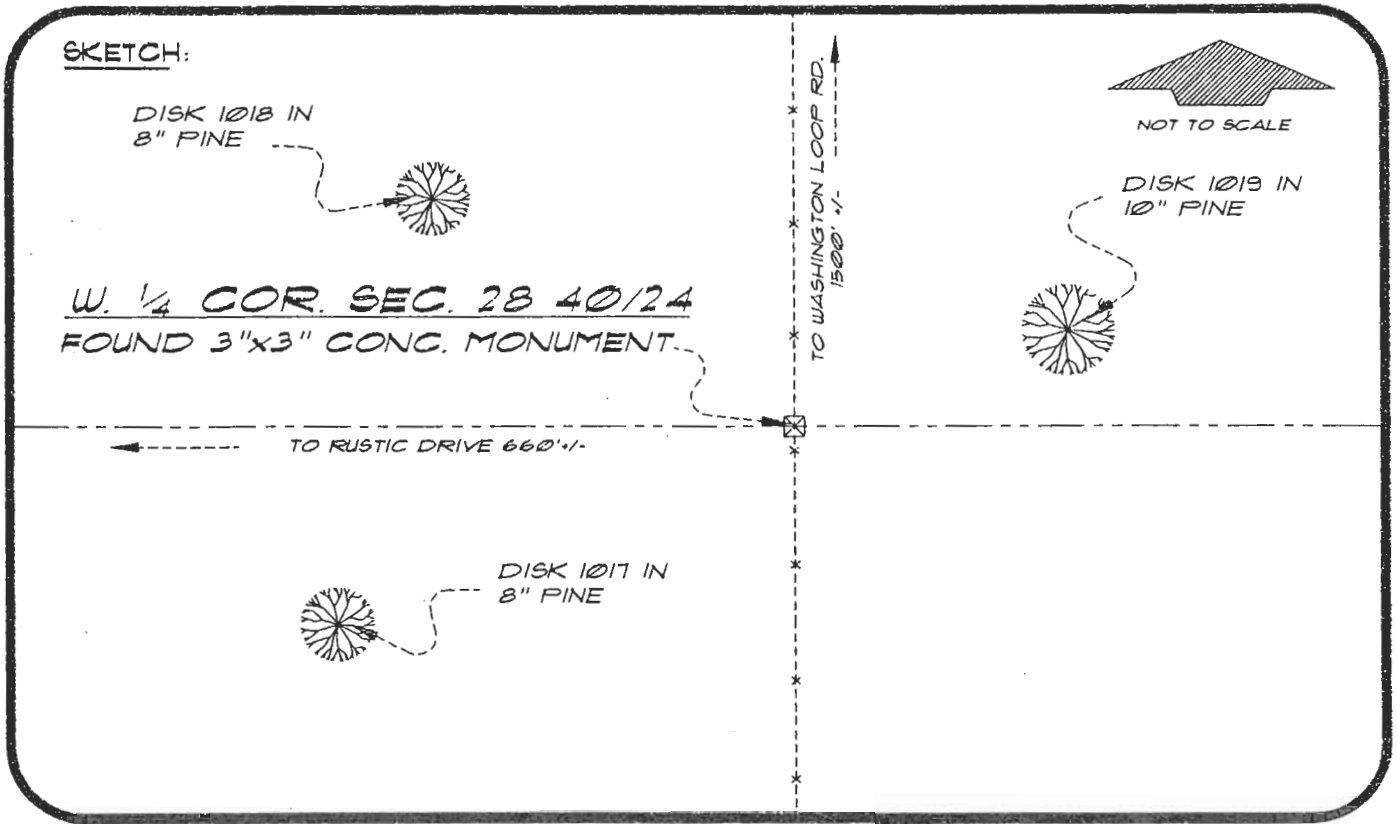
SEP 12 1994

SURVEY & MAPPING

0049754

4024T09

DOC. #



BASIS OF BEARING SOLAR OBSERVATION

REFER: FB 30/167

REFERENCE MEASUREMENTS

Description	Bearing	Distance
DISK 1017 IN 8" PINE	S 64°41'11" W	290.71'
DISK 1018 IN 10" PINE	N 58°56'19" W	300.48'
DISK 1019 IN 10" PINE	N 72°13'53" E	120.82'

SURVEYORS CERTIFICATE: I certify the monument and accessories indicated above were field located on AUGUST 29, 1994

R. Rose
SIGNATURE

PLS 4260

September 7, 1994
DATE

CHARLOTTE COUNTY SURVEY DEPT.
FIRM OR AGENCY

1000 FLORIDA STREET
ADDRESS

PUNTA GORDA, FLORIDA 33950
CITY STATE

508



SEND TO:

Department of Environmental Protection
Bureau of Survey and Mapping
3900 Commonwealth Boulevard
Mail Station 105
Tallahassee, Florida 32399

Completeness checked by: B. Linton
 Accepted and filed: 10-3-94 Date
 BLM - ID. 2900CL28 DEP. USE ONLY