

4024V03

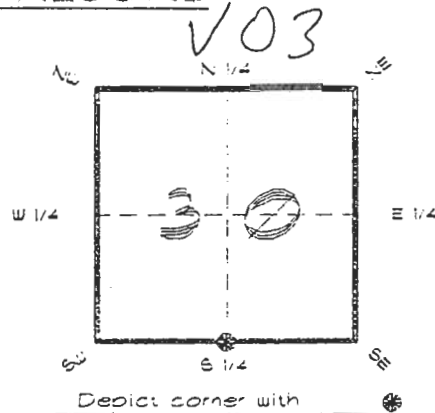
DOC. #

051082

**FLORIDA DEPARTMENT OF ENVIRONMENTAL PROTECTION**  
**CERTIFIED CORNER RECORD**

CORNER DESCRIPTION:

S. 1/4 corner of Section 30  
Twp 40 S., Rge 24 E.  
Tallahassee Base Meridian,  
CHARLOTTE County(s), Florida.



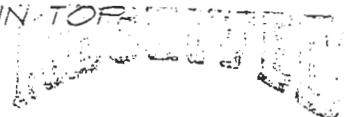
MONUMENTATION DESCRIPTION:

Describe original monument and accessories, or subsequent restoration. Give sources of information. (If no attempt was made to search for the original monument and accessories, this information is not necessary.)

Description of corner evidence found:

3"x5" CONCRETE MONUMENT WITH 1/2" IRON PIPE IN TOP

State method(s) to determine corner location (lost corners only):



JAN 31 1995

HORIZONTAL POSITION INFORMATION (if determined):

SURVEY & MAPPING

Latitude 26°57'41.39726" N Longitude 81°56'56.95752" W  
Y(Northing) 291139.310 m X(Easting) 205048.049 m Zone FLW  
Convergence 0°0'22.990" Scale factor 0.99994149

Coordinate determination (circle one): Field traverse GPS

Horizontal datum (circle one): NAD27 NAD83(1986) NAD83(1990) other (explain)

Order of accuracy as defined in Standards and Specifications for Geodetic Control Networks published by the Federal Geodetic Control Committee (circle one): 1st, 2nd, 3rd, class 1

or Minimum Technical Standards (Chapter 61G17, F.A.C.) ratio of closure for field data (example 1:10,000), \_\_\_\_\_ . This does not specify an order of accuracy.

Control point(s) used for survey: CHARLOTTE COUNTY HORIZONTAL CONTROL NETWORK INCLUDES HAVOLINE 2, FLACIDA 2, W260, PUNTPORT, 4 FLGPS 58 AS B ORDER STATIONS.

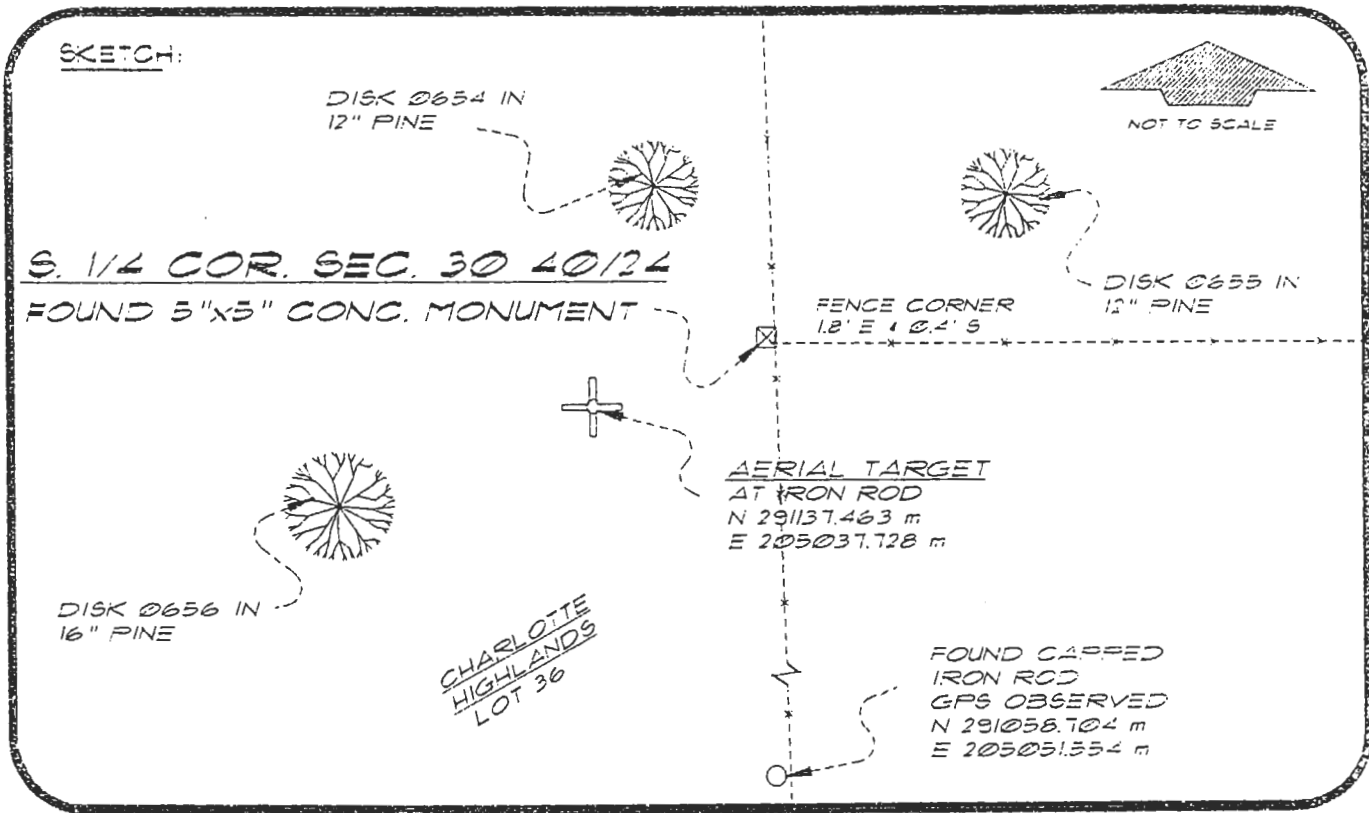
Comments:

051082

4024V03

DOC. #

SKETCH:



BASIS OF BEARING SOLAR OBSERVATION . REFER: FB 301/55  
 SET SURVEY MARKER POST 2.0' S'LY  
 REFERENCE MEASUREMENTS

Description	Bearing	Distance
DISK 0654 IN 12" PINE	N 12°10'22" W	46.30'
DISK 0655 IN 12" PINE	N 55°52'08" E	62.86'
DISK 0656 IN 16" PINE	S 76°14'52" W	130.68'
FOUND CAPPED IRON ROD	S 02°28'00" E	264.72'
AERIAL TARGET	S 79°52'41" W	34.40'

SURVEYORS CERTIFICATE: I certify the monument and accessories indicated above were field located on JUNE 14, 1994

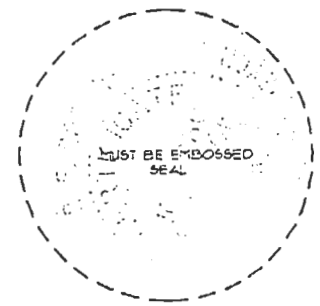
R. P. ROSE PLS 4260

UPDATED 1/23/95

SIGNATURE 1/30/95  
DATE

CHARLOTTE COUNTY SURVEY DEPT.  
FIRM OR AGENCY  
1000 FLORIDA STREET  
ADDRESS  
PUNTA GORDA, FLORIDA 33950  
CITY STATE

508



Completeness checked by: B. Linton  
Accepted and filed: 3-1-95 Date  
BLM. - 15. 31CL0030 DEP. USE ONLY

SEND TO:  
Department of Environmental Protection  
Bureau of Survey and Mapping  
3900 Commonwealth Boulevard  
Mail Station 105  
Tallahassee, Florida 32399