

4024V09

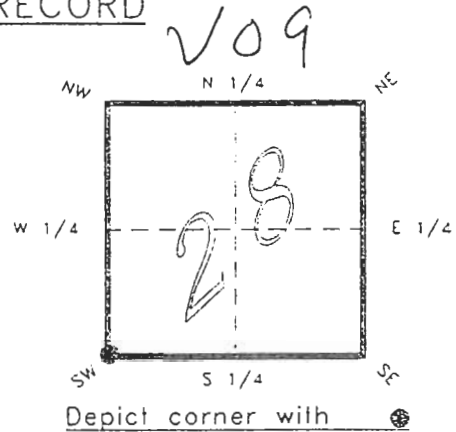
DOC. #

051080

FLORIDA DEPARTMENT OF ENVIRONMENTAL PROTECTION
CERTIFIED CORNER RECORD

CORNER DESCRIPTION:

S.W. corner of Section 28
Twp 40 S., Rge 24 E.
Tallahassee Base Meridian,
CHARLOTTE County(s), Florida.



MONUMENTATION DESCRIPTION:

Describe original monument and accessories, or subsequent restoration. Give sources of information. (If no attempt was made to search for the original monument and accessories, this information is not necessary.)

NONE FOUND, ONE STUMP AT WITNESS TREE LOCATION WAS REPORTED FOUND BY W. H. MARTIN DURING SURVEY DEC. 1964.

Description of corner evidence found:

3"x3" CONCRETE MONUMENT SET BY W. H. MARTIN LS 1389 DURING SURVEY DEC. 1964.

RECEIVED

JAN 31 1995

HORIZONTAL POSITION INFORMATION (if determined):

Latitude 26°57'39.87954" N Longitude 81°55'26.04974" W
Y(Northing) 291093.858 m X(Easting) 207555.201 Zone FLW
Convergence 0°02'04.205" Scale factor 0.99994188

Coordinate determination (circle one):

Field traverse (circled) GPS (circled)

Horizontal datum (circle one): NAD27 NAD83(1986) NAD83(1990) (circled) other (explain)

Order of accuracy as defined in "Standards and Specifications for Geodetic Control Networks" published by the Federal Geodetic Control Committee (circle one): 1st, 2nd (circled), 3rd, class 1

or Minimum Technical Standards (Chapter 21HH-6, F.A.C.) ratio of closure for field data (example 1:10,000), This does not specify an order of accuracy.

Control point(s) used for survey: CHARLOTTE COUNTY HORIZONTAL CONTROL NETWORK INCLUDES HAVOLINE 2, PLACIDA 2, W260, PUNTPORT, & FLGPS 58 AS B ORDER STATIONS.

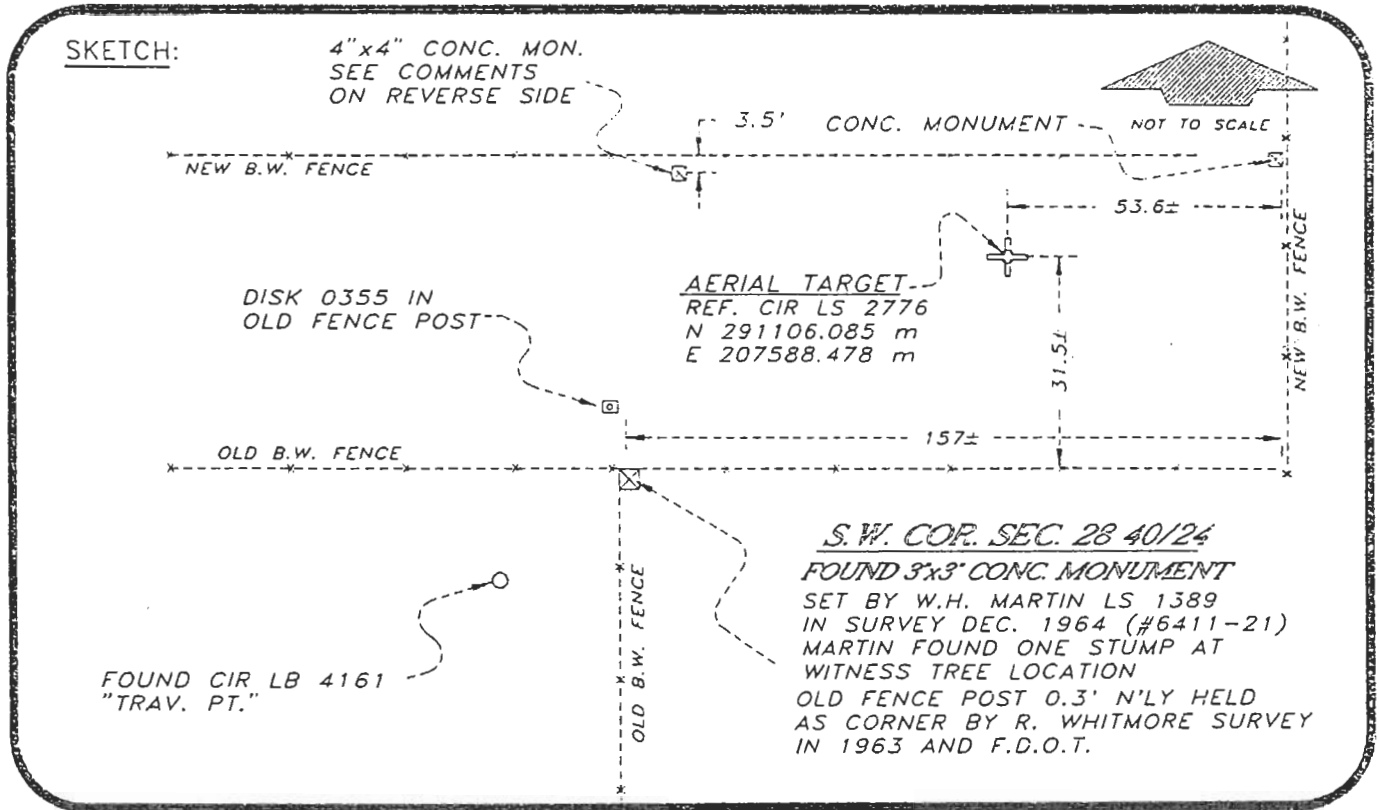
Comments:

DAVIS SURVEY INDICATES SECTION CORNER N'LY AT FOUND 4"x4" CONC. MON. DESCRIPTIONS FOR SEVERAL PARCELS NW'LY APPEAR TO HAVE HELD THIS POSITION.

4024V09

DOC. #

051080



BASIS OF BEARING SOLAR OBSERVATION REFER: FB 304/18

SET SURVEY MARKER POST 3.0' S'LY
REFERENCE MEASUREMENTS

Description	Bearing	Distance
DISK 0355 IN OLD F. POST	N 08°32'15" W	4.60'
"TRAV. PT. LB 4161"	S 41°32'10" W	18.57'
REF CIR LS 2776	N 69°51'35" E	116.32'
CONC. MONUMENT	N 66°48'21" E	175.87'
4"x4" CONC. MON.	N 04°17'22" E	66.58'

SURVEYORS CERTIFICATE: I certify the monument and accessories indicated above
were field located on JANUARY 20, 19 94.

R. Rose
SIGNATURE PLS 4260

UPDATED 1/24/95

1/30/95
DATE

CHARLOTTE COUNTY SURVEY DEPT.
FIRM OR AGENCY

7000 FLORIDA STREET
ADDRESS

PUNTA GORDA, FLA. 33950
CITY STATE

508



Completeness checked by: B. Sinton
Accepted and filed: 3-1-95
B.L.M. - I.D. 32292833 Date
D.N.R. USE ONLY

SEND TO:
Department of Environmental Protection
Bureau of Survey and Mapping
3900 Commonwealth Boulevard
Mail Station 105
Tallahassee, Florida 32399