

4024V13

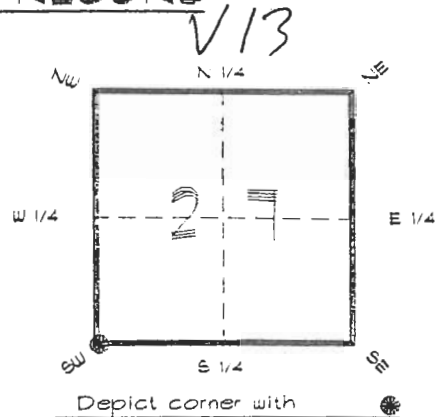
DOC. #

051079

**FLORIDA DEPARTMENT OF ENVIRONMENTAL PROTECTION  
CERTIFIED CORNER RECORD**

CORNER DESCRIPTION:

S. W. corner of Section 27  
Twp 40 S., Rge 24 E.  
Tallahassee Base Meridian,  
CHARLOTTE County(s), Florida.



MONUMENTATION DESCRIPTION:

Describe original monument and accessories, or subsequent restoration. Give sources of information. (If no attempt was made to search for the original monument and accessories, this information is not necessary.)

Description of corner evidence found:  
CONCRETE MONUMENT, "DENI" L.S. 3950

State method(s) to determine corner location (lost corners only):

HORIZONTAL POSITION INFORMATION (if determined):

Latitude 26°57'41.47518" N Longitude 81°54'27.43905" W  
Y(Northing) 291144.045 m X(Easting) 209171.554 m Zone FLW  
Convergence 0°02'30.781" Scale factor 0.99994221

Coordinate determination (circle one): Field traverse  GPS

Horizontal datum (circle one): NAD27 NAD83(1986) NAD83(1990) other (explain)

Order of accuracy as defined in Standards and Specifications for Geodetic Control Networks published by the Federal Geodetic Control Committee (circle one):  
1st, 2nd, 3rd, class 1

or Minimum Technical Standards (Chapter 6IG17, F.A.C.) ratio of closure for field data (example 1:10,000), \_\_\_\_\_ This does not specify an order of accuracy.

Control point(s) used for survey: CHARLOTTE COUNTY HORIZONTAL CONTROL NETWORK INCLUDES HAYOLINE 2, FLACIDA 2, W260, FUNTPORT, 4 FLGPS 58 AS B ORDER STATIONS.

Comments:

**RECEIVED**

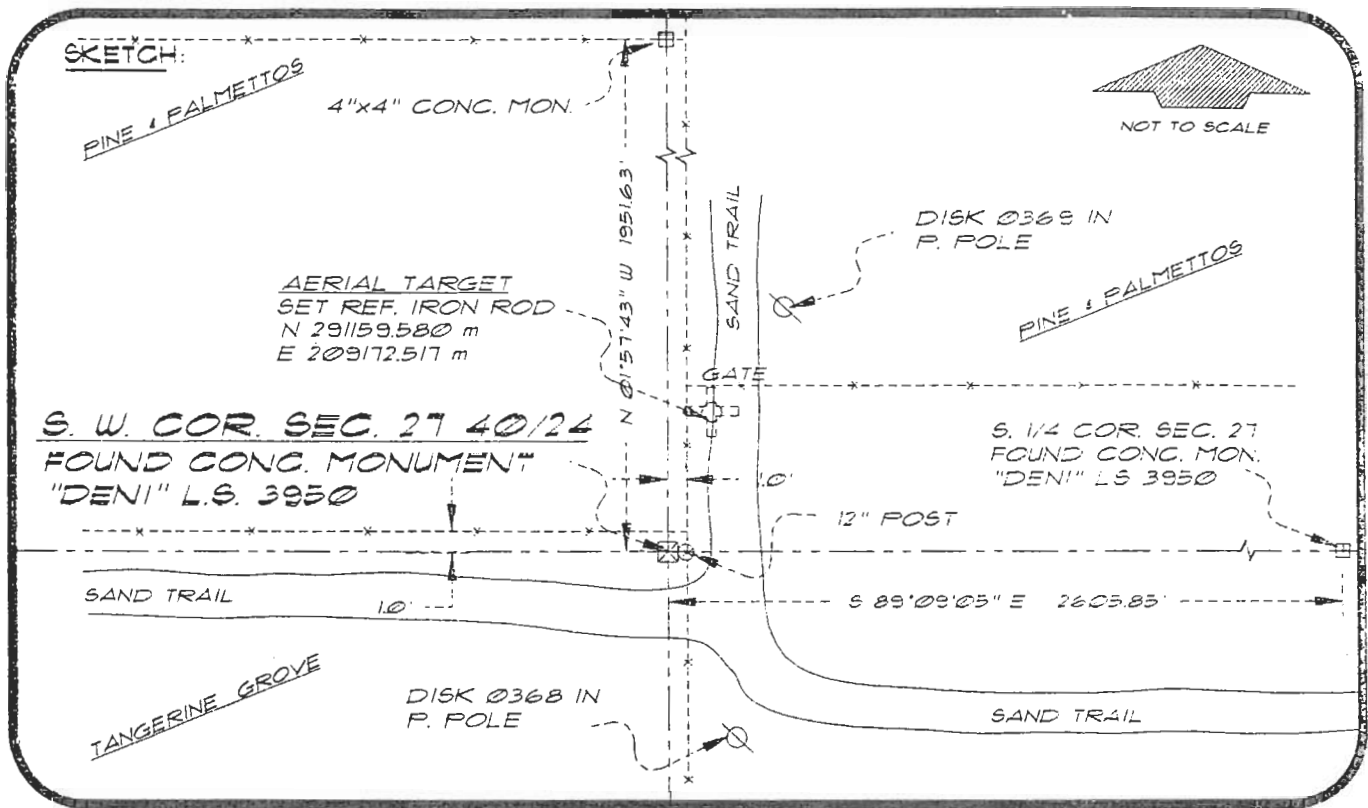
FEB 20 1995

SURVEY & MAPPING

4024V13

DOC. #

051079



BASIS OF BEARING SOLAR OBSERVATION REFER: FB 304/29  
 SET SURVEY MARKER POST 3.0' W'LY

REFERENCE MEASUREMENTS

Description	Bearing	Distance
DISK Ø369 IN P. POLE	N 09°39'08" E	154.89'
DISK Ø368 IN P. POLE	S 04°34'12" E	68.16'
12" WOOD POST 5' HIGH	E'LY	0.44'
SET REF. IRON ROD	N 03°35'21" E	51.07'

SURVEYORS CERTIFICATE: I certify the monument and accessories indicated above were field located on JANUARY 28, 1994

*R. Ross*  
 SIGNATURE

PLS 4260

UPDATED 2/2/95

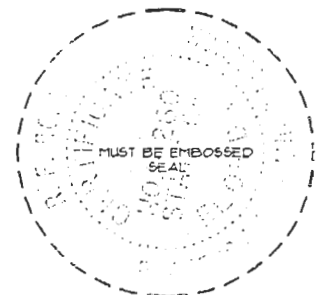
2-15-95  
 DATE

CHARLOTTE COUNTY SURVEY DEPT.  
 FIRM OR AGENCY

7000 FLORIDA STREET  
 ADDRESS

PUNTA GORDA, FLORIDA 33950  
 CITY STATE

508



Completeness checked by: *B. Hunt*  
 Accepted and filed: 3-1-95  
 BLM - ID. 33282734 Date  
 DEF. USE ONLY

SEND TO:

Department of Environmental Protection  
 Bureau of Survey and Mapping  
 3900 Commonwealth Boulevard  
 Mail Station 105  
 Tallahassee, Florida 32399