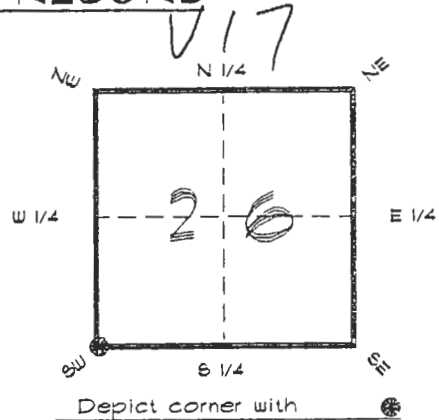


4024V17

FLORIDA DEPARTMENT OF ENVIRONMENTAL PROTECTION
CERTIFIED CORNER RECORD

CORNER DESCRIPTION:

S. W. corner of Section 26,
Twp 40 S., Rge 24 E.,
Tallahassee Base Meridian,
CHARLOTTE County(s), Florida.



MONUMENTATION DESCRIPTION:

Describe original monument and accessories, or subsequent restoration. Give sources of information. (If no attempt was made to search for the original monument and accessories, this information is not necessary.)

Description of corner evidence found:
CONCRETE MONUMENT "DENI" LS 3950

RECEIVED

JAN 31 1995

State method(s) to determine corner location (lost corners only):

SURVEY & MAPPING

HORIZONTAL POSITION INFORMATION (if determined):

Latitude 26°57'40.70121" N Longitude 81°53'29.84984" W
Y(Northing) 291121.486 m X(Easting) 210759.803 m Zone FLW
Convergence 0°02'56.890" Scale factor 0.99994261

Coordinate determination (circle one): Field traverse (GPS)

Horizontal datum (circle one): NAD27 NAD83(1986) NAD83(1990) other (explain)

Order of accuracy as defined in Standards and Specifications for Geodetic Control Networks published by the Federal Geodetic Control Committee (circle one): 1st, 2nd, 3rd, class 1

or Minimum Technical Standards (Chapter 6IG17, F.A.C.) ratio of closure for field data (example 1:10,000), This does not specify an order of accuracy.

Control point(s) used for survey: CHARLOTTE COUNTY HORIZONTAL CONTROL NETWORK INCLUDES HAYOLINE 2, FLACIDA 2, W260, PUNTPORT, & FLGPS 58 AS B ORDER STATIONS.

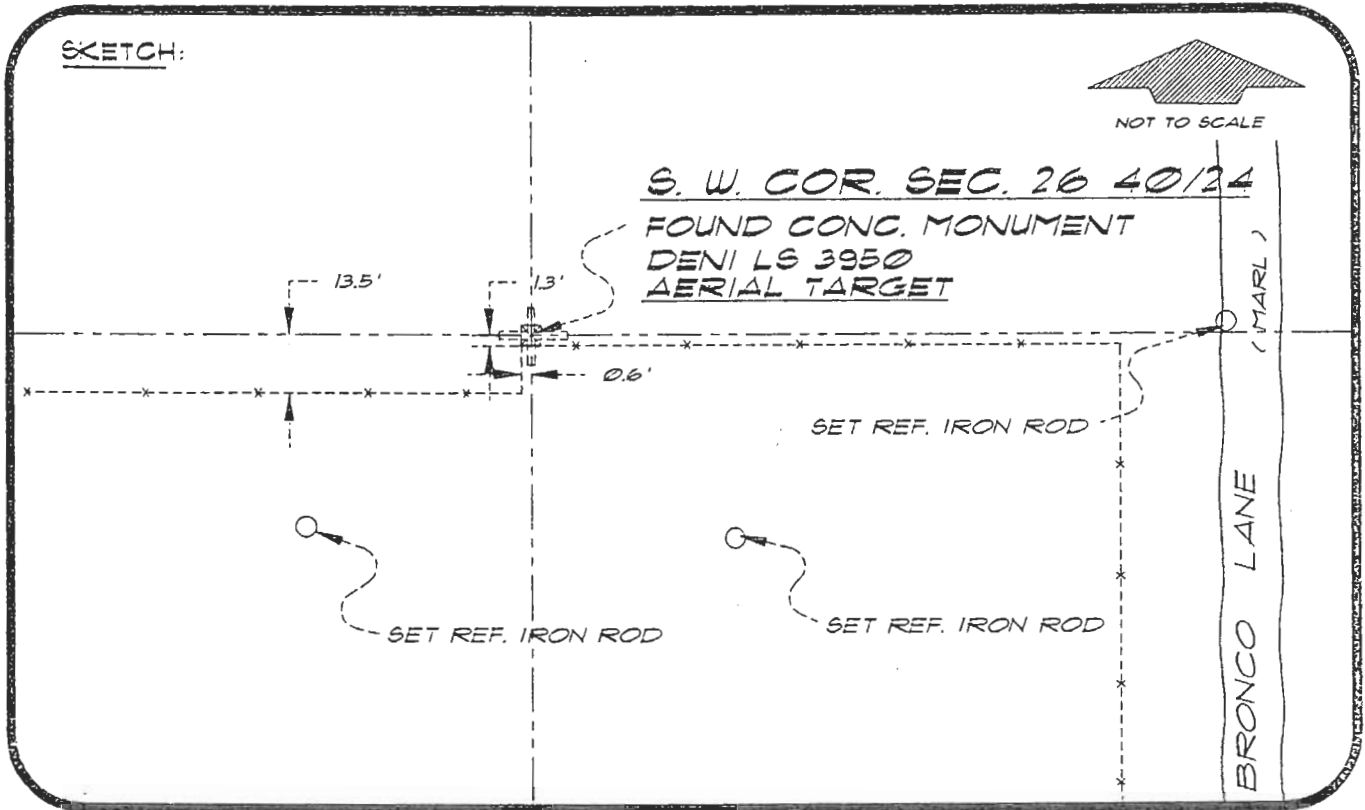
Comments:

4024V17

DOC. #

051078

SKETCH:



BASIS OF BEARING SOLAR OBSERVATION

REFER: FB 30/58

REFERENCE MEASUREMENTS

<u>Description</u>	<u>Bearing</u>	<u>Distance</u>
SET REF. IRON ROD	S 88°57'18" E	318.76'
SET REF. IRON ROD	S 39°10'16" E	85.68'
SET REF. IRON ROD	S 40°55'57" W	79.51'

SURVEYORS CERTIFICATE: I certify the monument and accessories indicated above were field located on JUNE 15, 1994

R. P. Roso

PLS 4260

UPDATED JAN. 11, 1995

SIGNATURE

1/30/95

DATE

CHARLOTTE COUNTY SURVEY DEPT.

FIRM OR AGENCY

7000 FLORIDA STREET

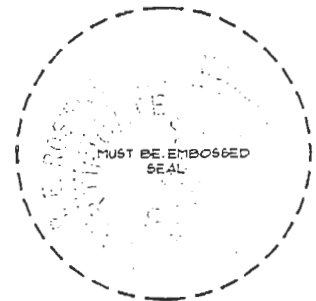
ADDRESS

PUNTA GORDA, FLORIDA 33950

CITY

STATE

508



Completeness checked by: B. Linton
 Accepted and filed: 3-1-95 Date
 BLM. - ID. 34272635 DEP. USE ONLY

SEND TO:

Department of Environmental Protection
Bureau of Survey and Mapping
3900 Commonwealth Boulevard
Mail Station 105
Tallahassee, Florida 32399