

4024V25

FLORIDA DEPARTMENT OF ENVIRONMENTAL PROTECTION
CERTIFIED CORNER RECORD

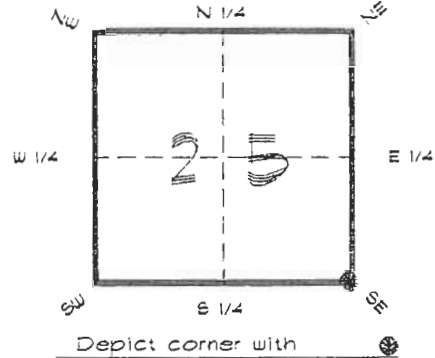
CORNER DESCRIPTION:

S. E. corner of Section 25

Twp 40 S., Rge 24 E.

Tallahassee Base Meridian,

CHARLOTTE County(s), Florida.



MONUMENTATION DESCRIPTION:

Describe original monument and accessories, or subsequent restoration. Give sources of information. (If no attempt was made to search for the original monument and accessories, this information is not necessary.)

Description of corner evidence found:

CONCRETE MONUMENT ADJACENT TO FENCE POST

State method(s) to determine corner location (lost corners only):

HORIZONTAL POSITION INFORMATION (if determined):

Latitude 26°57'39.91417" N Longitude 81°51'32.24778" W

Y(Northing) 291100.464 m X(Easting) 214003.136 m Zone FLW

Convergence 0°03'50.208" Scale factor 0.99994360

Coordinate determination (circle one): Field traverse GPS

Horizontal datum (circle one): NAD27 NAD83(1986) NAD83(1990) other (explain)

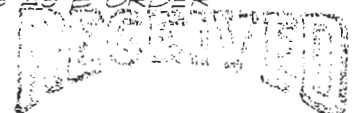
Order of accuracy as defined in Standards and Specifications for Geodetic Control Networks published by the Federal Geodetic Control Committee (circle one):

1st, 2nd, 3rd class

or Minimum Technical Standards (Chapter 61G17, F.A.C.) ratio of closure for field data (example 1:10,000), _____ . This does not specify an order of accuracy.

Control point(s) used for survey: CHARLOTTE COUNTY HORIZONTAL CONTROL NETWORK INCLUDES HAVOLINE 2, FLACIDA 2, W260, PUNTPORT, & FLGPS 58 AS 2ND ORDER STATIONS.

Comments:

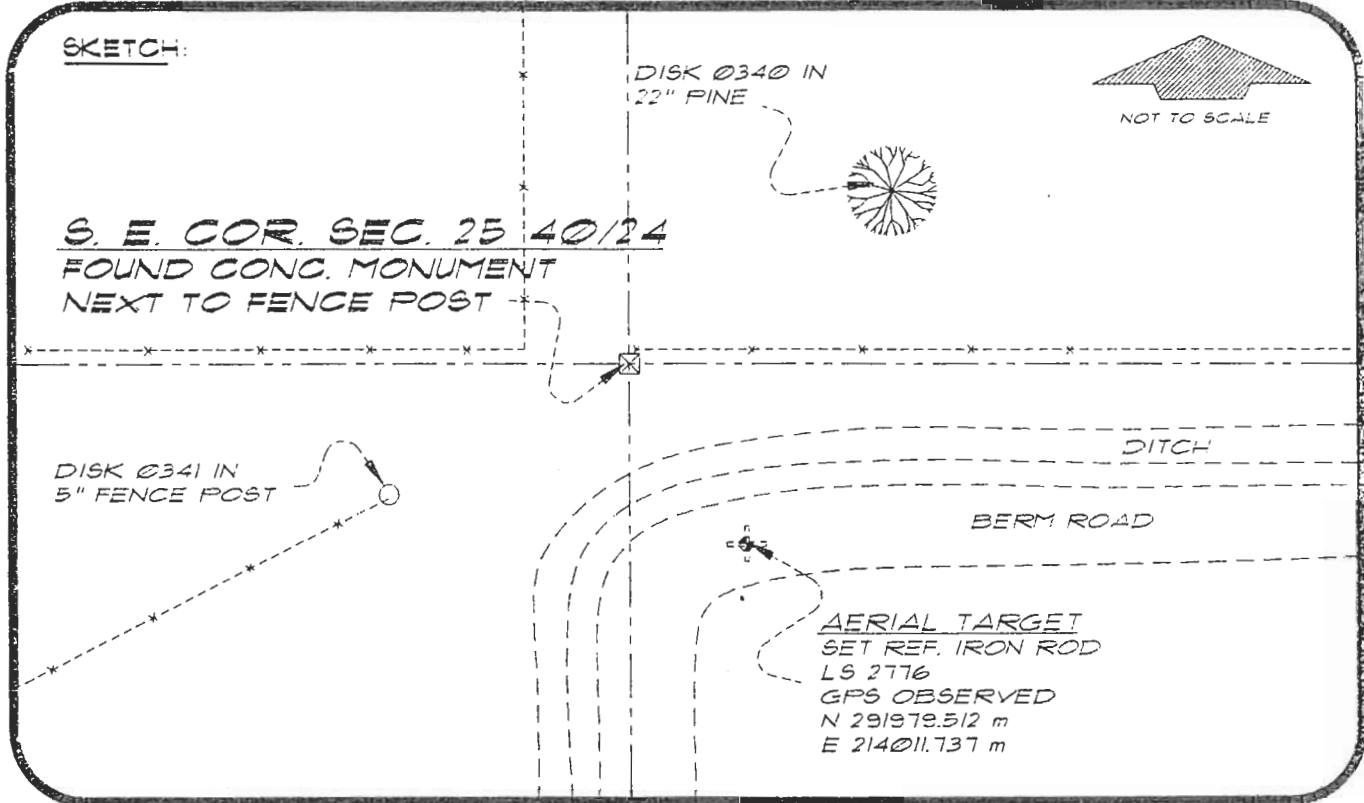


FEB 20 1995

4024V25

DOC. #

051077



BASIS OF BEARING SOLAR OBSERVATION

REFER: FB 304/03

SET SURVEY MARKER POST 3.0' N'LY

REFERENCE MEASUREMENTS

<u>Description</u>	<u>Bearing</u>	<u>Distance</u>
DISK Ø340 IN 22" PINE TREE	N 57°51'00" E	70.00'
DISK Ø341 IN 5" FENCE POST	S 52°34'52" W	65.63'
SET REF. IRON ROD	S 22°15'14" E	74.31'

SURVEYORS CERTIFICATE: I certify the monument and accessories indicated above were field located on DECEMBER 17, 1993

R. Rose

PLS 4260

UPDATED 2/2/95

SIGNATURE

2-15-95

DATE

CHARLOTTE COUNTY SURVEY DEPT.

FIRM OR AGENCY

1000 FLORIDA STREET

ADDRESS

PUNTA GORDA, FLORIDA 33950

CITY

STATE

507



Completeness checked by: *R. Rose*

Accepted and filed: 3-7-1995 Date

BLM - ID. 36253031 DEP. USE ONLY

SEND TO:

Department of Environmental Protection
Bureau of Survey and Mapping
3900 Commonwealth Boulevard
Mail Station 105
Tallahassee, Florida 32399