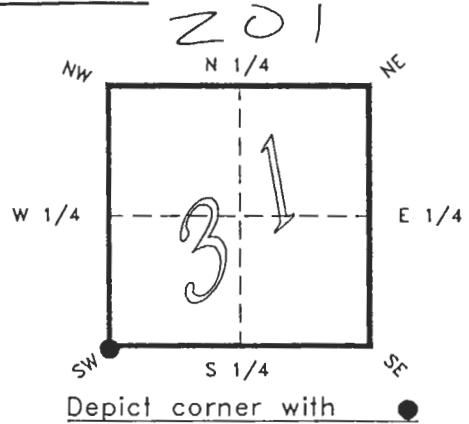


4024Z01(000)

FLORIDA DEPARTMENT OF ENVIRONMENTAL PROTECTION
CERTIFIED CORNER RECORD

CORNER DESCRIPTION:

S.W. corner of Section 31 ,
Twp 40 S. , Rge 24 E. ,
Tallahassee Base Meridian,
CHARLOTTE County(s), Florida.



MONUMENTATION DESCRIPTION:

Describe original monument and accessories, or subsequent restoration. Give sources of information. (If no attempt was made to search for the original monument and accessories, this information is not necessary.)

Description of corner evidence found:

80d NAIL ON SURFACE

State method(s) to determine corner location (lost corners only):

HORIZONTAL POSITION INFORMATION (if determined):

Latitude 26°56'48.92654" N Longitude 81°57'35.15244" W
Y(Northing) 289524.052 m X(Easting) 203995.202 m Zone FLW
Convergence 0°01'05.647" Scale factor 0.99994137

Coordinate determination (circle one): Field traverse GPS

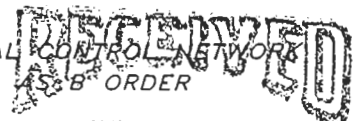
Horizontal datum (circle one): NAD27 NAD83(1986) NAD83(1990) other (explain)

Order of accuracy as defined in "Standards and Specifications for Geodetic Control Networks" published by the Federal Geodetic Control Committee (circle one):
1st, 2nd, 3rd, class 1 ,

or Minimum Technical Standards (Chapter 21HH-6, F.A.C.) ratio of closure for field data (example 1:10,000), _____ . This does not specify an order of accuracy.

Control point(s) used for survey: CHARLOTTE COUNTY HORIZONTAL CONTROL NETWORK INCLUDES HAVOLINE 2, PLACIDA 2, W260, PUNTPORT, & FLGPS 58 AS B ORDER STATIONS.

Comments:



JUN 30 1997

SURVEY & MAPPING

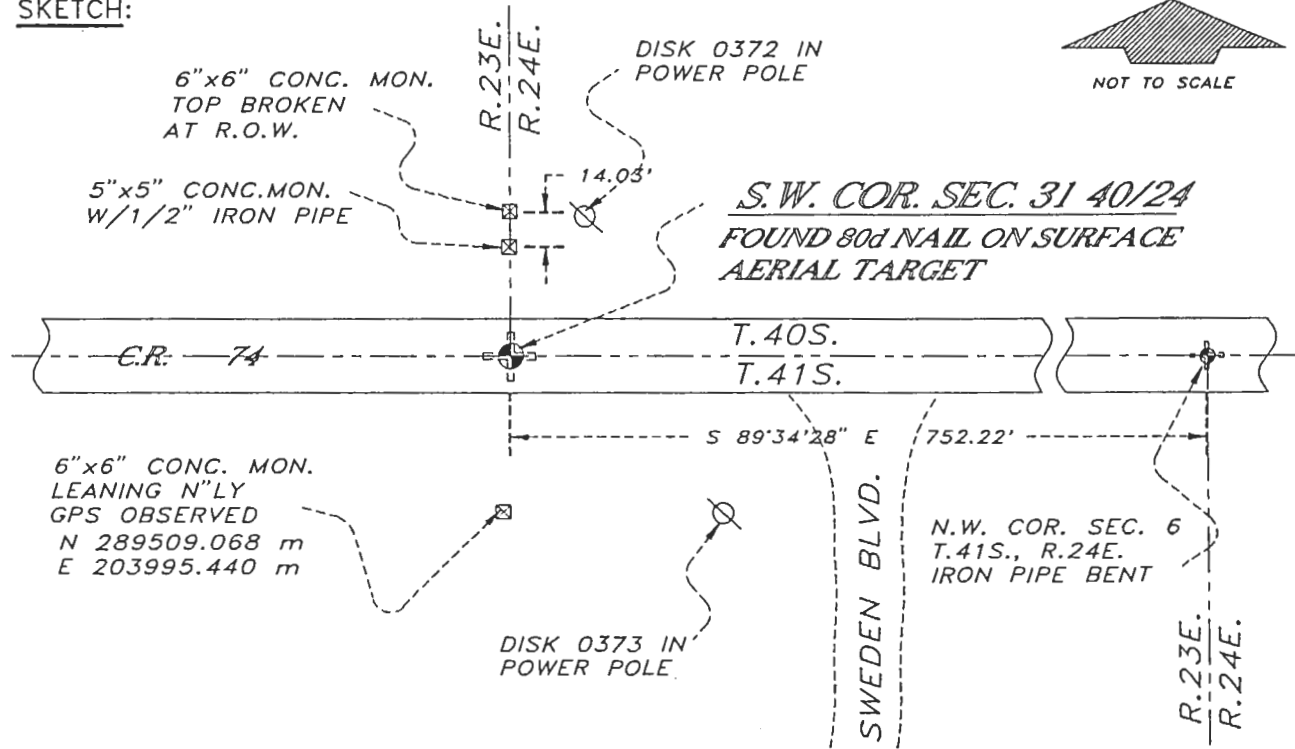
210000

059846

4024Z01

DOC. #

SKETCH:



BASIS OF BEARING SOLAR OBSERVATION REFER: FB 314/34

REFERENCE MEASUREMENTS

| Description | Bearing | Distance |
|---------------------------------|---------------|----------|
| DISK 0372 IN P. POLE | N 22°00'04" E | 50.99' |
| DISK 0373 IN U. POLE | S 58°55'05" E | 85.33' |
| 5"x5" CONC. MON. | N 02°59'58" E | 36.16' |
| 6"x6" CONC. MON. (GPS OBSERVED) | S 00°55'43" E | 49.17' |

SURVEYORS CERTIFICATE: I certify the monument and accessories indicated above were field located on FEBRUARY, 19 94.

Signature: R. P. Ross

PLS 4260

UPDATED JAN. 11, 1995

CORRECTION TO S.P.C. 6/26/97 REF: DOC 51083

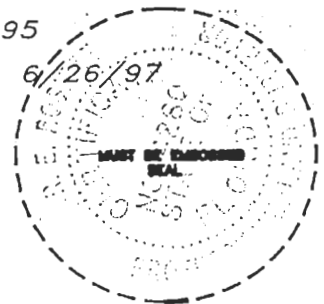
DATE: 6/25/97

CHARLOTTE COUNTY SURVEY DEPT.

7000 FLORIDA STREET

PUNTA GORDA, FLA. 33950

508 CLEVELAND



Completeness checked by: [Signature]

Accepted and filed: 7-1-97 Date

B.L.M. - I.D. 00363100 D.N.R. USE ONLY

SEND TO: Department of Environmental Protection Bureau of Survey and Mapping 3900 Commonwealth Boulevard Mail Station 105 Tallahassee, Florida 32399