

4024703

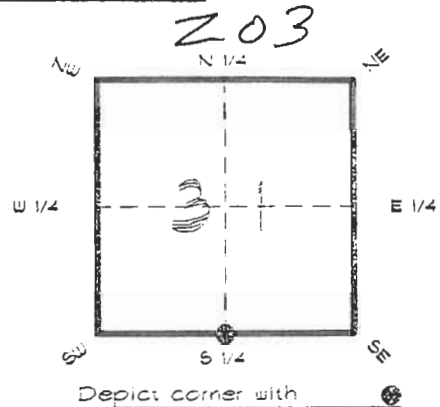
DOC. #

051084

FLORIDA DEPARTMENT OF ENVIRONMENTAL PROTECTION
CERTIFIED CORNER RECORD

CORNER DESCRIPTION:

S. 1/4 corner of Section 31
Twp 40 S., Rge 24 E.
Tallahassee Base Meridian,
CHARLOTTE County(s), Florida.



MONUMENTATION DESCRIPTION:

Describe original monument and accessories, or subsequent restoration. Give sources of information. (If no attempt was made to search for the original monument and accessories, this information is not necessary.)

Description of corner evidence found:

80d NAIL 5" BELOW SURFACE, 800' NAIL FOUND 3.40' W'LY ON SURFACE

State method(s) to determine corner location (lost corners only):

RECEIVED
JAN 31 1995
SURVEY & MAPPING

HORIZONTAL POSITION INFORMATION (if determined):

Latitude 26°56'48.64081" N Longitude 81°56'54.46517" W

Y(Northing) 289515.665 m X(Easting) 205117.447 m Zone FLW

Convergence 0°01'24.078" Scale factor 0.99994150

Coordinate determination (circle one): Field traverse GPS

Horizontal datum (circle one): NAD27 NAD83(1986) NAD83(1990) other (explain)

Order of accuracy as defined in Standards and Specifications for Geodetic Control Networks, published by the Federal Geodetic Control Committee (circle one):
1st, 2nd, 3rd class

or Minimum Technical Standards (Chapter 6IG17, F.A.C.) ratio of closure for field data (example 1:10,000), _____ This does not specify an order of accuracy.

Control point(s) used for survey: CHARLOTTE COUNTY HORIZONTAL CONTROL NETWORK INCLUDES HAYOLINE 2, PLACIDA 2, W260, PUNTFORT, & FLGPS 58 49 B ORDER STATIONS.

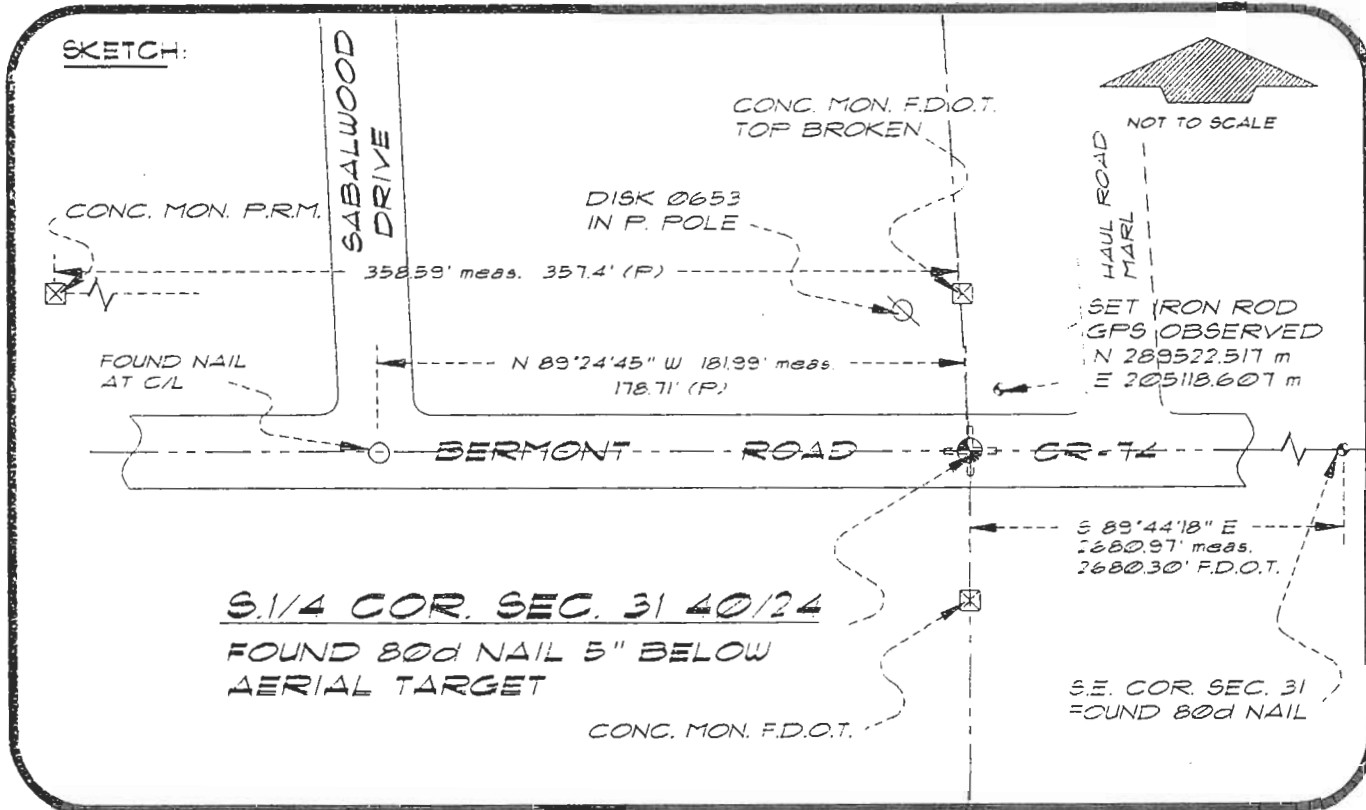
Comments:

OCCUPATION AND MONUMENTATION DETERMINE THE LOCATION OF THIS CORNER. THE POSITION HAS BEEN HELD BY OTHER SURVEYORS AND F.D.O.T.. THE POSITION IS 100'+/- EASTERLY OF A PROPORTIONED LOCATION.

4024703

DOC. #

051084



BASIS OF BEARING SOLAR OBSERVATION REFER: F3 301/56

REFERENCE MEASUREMENTS

Description	Bearing	Distance
CONC. MON. F.D.O.T.	N 00°44'52" W	49.61'
CONC. MON. F.D.O.T.	S 01°20'13" W	50.13'
DISK 0653 IN P. POLE	N 05°59'23" W	47.89'
SET GPS REF. IRON ROD	N 09°38'14" E	52.80'
	(N 09°36'50" E	GRID)

SURVEYORS CERTIFICATE: I certify the monument and accessories indicated above were field located on JUNE 15, 1994

R. P. ROSSO

FLS 4260

UPDATED JAN. 11, 1995

SIGNATURE

1/30/95

DATE

CHARLOTTE COUNTY SURVEY DEPT.

FIRM OR AGENCY

1000 FLORIDA STREET

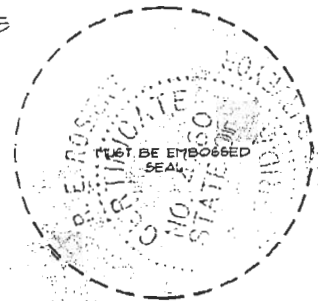
ADDRESS

PUNTA GORDA, FLORIDA 33950

CITY

STATE

508



Completeness checked by: B. Swinton

Accepted and filed: 3-1-95 Date

BLM. - I.D. 31CLOS00 D.E.P. USE ONLY

SEND TO:

Department of Environmental Protection
Bureau of Survey and Mapping
3500 Commonwealth Boulevard
Mail Station 105
Tallahassee, Florida 32399